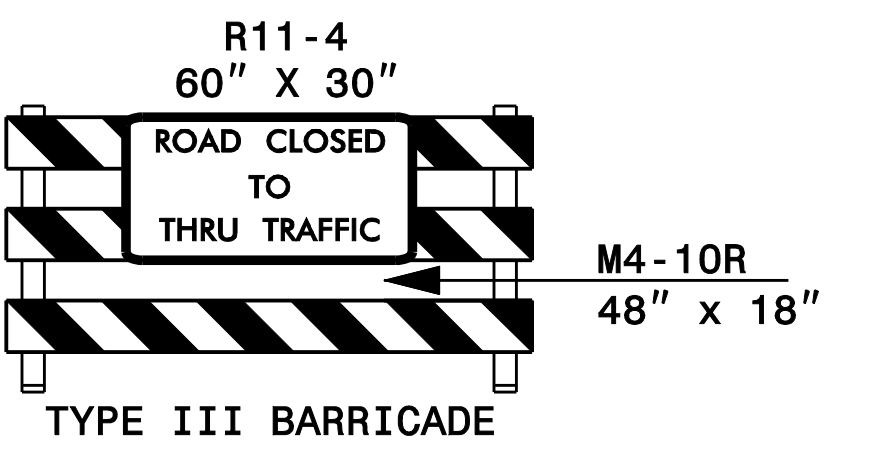


1

MESSAGE NO. 1 ROAD CLOSED AHEAD	MESSAGE NO. 2 FOLLOW DETOUR
------------------------------------	--------------------------------

CHANGEABLE MESSAGE SIGN

2



DETOUR ROUTE FOR WORK ITEMS REQUIRING CLOSURE OF -Y26-

PLAN PREPARED IN THE OFFICE OF:
PROGRESSIVE DESIGN GROUP, INC.
ENGINEERS • CONSULTANTS

APPROVED: *John Gray* DATE: 3/9/2017

SEAL

**TRANSPORTATION
MANAGEMENT PLAN
OFF SITE DETOUR ROUTES**