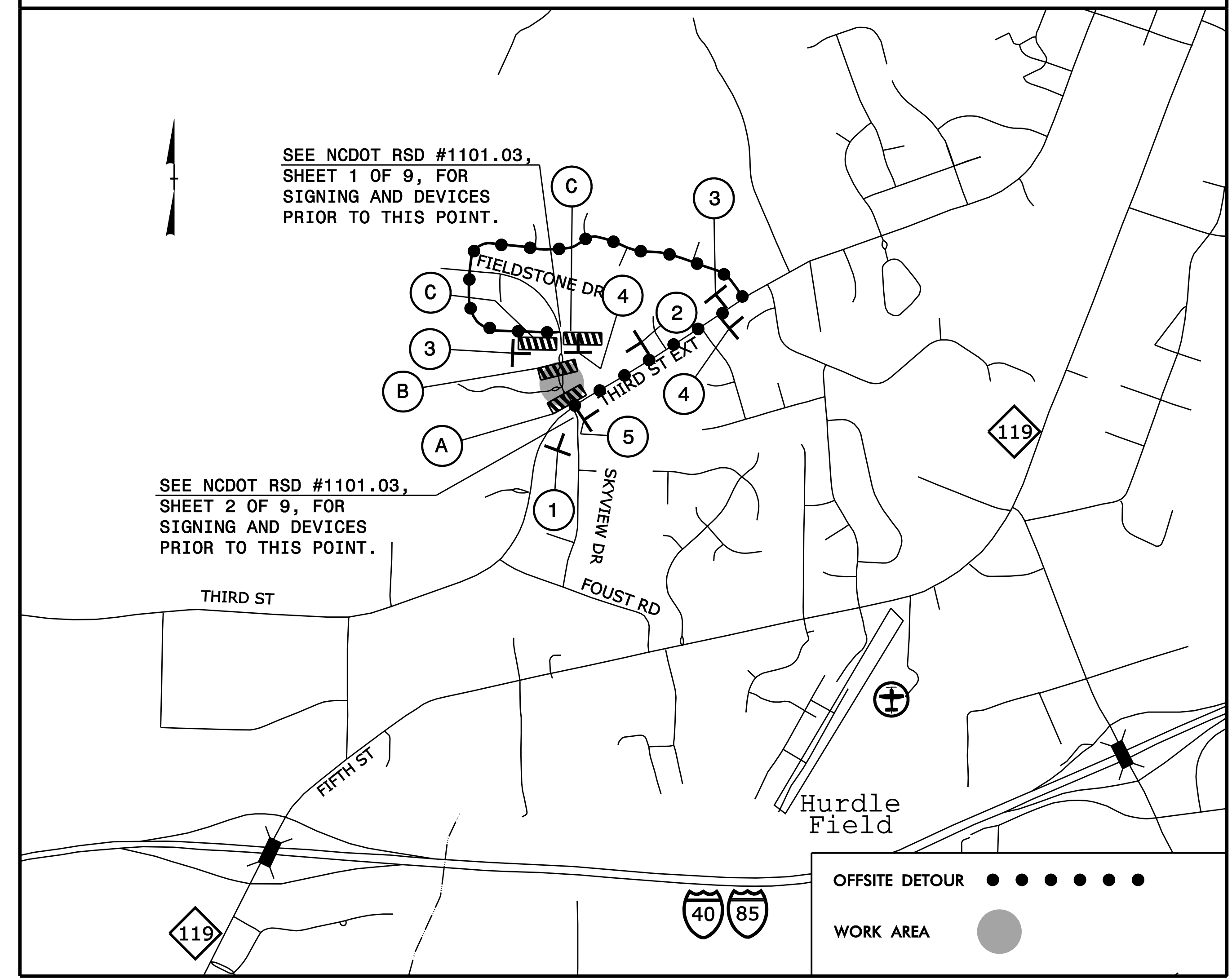
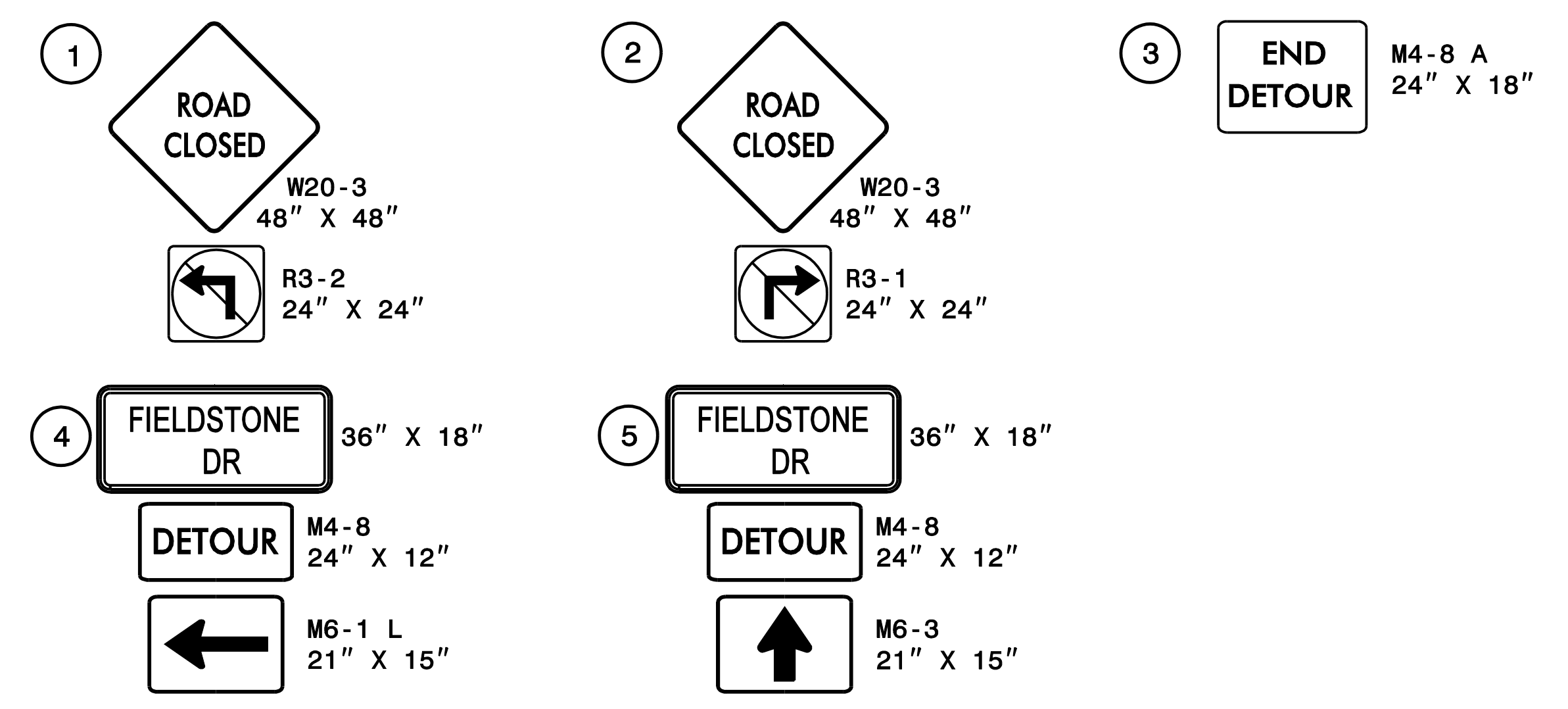


-Y9- (FIELDSTONE DR) CLOSURE AT -Y7B-



SEE NCDOT RSD #1101.03,
SHEET 1 OF 9, FOR
SIGNING AND DEVICES
PRIOR TO THIS POINT.

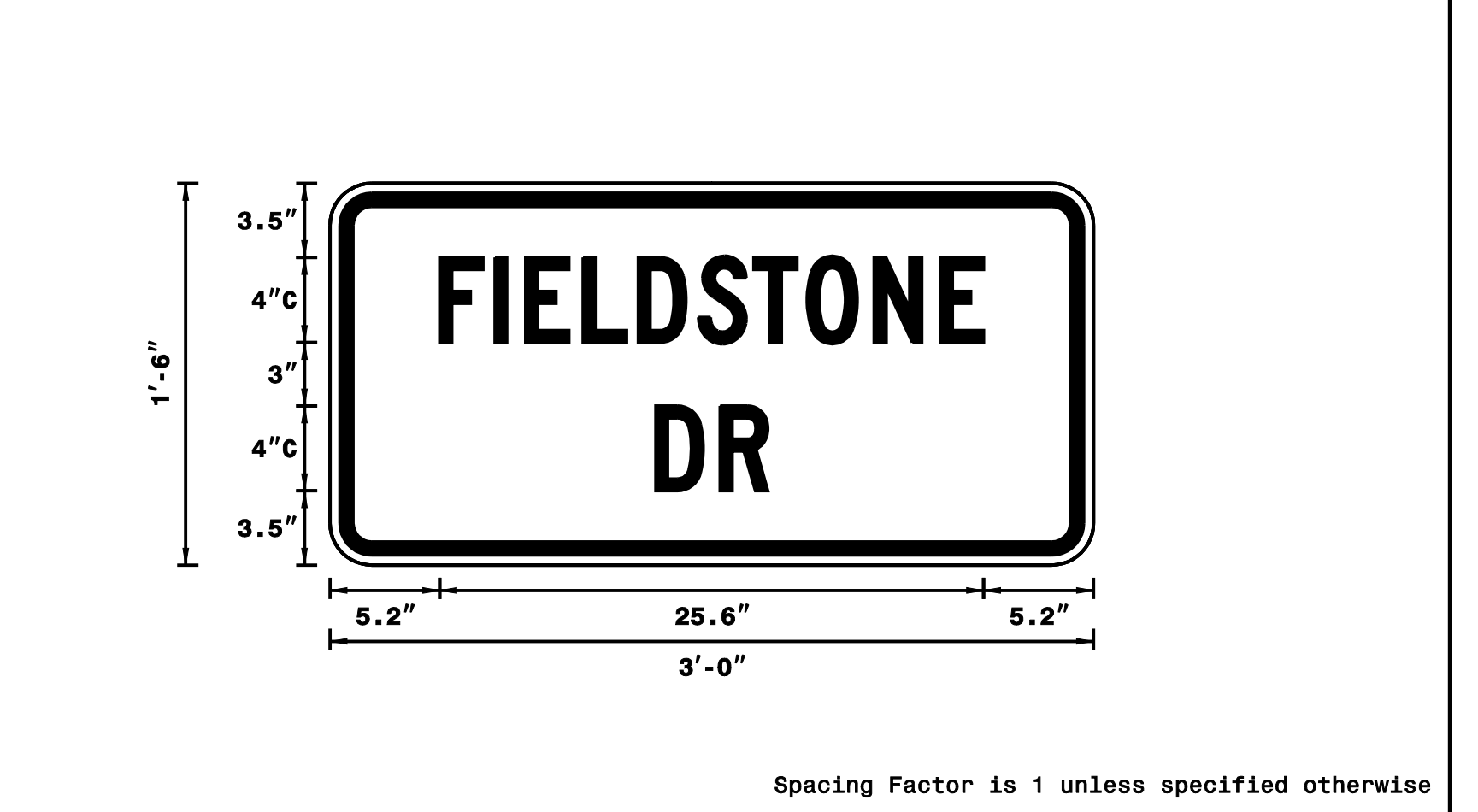
SEE NCDOT RSD #1101.03,
SHEET 2 OF 9, FOR
SIGNING AND DEVICES
PRIOR TO THIS POINT.



SIGN NUMBER: FIELDSTONE	BACKG COLOR: Fluorescent Orange	DESIGN BY: none	CHECKED BY:	DATE: Aug 12, 2016
TYPE: STATIONARY	COPY COLOR: Black	PROJECT ID: ID	DIV: DIV	
QUANTITY: SEE PLANS				

SYMBOL	X	Y	WID	HT

MAT'L: 0.080" (2.0 mm) ALUMINUM



USE NOTES: 1,2

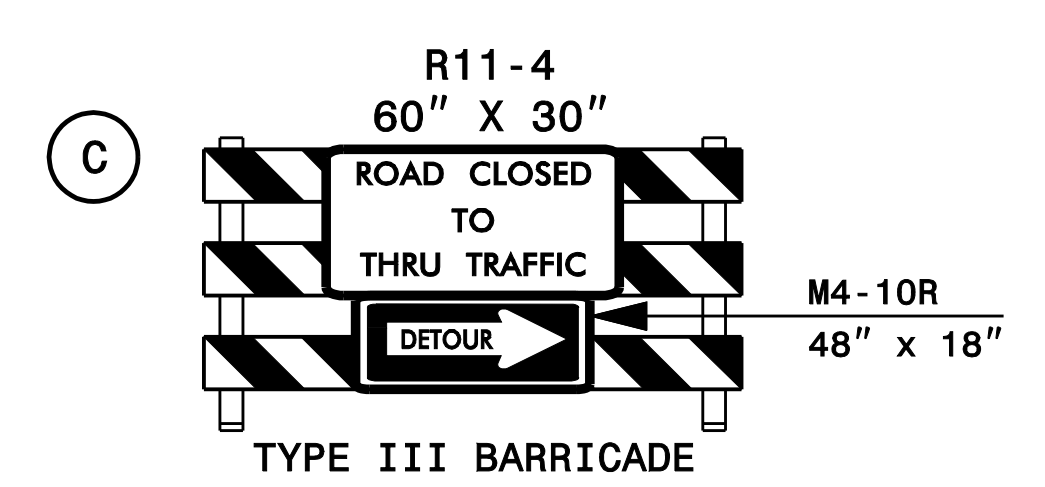
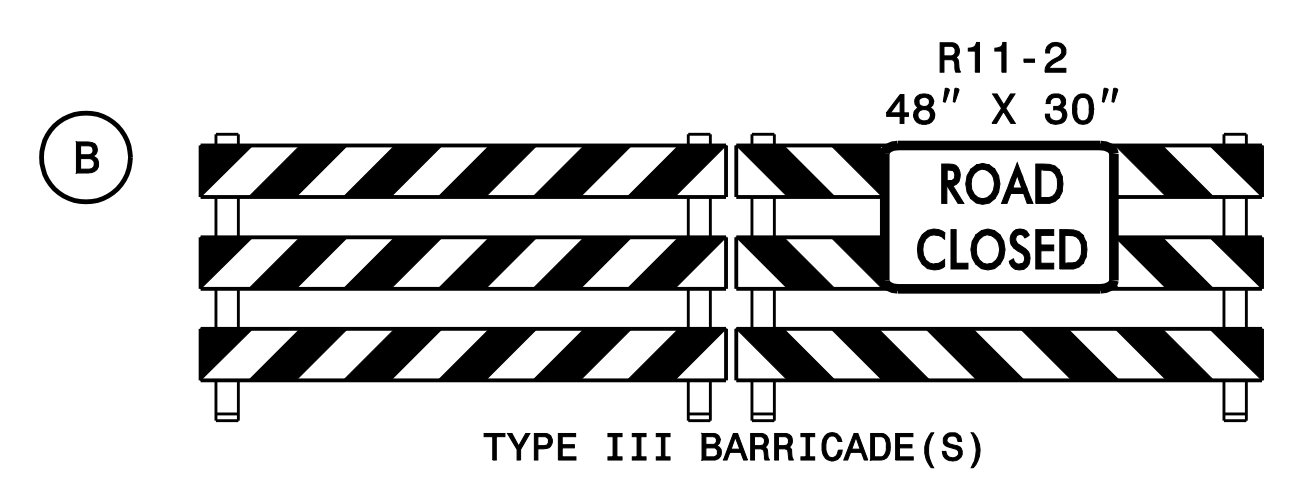
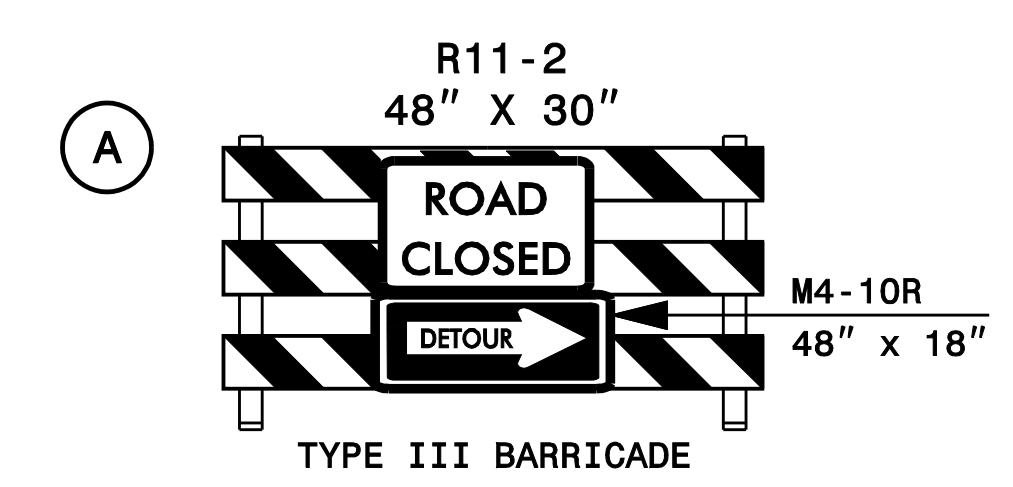
- Legend and border shall be direct applied black non-reflective sheeting.
- Background shall be NC GRADE B fluorescent orange retroreflective sheeting.

LETTER POSITIONS

Letter spacings are to start of next letter

	F	I	E	L	D	S	T	O	N	E		Series/Size Text Length	
	5.2	2.6	1.4	2.7	2.6	2.8	2.6	2.5	3.2	3.1	2	5.2	C 2000 25.6
		D	R										C 2000 5.3
	15.4	3	2.2	15.4									

NORTH CAROLINA D.O.T. SIGN DETAIL



DETOUR ROUTE FOR WORK ITEMS
REQUIRING CLOSURE OF -Y9-

PLAN PREPARED IN THE OFFICE OF: PROGRESSIVE DESIGN GROUP, INC. ENGINEERS • CONSULTANTS	APPROVED: <i>John Day</i> DATE: 3/9/2017	DIVISION OF HIGHWAYS STATE OF NORTH CAROLINA DEPARTMENT OF TRANSPORTATION WORK ZONE TRAFFIC CONTROL	TRANSPORTATION MANAGEMENT PLAN OFF SITE DETOUR ROUTES
	SEAL 		