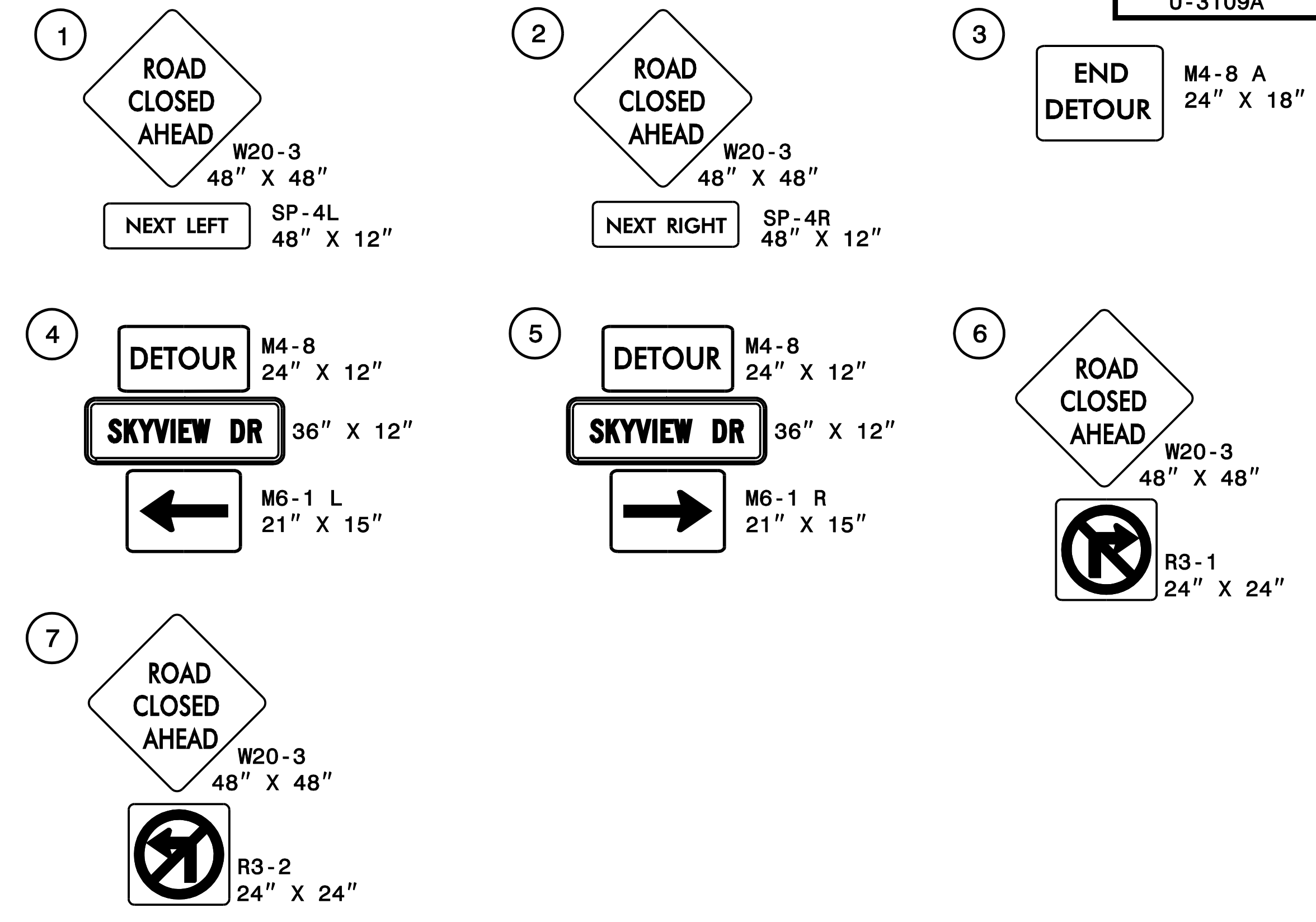
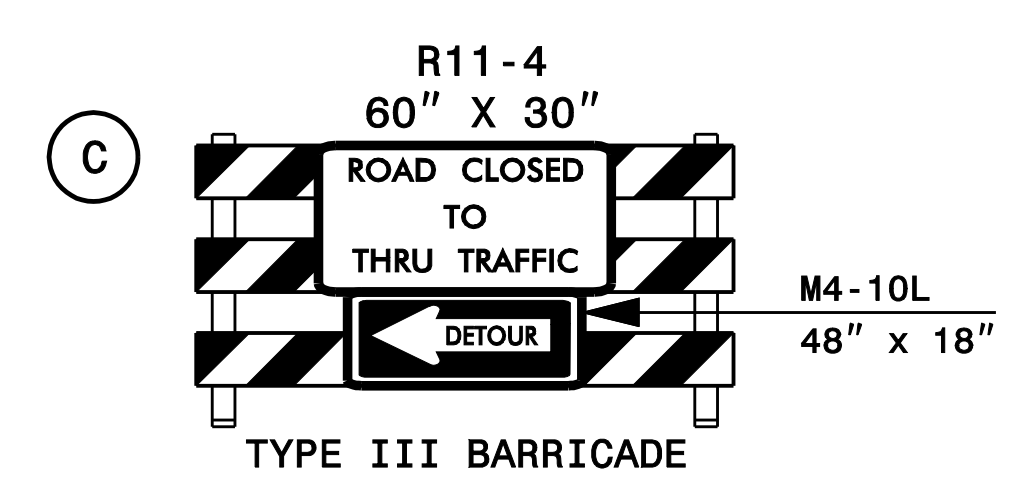
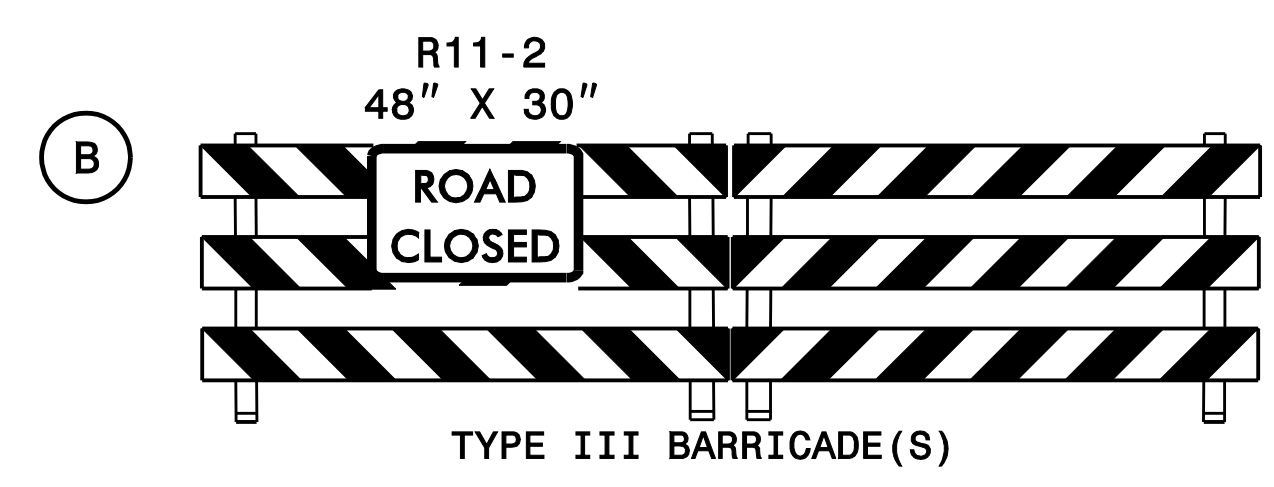
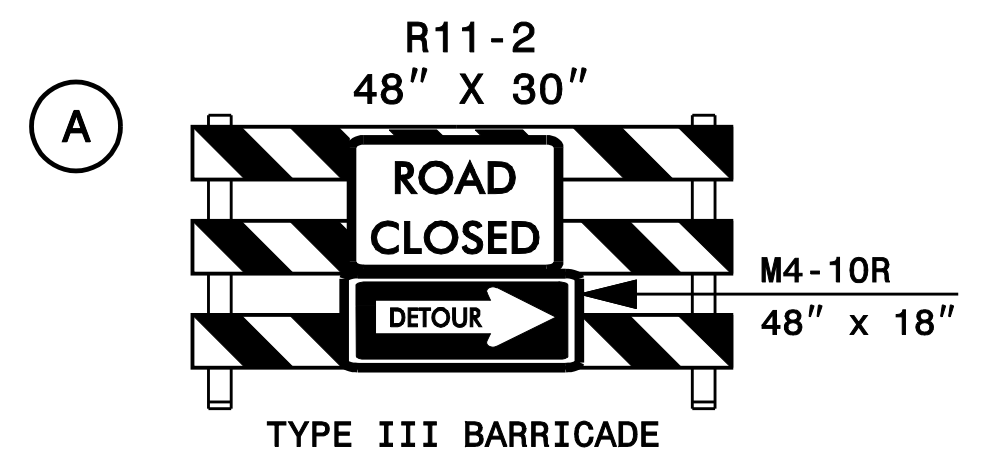


SEE NCDOT RSD #1101.03, SHEET 2 OF 9, FOR SIGNING AND DEVICES PRIOR TO THIS POINT.

SEE NCDOT RSD #1101.03, SHEET 1 OF 9, FOR SIGNING AND DEVICES PRIOR TO THIS POINT.



SIGN NUMBER: D		BACKG COLOR: Fluorescent Orange	DESIGN BY: LA	CHECKED BY: SK	DATE: Feb 02, 2016
TYPE: D		COPY COLOR: Black	PROJECT ID: U-3109A	DIV: DIV 7	
QUANTITY: SEE PLANS	SYMBOL				
SIGN WIDTH: 3'-0"	X	Y	WID	HT	
HEIGHT: 1'-0"					
TOTAL AREA: 3.0 Sq.Ft.					
BORDER TYPE: INSET	MAT'L: 0.080" (2.0 mm) ALUMINUM				
RECESS: 0.47"					
WIDTH: 0.47"					
RADII: 1.97"					
NO. Z BARS: NA					
LENGTH: NA					

USE NOTES: 1,2

- Legend and border shall be direct applied black non-reflective sheeting.
- Background shall be NC GRADE B fluorescent orange retroreflective sheeting.

BORDER
R=1.97"
TH=0.47"
IN=0.47"

Spacing Factor is 1 unless specified otherwise

Letter locations are panel edge to lower left corner											Series/Size
S	K	Y	V	I	E	W	D	R			Text Length
4.2	7.2	9.8	12.6	15.6	17	19.4	22.5	26.5	29.5		C 2000
											27.5

FILENAME: SIGN DESIGN NORTH CAROLINA D.O.T. SIGN DETAIL

DETOUR ROUTE FOR WORK ITEMS REQUIRING CLOSURE OF -Y8-

PLAN PREPARED IN THE OFFICE OF: PROGRESSIVE DESIGN GROUP, INC. ENGINEERS • CONSULTANTS	APPROVED: <i>[Signature]</i> DATE: 3/9/2017 SEAL 		TRANSPORTATION MANAGEMENT PLAN OFF SITE DETOUR ROUTES
---	---	--	--