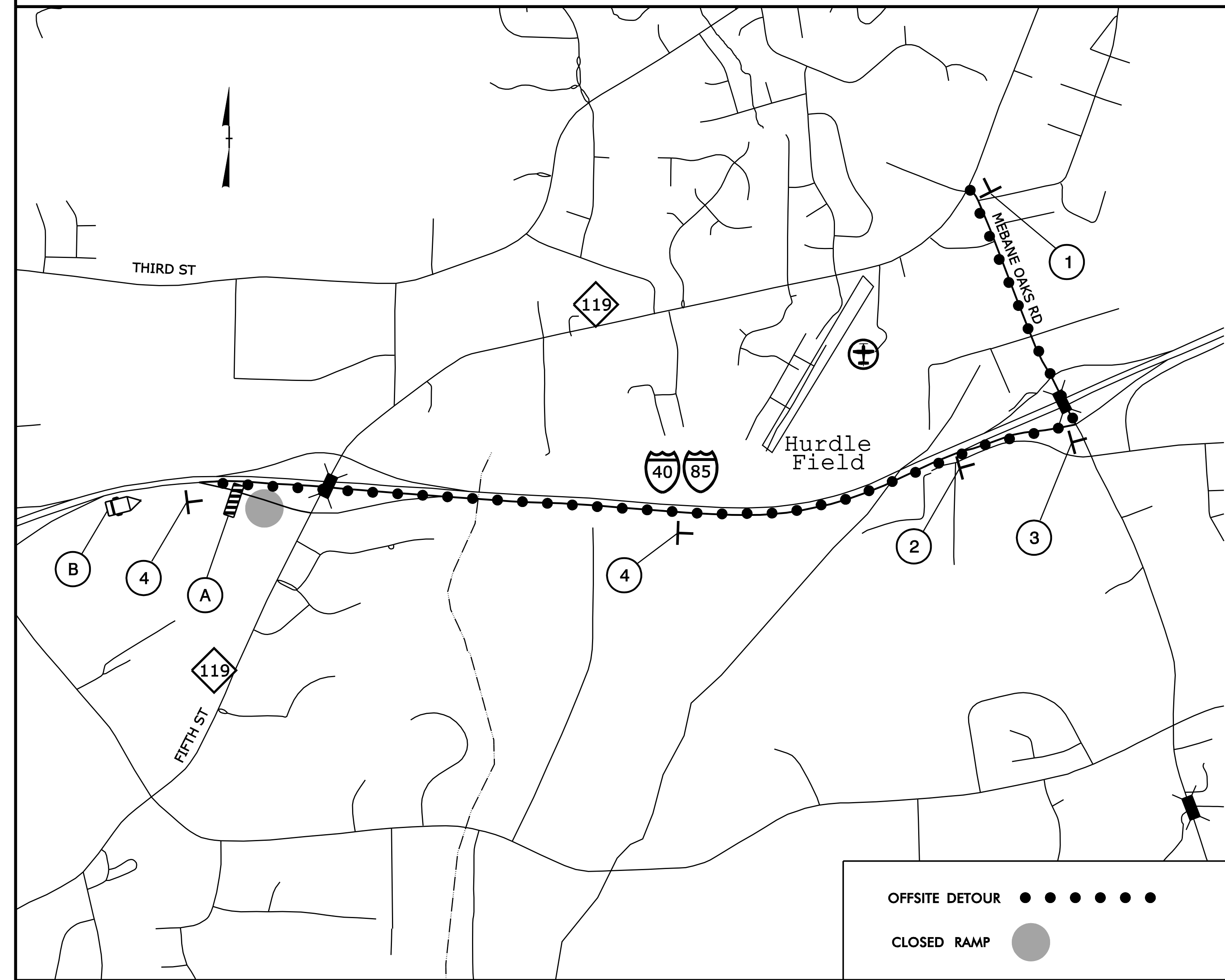


-RPC- CLOSURE / DETOUR TO NC 119 (FIFTH ST)

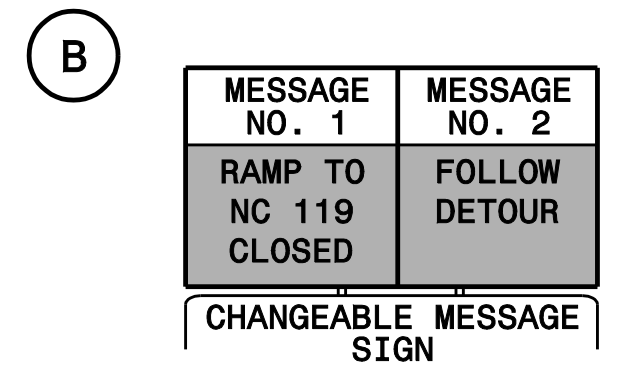
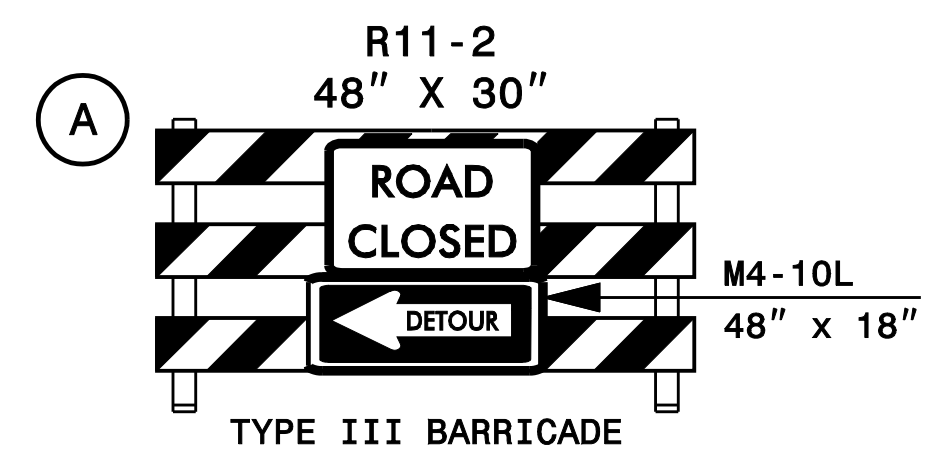


① **END DETOUR** M4-8 A
24" X 18"

② **DETOUR** M4-8
24" X 12"
TO M4-5
24" X 12"
119 M1-5
24" X 24"
 M6-2
21" X 15"

③ **DETOUR** M4-8
24" X 12"
TO M4-5
24" X 12"
119 M1-5
24" X 24"
 M6-1 L
21" X 15"

④ **DETOUR** M4-8
24" X 12"
TO M4-5
24" X 12"
119 M1-5
24" X 24"
 M6-3
21" X 15"



DETOUR ROUTE FOR WORK ITEMS REQUIRING CLOSURE OF -RPC-

PLAN PREPARED IN THE OFFICE OF:
PROGRESSIVE DESIGN GROUP, INC.
ENGINEERS • CONSULTANTS

APPROVED: *Tommy* DATE: 3/9/2017
SEAL
NORTH CAROLINA PROFESSIONAL ENGINEER SEAL 025465



**TRANSPORTATION MANAGEMENT PLAN
OFF SITE DETOUR ROUTES**