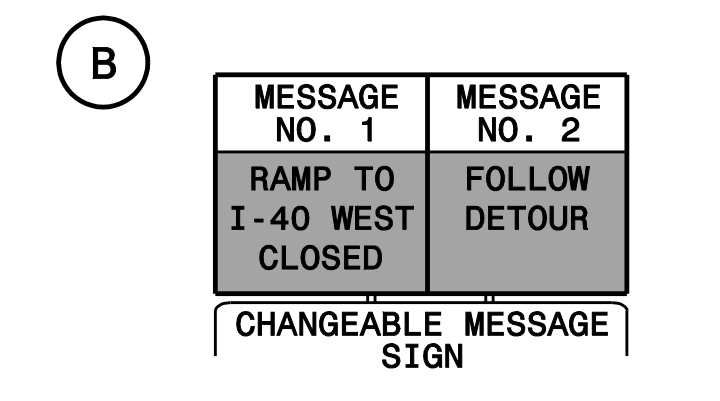
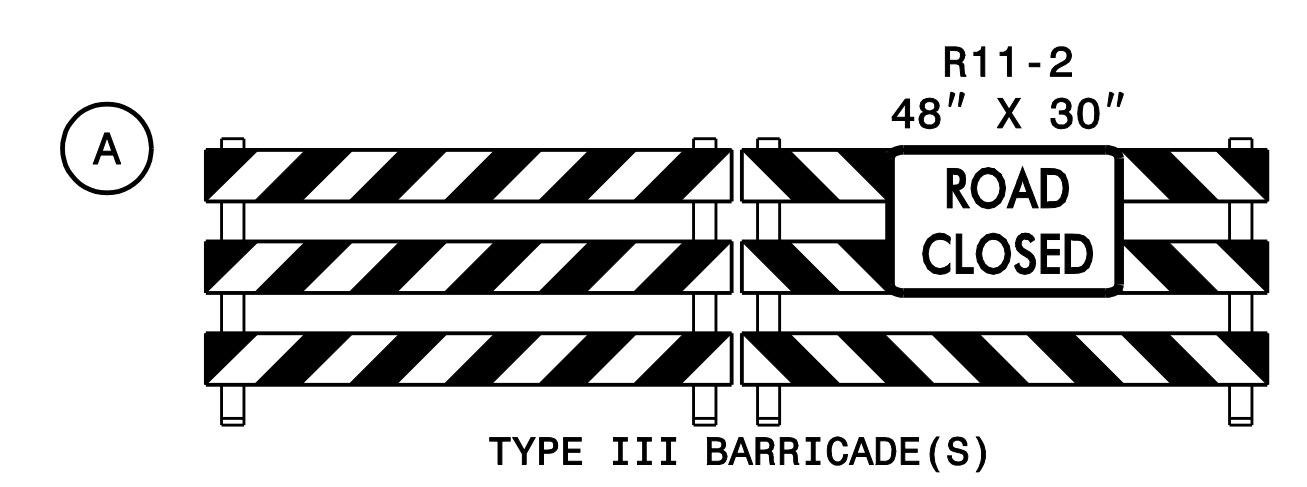
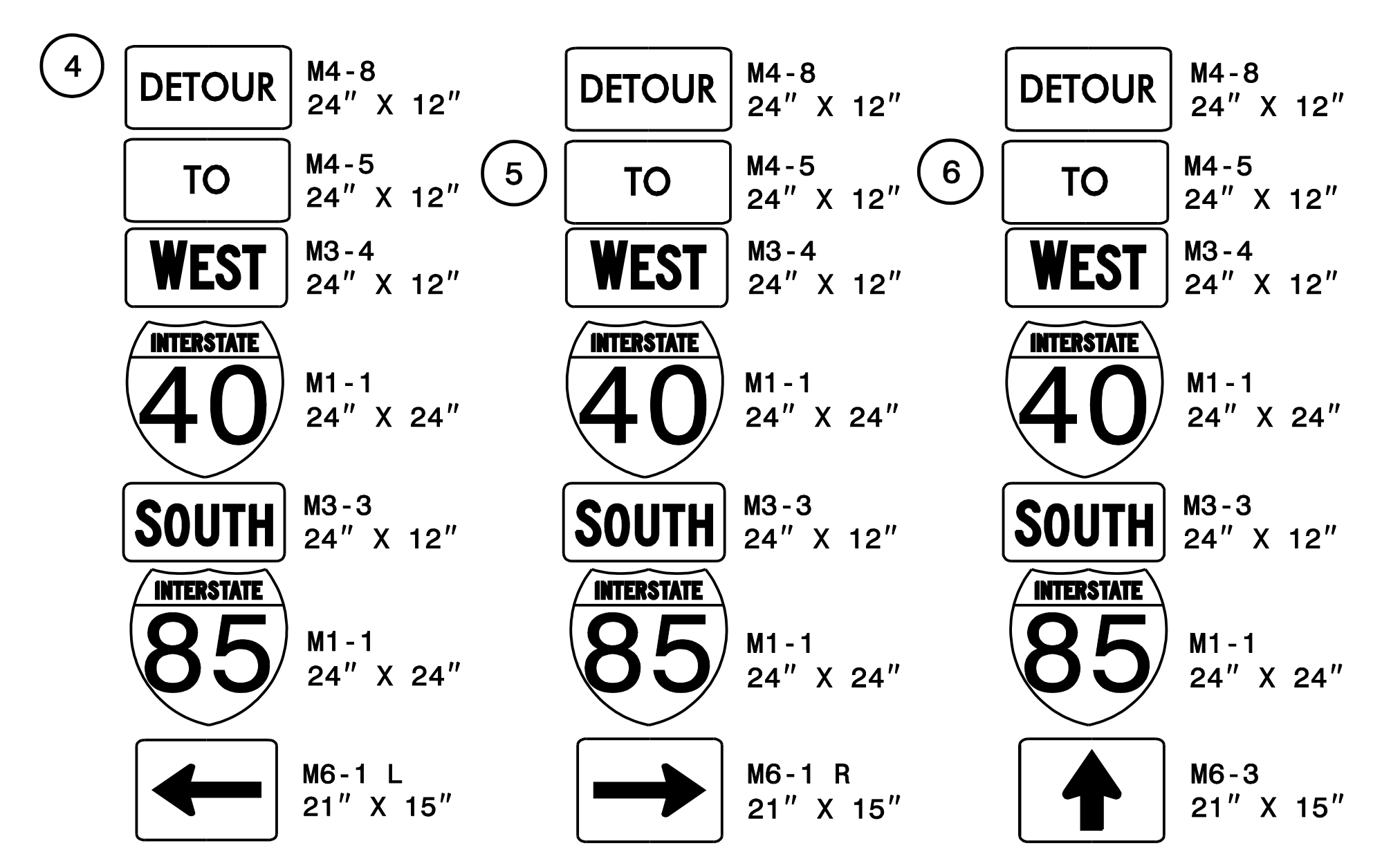
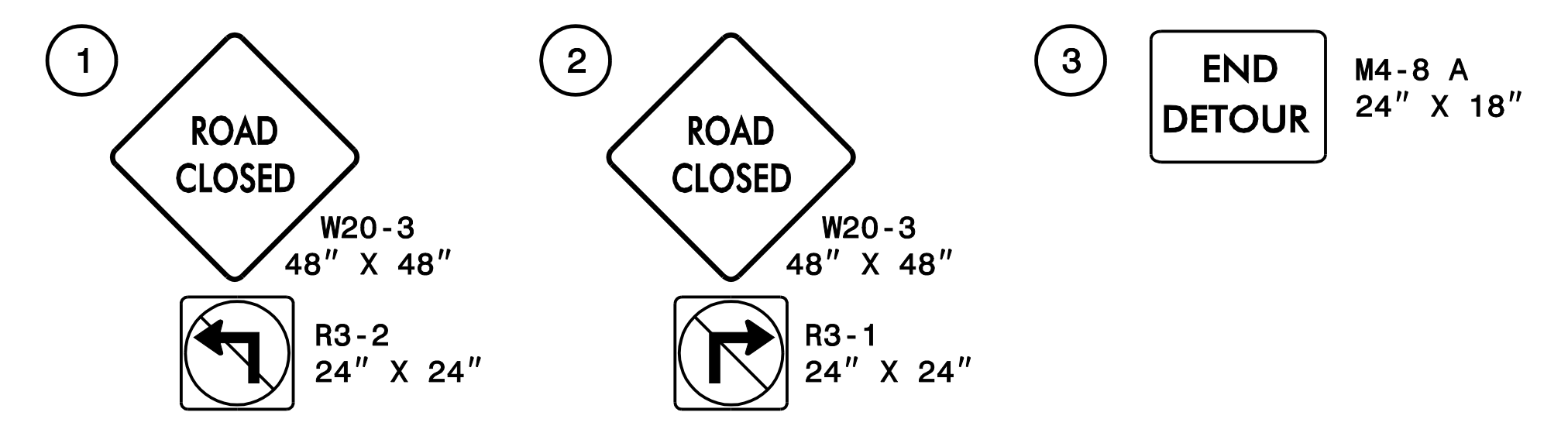
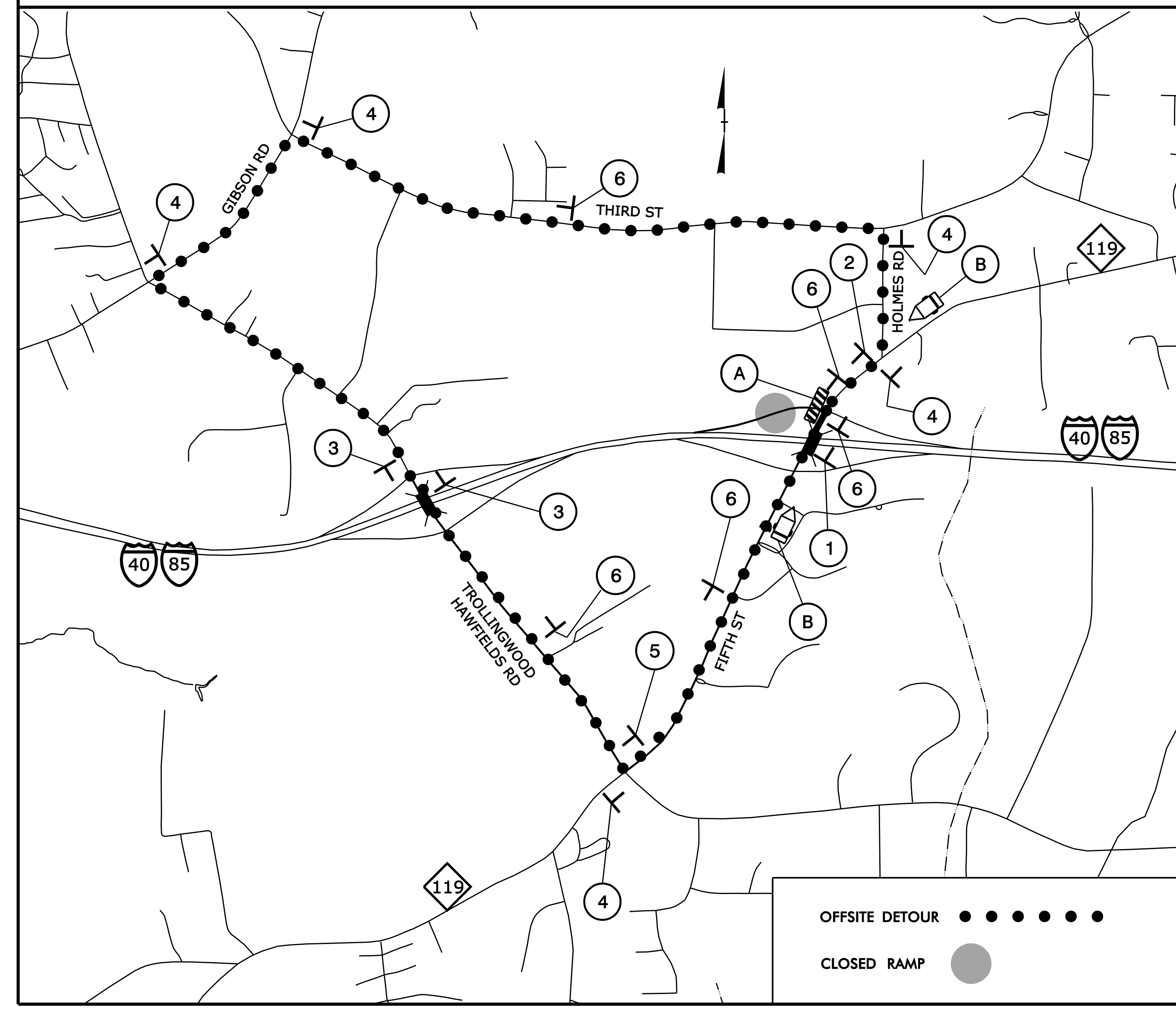


**-RPB- CLOSURE / DETOUR TO I-40 WEST/I-85 SOUTH**



DETOUR ROUTE FOR WORK ITEMS REQUIRING CLOSURE OF -RPB-

PLAN PREPARED IN THE OFFICE OF: <b>PROGRESSIVE DESIGN GROUP, INC.</b>  ENGINEERS • CONSULTANTS	APPROVED: <i>John Gray</i> DATE: 3/9/2017			<b>TRANSPORTATION MANAGEMENT PLAN</b> <b>OFF SITE DETOUR ROUTES</b>
	SEAL			