

5/28/17

DOCUMENT NOT CONSIDERED FINAL
UNLESS ALL SIGNATURES COMPLETED

PROJECT REFERENCE NO. U-3109A SHEET NO. 38

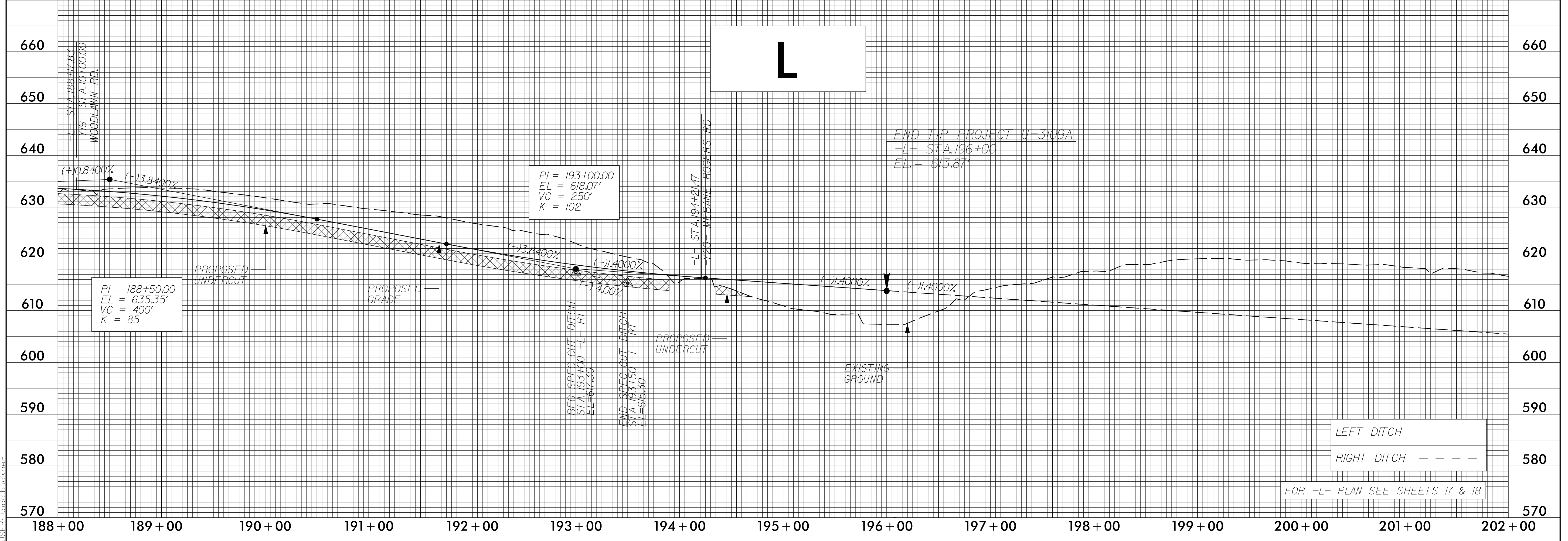
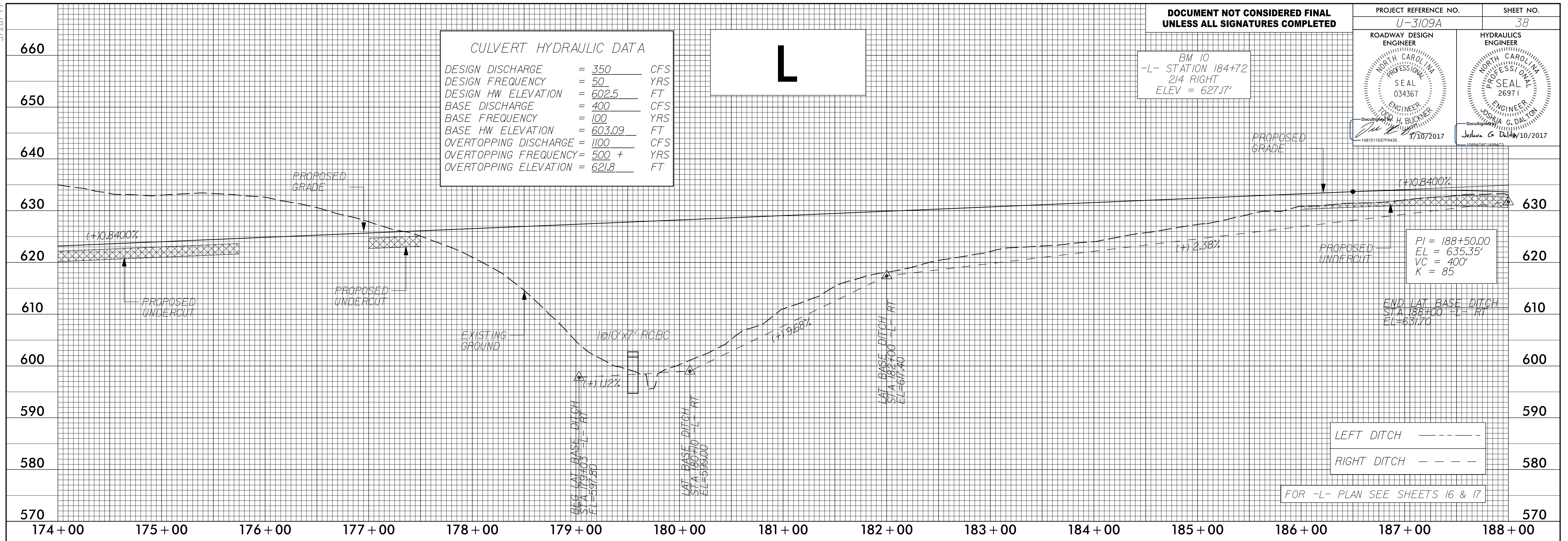
ROADWAY DESIGN ENGINEER
NORTH CAROLINA PROFESSIONAL SEAL
034367
JOSHUA G. DALTON
5/10/2017

HYDRAULICS ENGINEER
NORTH CAROLINA PROFESSIONAL SEAL
26971
JOSHUA G. DALTON
5/10/2017

CULVERT HYDRAULIC DATA

DESIGN DISCHARGE	= 350	CFS
DESIGN FREQUENCY	= 50	YRS
DESIGN HW ELEVATION	= 602.5	FT
BASE DISCHARGE	= 400	CFS
BASE FREQUENCY	= 100	YRS
BASE HW ELEVATION	= 603.09	FT
OVERTOPPING DISCHARGE	= 1100	CFS
OVERTOPPING FREQUENCY	= 500 +	YRS
OVERTOPPING ELEVATION	= 621.8	FT

BM 10
-L- STATION 184+72
214 RIGHT
ELEV = 627.7'



5/24/2017 11:40 AM V:\109A_Rdy_PFL_L_sheets.dgn
JSE:agood/buckner