

5/28/99

DOCUMENT NOT CONSIDERED FINAL  
UNLESS ALL SIGNATURES COMPLETED

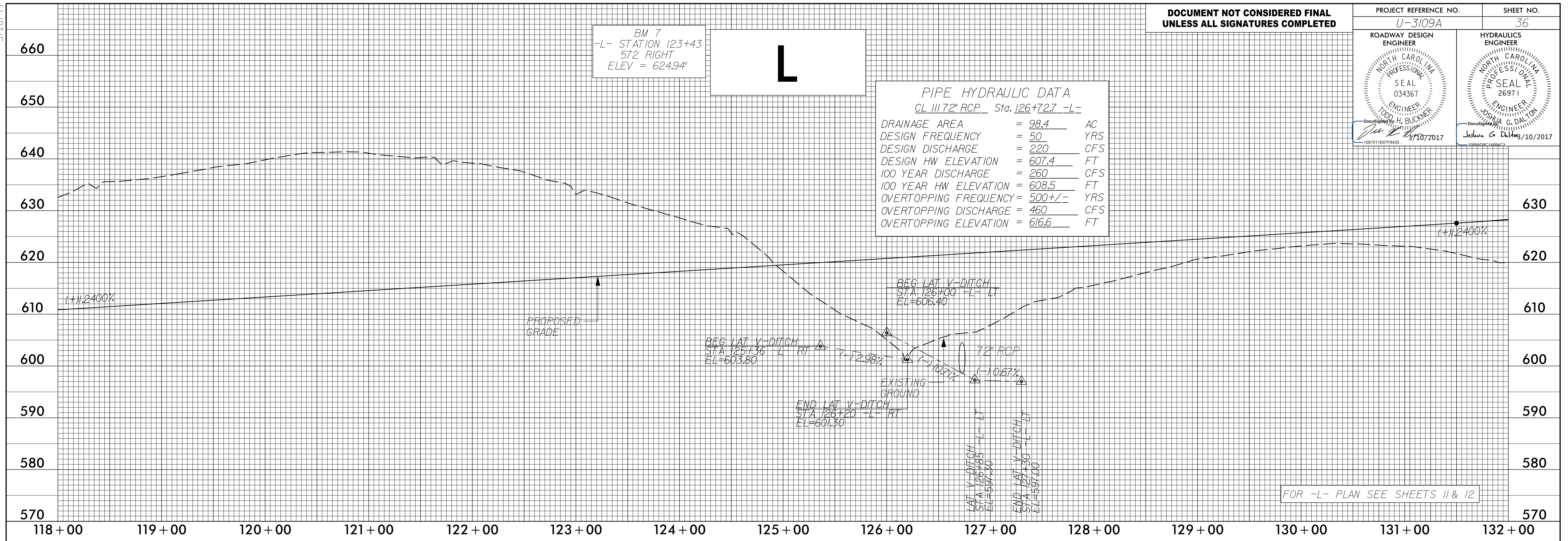
PROJECT REFERENCE NO. U-3109A	SHEET NO. 36
ROADWAY DESIGN ENGINEER NORTH CAROLINA PROFESSIONAL SEAL 034367 TODD H. BUCKNER 10/10/2017	HYDRAULICS ENGINEER NORTH CAROLINA PROFESSIONAL SEAL 26971 JOSHUA G. DALTON 10/10/2017

BM 7  
-L- STATION 123+43  
572 RIGHT  
ELEV = 624.94'

L

PIPE HYDRAULIC DATA  
CL III 72" RCP Sta. 126+72.7 -L-

DRAINAGE AREA	= 98.4	AC
DESIGN FREQUENCY	= 50	YRS
DESIGN DISCHARGE	= 220	CFS
DESIGN HW ELEVATION	= 607.4	FT
100 YEAR DISCHARGE	= 260	CFS
100 YEAR HW ELEVATION	= 608.5	FT
OVERTOPPING FREQUENCY	= 500+/-	YRS
OVERTOPPING DISCHARGE	= 460	CFS
OVERTOPPING ELEVATION	= 616.6	FT



FOR -L- PLAN SEE SHEETS 11 & 12

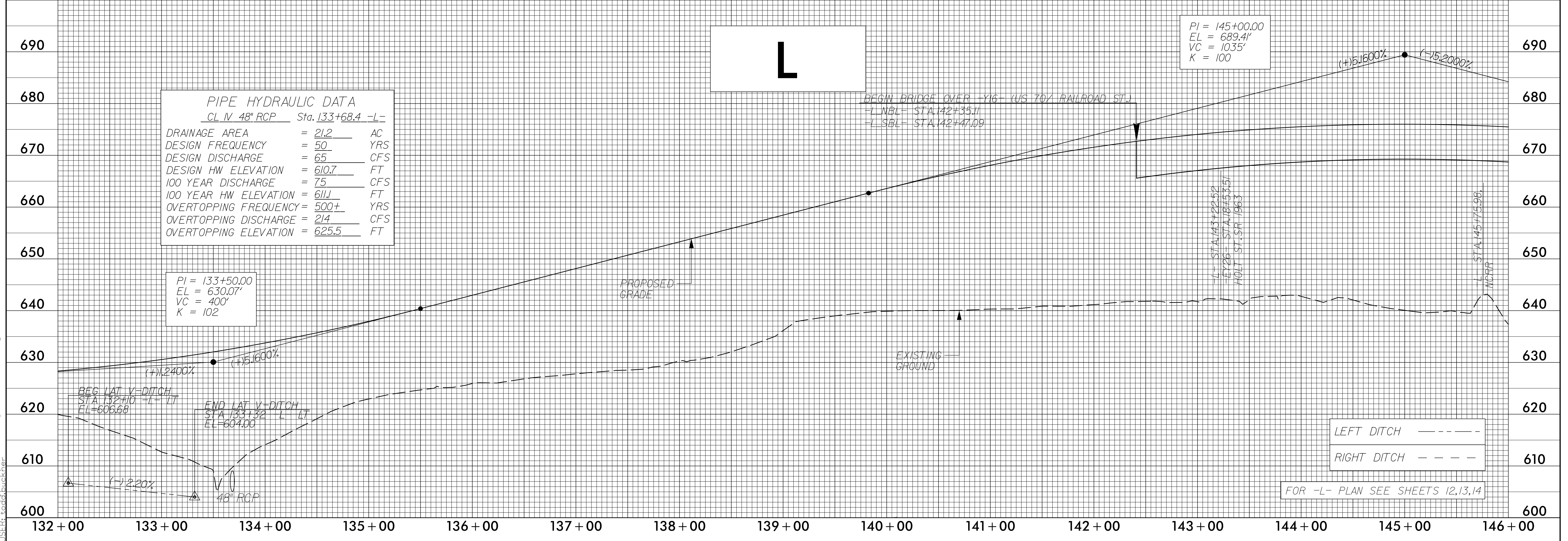
L

PIPE HYDRAULIC DATA  
CL IV 48" RCP Sta. 133+68.4 -L-

DRAINAGE AREA	= 21.2	AC
DESIGN FREQUENCY	= 50	YRS
DESIGN DISCHARGE	= 65	CFS
DESIGN HW ELEVATION	= 610.7	FT
100 YEAR DISCHARGE	= 75	CFS
100 YEAR HW ELEVATION	= 611	FT
OVERTOPPING FREQUENCY	= 500+	YRS
OVERTOPPING DISCHARGE	= 214	CFS
OVERTOPPING ELEVATION	= 625.5	FT

PI = 145+00.00  
EL = 689.41'  
VC = 1035'  
K = 100

PI = 133+50.00  
EL = 630.07'  
VC = 400'  
K = 102



FOR -L- PLAN SEE SHEETS 12,13,14

2/14/2017 11:52 PM U:\3109A\_Rdy\_PFL\_L\_sheets.dgn  
USER: todd.buckner