

5/28/19

DOCUMENT NOT CONSIDERED FINAL
UNLESS ALL SIGNATURES COMPLETED

PROJECT REFERENCE NO. U-3109A	SHEET NO. 35
ROADWAY DESIGN ENGINEER NORTH CAROLINA PROFESSIONAL SEAL 034367 J. BUCKNER	HYDRAULICS ENGINEER NORTH CAROLINA PROFESSIONAL SEAL 26971 J. DALTON
3/10/2017	3/10/2017

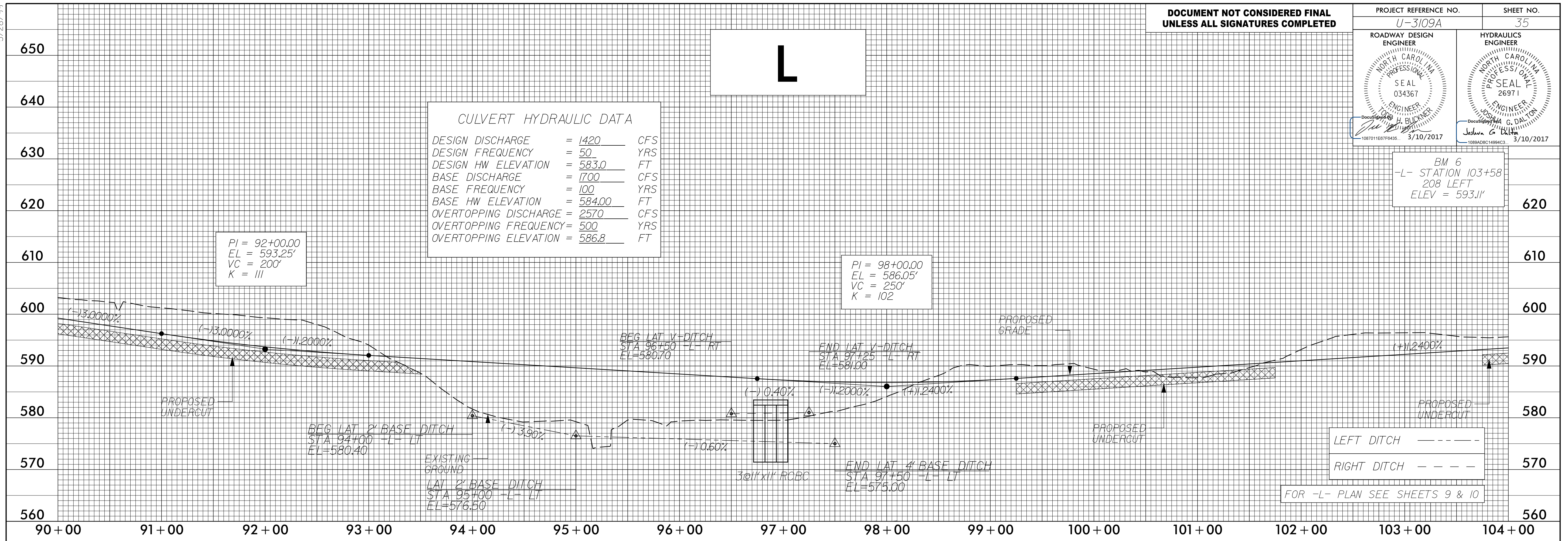
BM 6
-L- STATION 103+58
208 LEFT
ELEV = 593.11'

CULVERT HYDRAULIC DATA

DESIGN DISCHARGE	= 1420	CFS
DESIGN FREQUENCY	= 50	YRS
DESIGN HW ELEVATION	= 583.0	FT
BASE DISCHARGE	= 1700	CFS
BASE FREQUENCY	= 100	YRS
BASE HW ELEVATION	= 584.00	FT
OVERTOPPING DISCHARGE	= 2570	CFS
OVERTOPPING FREQUENCY	= 500	YRS
OVERTOPPING ELEVATION	= 586.8	FT

PI = 92+00.00
EL = 593.25'
VC = 200'
K = 111

PI = 98+00.00
EL = 586.05'
VC = 250'
K = 102



LEFT DITCH - - - -
RIGHT DITCH - - - -
FOR -L- PLAN SEE SHEETS 9 & 10

3/24/2017 11:16:33 PM U:\3109A_Rdy_PFL_L_sheets.dgn

L

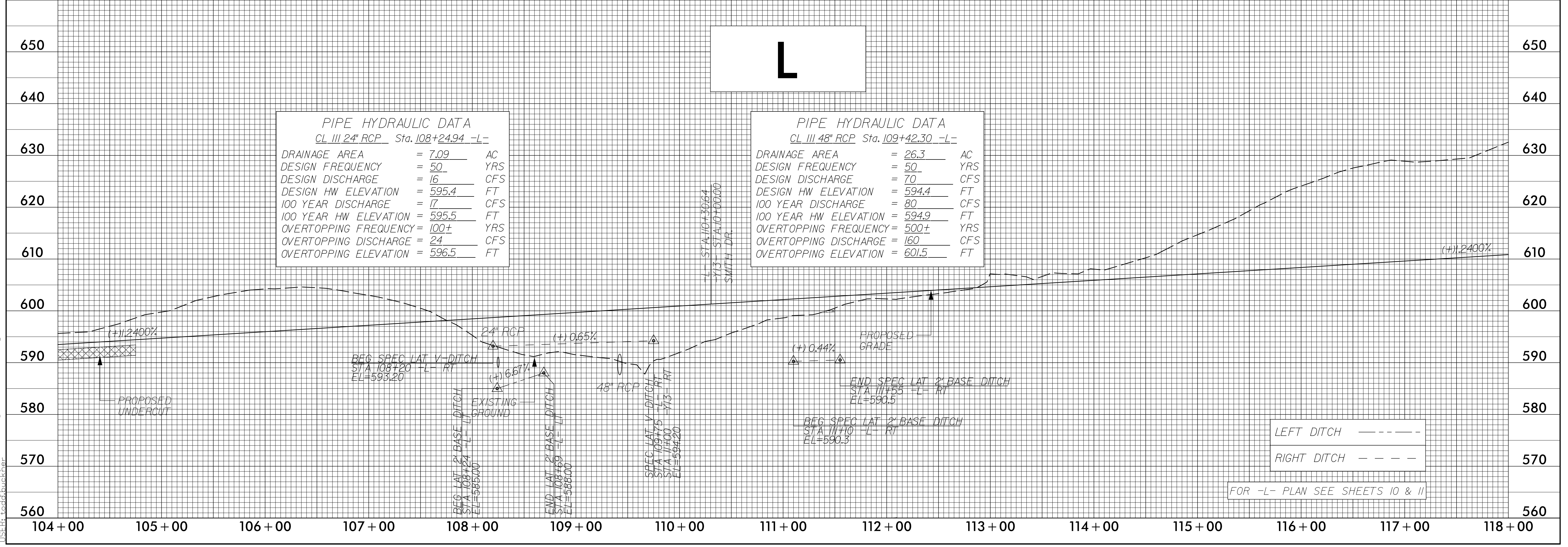
PIPE HYDRAULIC DATA
CL III 24" RCP Sta. 108+24.94 -L-

DRAINAGE AREA	= 7.09	AC
DESIGN FREQUENCY	= 50	YRS
DESIGN DISCHARGE	= 16	CFS
DESIGN HW ELEVATION	= 595.4	FT
100 YEAR DISCHARGE	= 17	CFS
100 YEAR HW ELEVATION	= 595.5	FT
OVERTOPPING FREQUENCY	= 100±	YRS
OVERTOPPING DISCHARGE	= 24	CFS
OVERTOPPING ELEVATION	= 596.5	FT

PIPE HYDRAULIC DATA
CL III 48" RCP Sta. 109+42.30 -L-

DRAINAGE AREA	= 26.3	AC
DESIGN FREQUENCY	= 50	YRS
DESIGN DISCHARGE	= 70	CFS
DESIGN HW ELEVATION	= 594.4	FT
100 YEAR DISCHARGE	= 80	CFS
100 YEAR HW ELEVATION	= 594.9	FT
OVERTOPPING FREQUENCY	= 500±	YRS
OVERTOPPING DISCHARGE	= 160	CFS
OVERTOPPING ELEVATION	= 601.5	FT

-L- STA 107+30.84
+Y13- STA 107+00.00
SMITH DR.



LEFT DITCH - - - -
RIGHT DITCH - - - -
FOR -L- PLAN SEE SHEETS 10 & 11