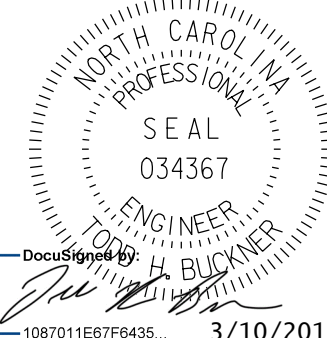
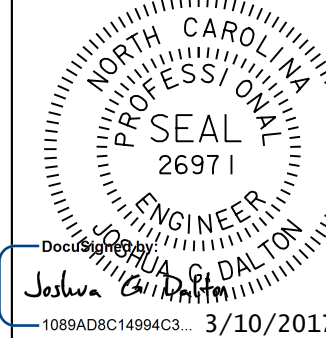
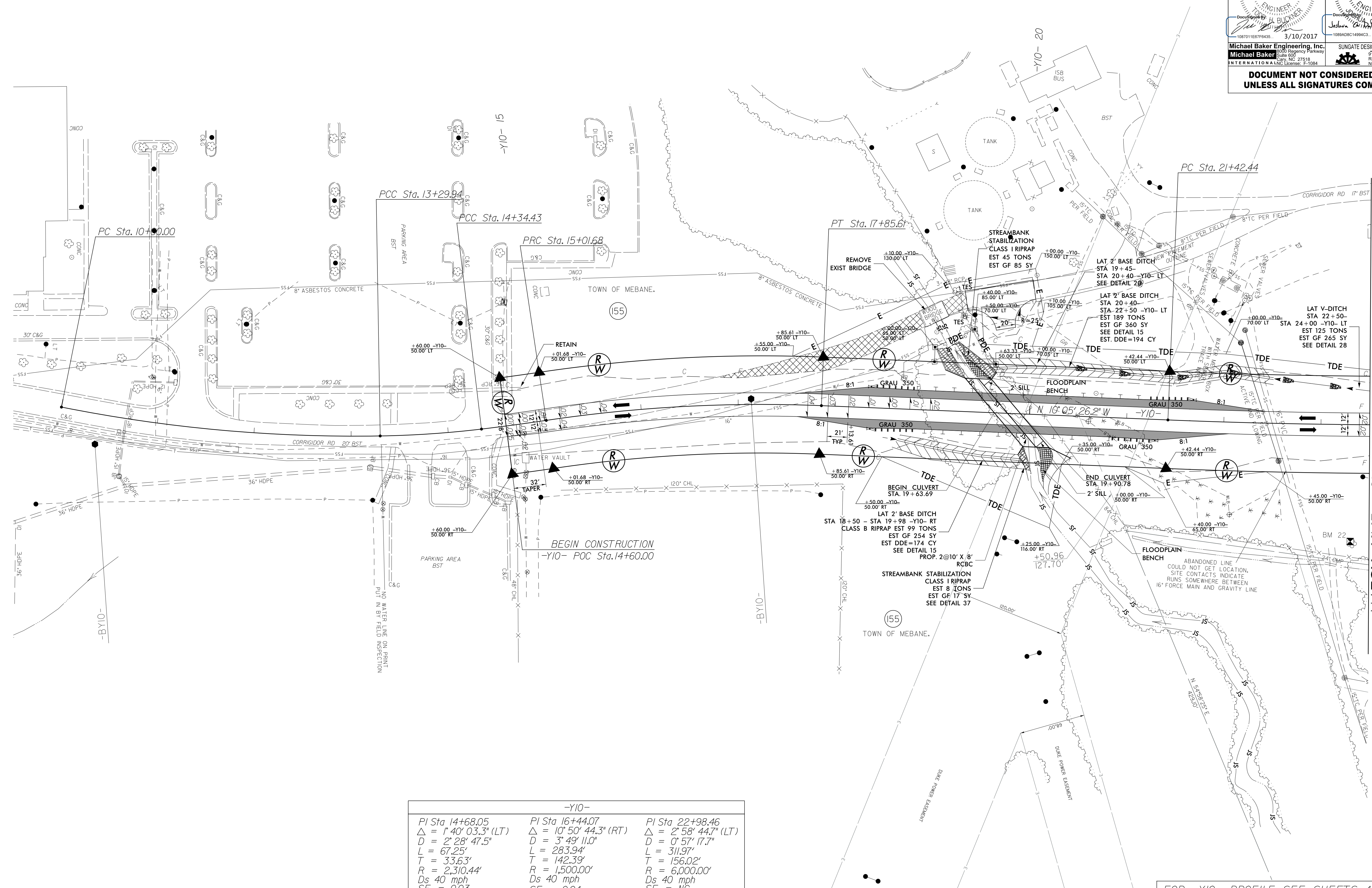


PROJECT REFERENCE NO. U-3109A		SHEET NO. 30	
RW SHEET NO.			
ROADWAY DESIGN ENGINEER		HYDRAULICS ENGINEER	
			
Michael Baker Engineering, Inc. 108701 EESTP8435 3/10/2017		SUNGATE DESIGN GROUP, P.A. 1088ADDC14994C3 3/10/2017	
DOCUMENT NOT CONSIDERED FINAL UNLESS ALL SIGNATURES COMPLETED			

REVISIONS



MATCH LINE - SHEET 31 -Y10- STATION 23+50

-Y10-		
PI Sta 14+68.05	PI Sta 16+44.07	PI Sta 22+98.46
$\Delta = 1^{\circ} 40' 03.3" (LT)$	$\Delta = 10^{\circ} 50' 44.3" (RT)$	$\Delta = 2^{\circ} 58' 44.7" (LT)$
$D = 2^{\circ} 28' 47.5"$	$D = 3^{\circ} 49' 11.0"$	$D = 0^{\circ} 57' 17.7"$
$L = 67.25'$	$L = 283.94'$	$L = 311.97'$
$T = 33.63'$	$T = 142.39'$	$T = 156.02'$
$R = 2,310.44'$	$R = 1,500.00'$	$R = 6,000.00'$
$Ds = 40 \text{ mph}$	$Ds = 40 \text{ mph}$	$Ds = 40 \text{ mph}$
$SE = 0.03$	$SE = 0.04$	$SE = NC$
	$RO = 84'$	

FOR -Y10- PROFILE SEE SHEETS 48 & 49
FOR CULVERT SEE SHEETS C-1 THRU C-16

2/24/2017 11:00:05 AM
USER: todd.buckler
FILE: U-109A_rdy_psh_30.dgn