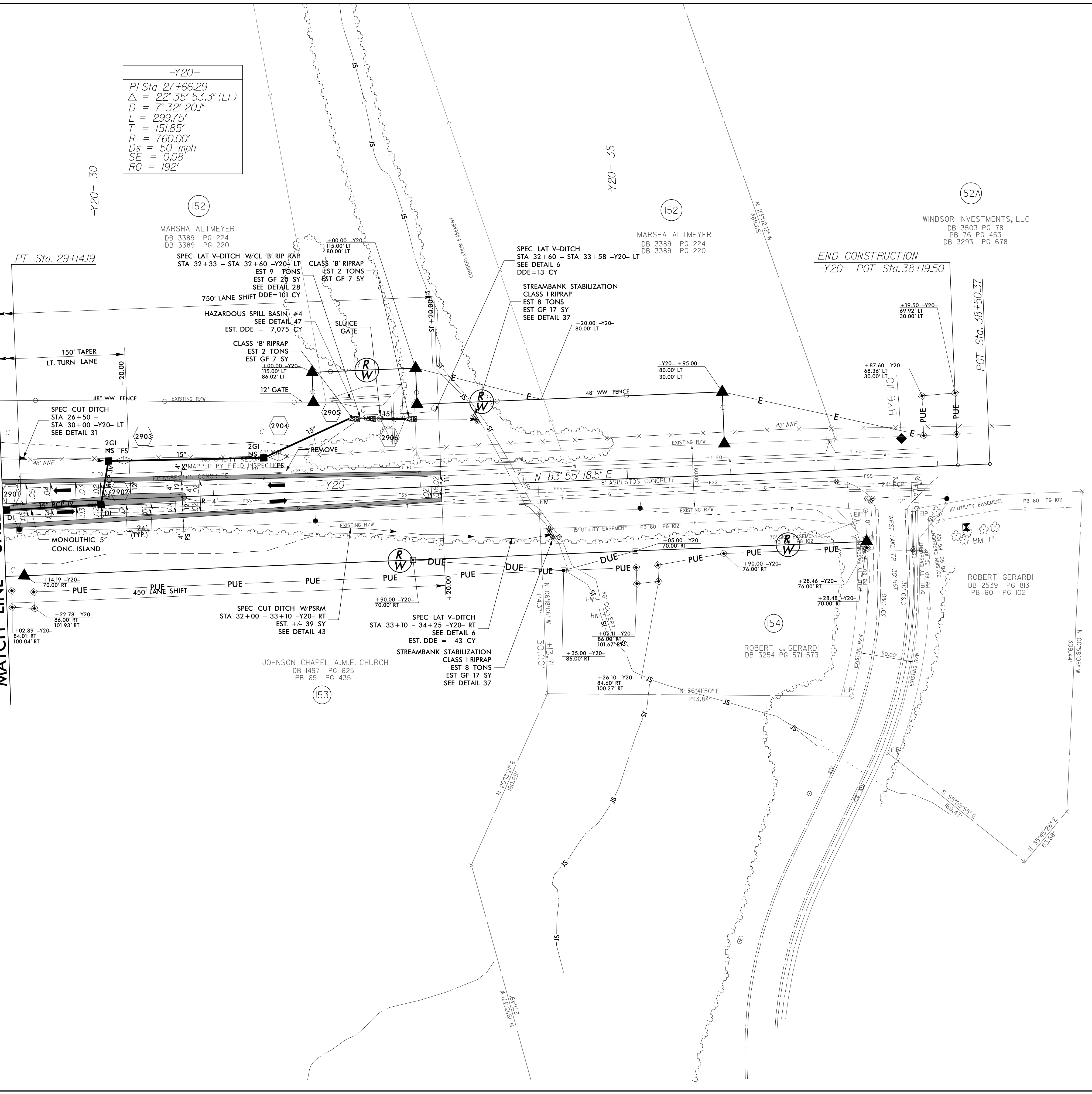


5/14/99

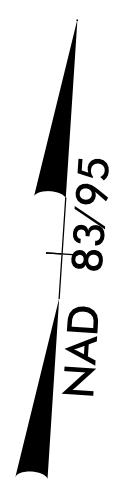
3/10/2017 12:41:17 PM U:\3109A\_rdu\_psh\_29.dgn  
USER: todd.buckler

REVISIONS

MATCH LINE - SHEET 18 -Y20- STATION 29+00



-Y20-  
 PI Sta 27+66.29  
 $\Delta = 22^{\circ} 35' 53.3" (LT)$   
 $D = 7^{\circ} 32' 20.1"$   
 $L = 299.75'$   
 $T = 151.85'$   
 $R = 760.00'$   
 $Ds = 50 \text{ mph}$   
 $SE = 0.08$   
 $RO = 192'$



PROJECT REFERENCE NO. U-3109A	SHEET NO. 29
RW SHEET NO.	
ROADWAY DESIGN ENGINEER	HYDRAULICS ENGINEER
Michael Baker Engineering, Inc. 1087011E7FF5435 3/10/2017	SUNGATE DESIGN GROUP, P.A. 108BAC9C14894C3 3/10/2017
DOCUMENT NOT CONSIDERED FINAL UNLESS ALL SIGNATURES COMPLETED	

FOR -Y20- PROFILE SEE SHEET 53 & 54