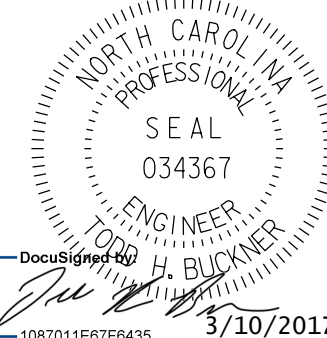
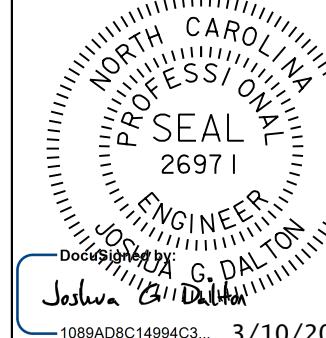
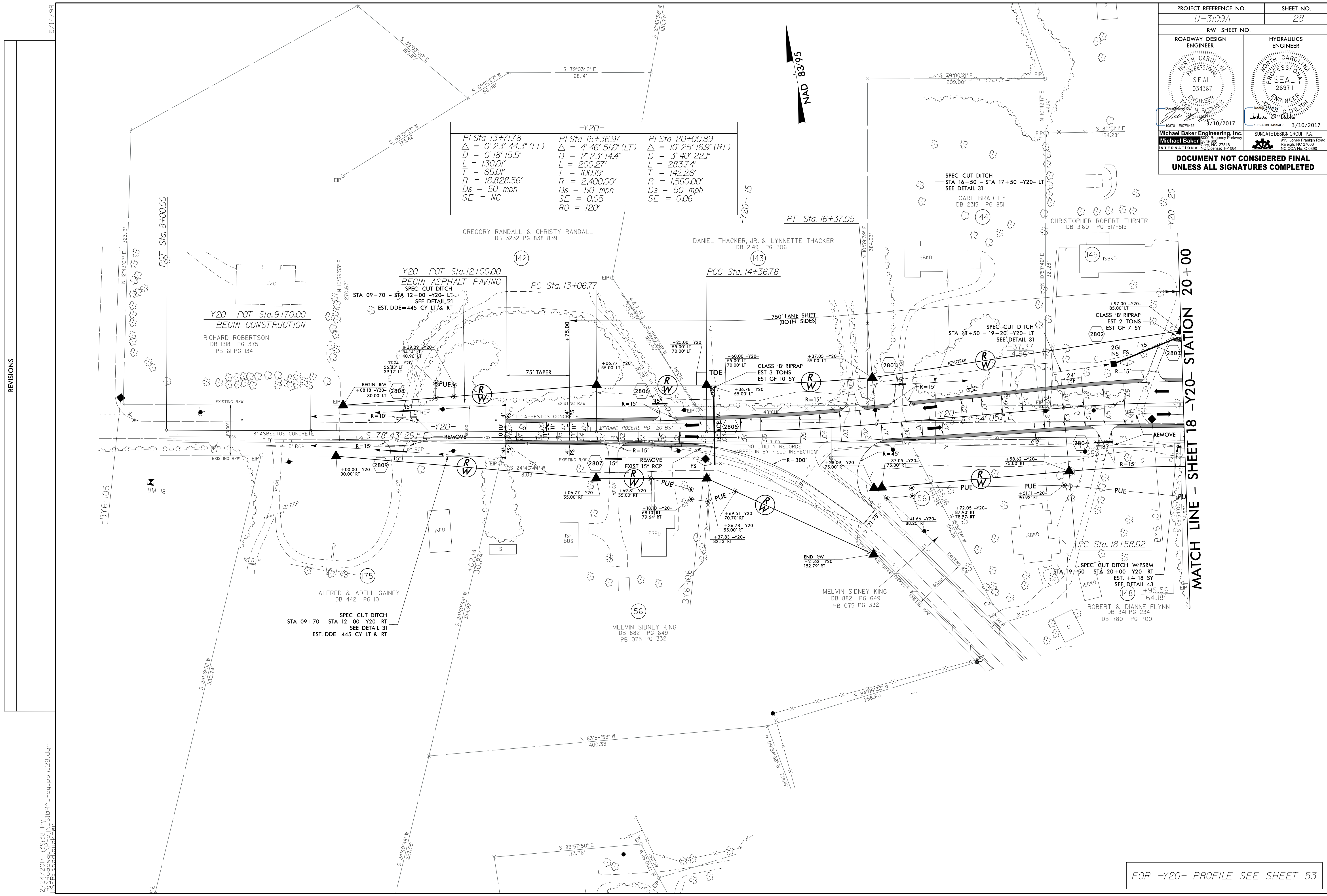


PROJECT REFERENCE NO. U-3109A		SHEET NO. 28	
RW SHEET NO.			
ROADWAY DESIGN ENGINEER		HYDRAULICS ENGINEER	
			
Michael Baker Engineering, Inc. 10800 Research Parkway Suite 600 Raleigh, NC 27618 INTERNATIONAL License: F-1084		SUNGATE DESIGN GROUP, P.A. 915 Jones Franklin Road Raleigh, NC 27605 NC COA No. G-0890	
DOCUMENT NOT CONSIDERED FINAL UNLESS ALL SIGNATURES COMPLETED			

-Y20-		
PI Sta 13+71.78	PI Sta 15+36.97	PI Sta 20+00.89
$\Delta = 0' 23' 44.3''$ (LT)	$\Delta = 4' 46' 51.6''$ (LT)	$\Delta = 10' 25' 16.9''$ (RT)
D = 0' 18' 15.5"	D = 2' 23' 14.4"	D = 3' 40' 22.1"
L = 130.0'	L = 200.27'	L = 283.74'
T = 65.0'	T = 100.19'	T = 142.26'
R = 18,828.56'	R = 2,400.00'	R = 1,560.00'
Ds = 50 mph	Ds = 50 mph	Ds = 50 mph
SE = NC	SE = 0.05	SE = 0.06
	RO = 120'	



REVISIONS

2/24/2017 11:39:36 AM U:\109A_rdy_psh_28.dgn
USER: boughnucker

FOR -Y20- PROFILE SEE SHEET 53