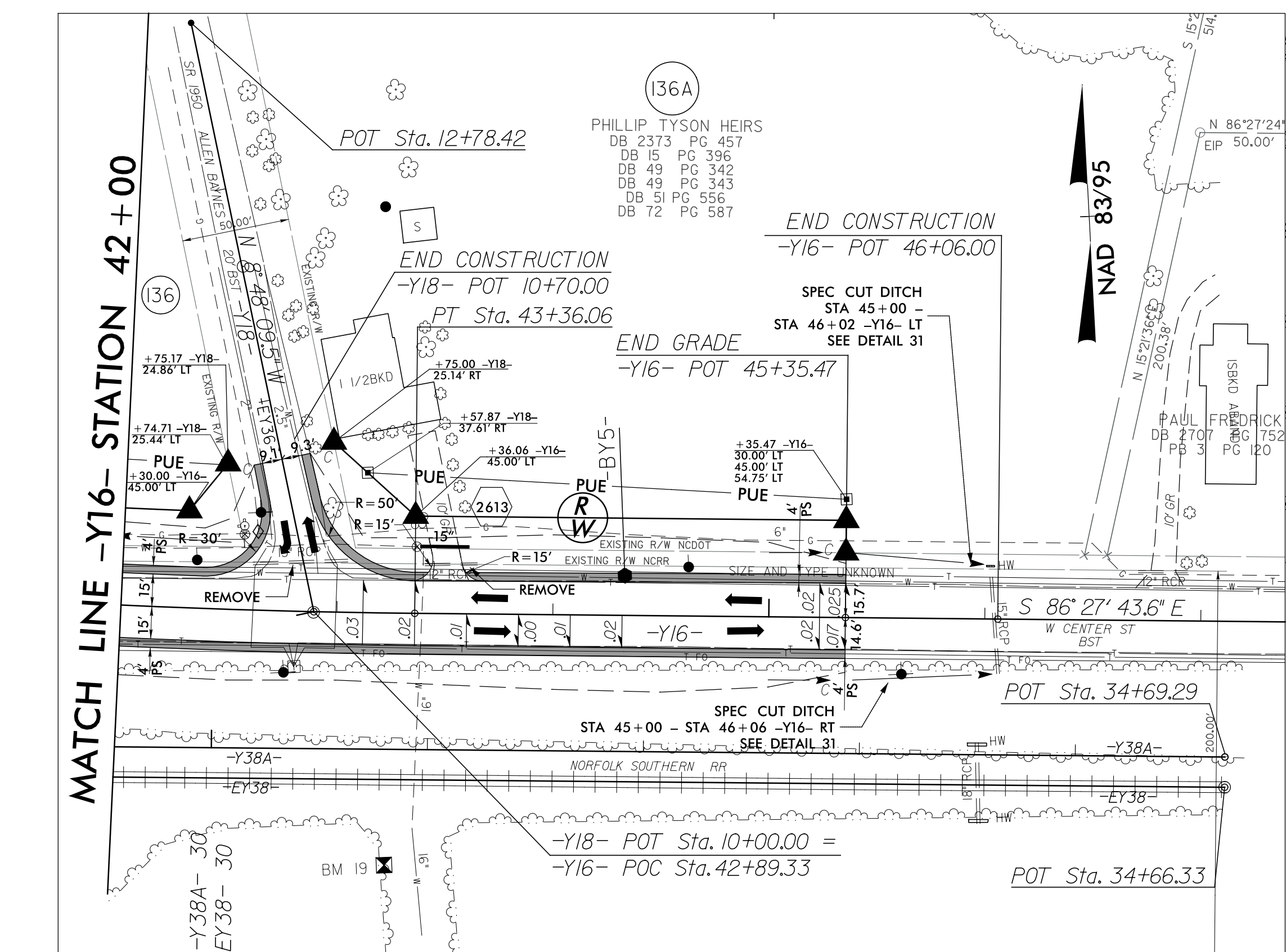
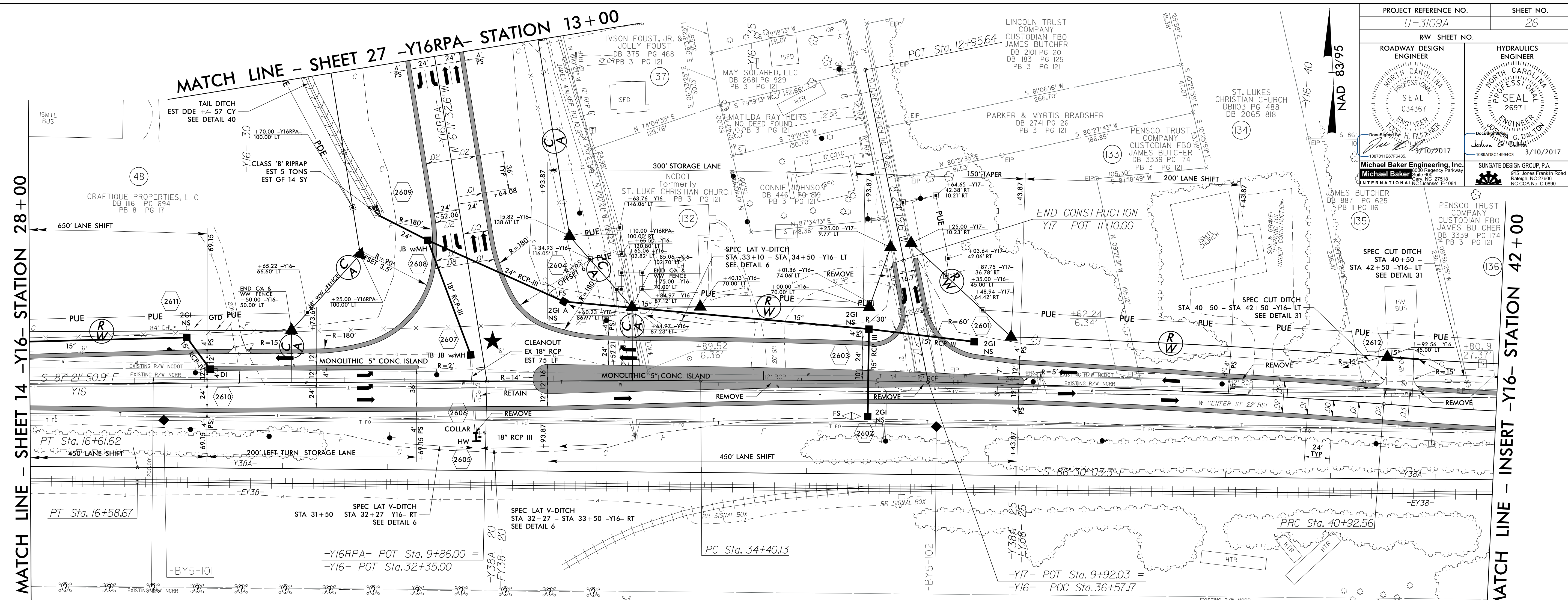


5/14/99

PROJECT REFERENCE NO. U-3109A		SHEET NO. 26	
RW SHEET NO.		HYDRAULICS ENGINEER	
ROADWAY DESIGN ENGINEER		SEAL 034367	
Michael Baker Engineering, Inc. 10870118776435 3/10/2017		SUNGATE DESIGN GROUP, P.A. 1089ADBC1499433... 3/10/2017	



-Y16-

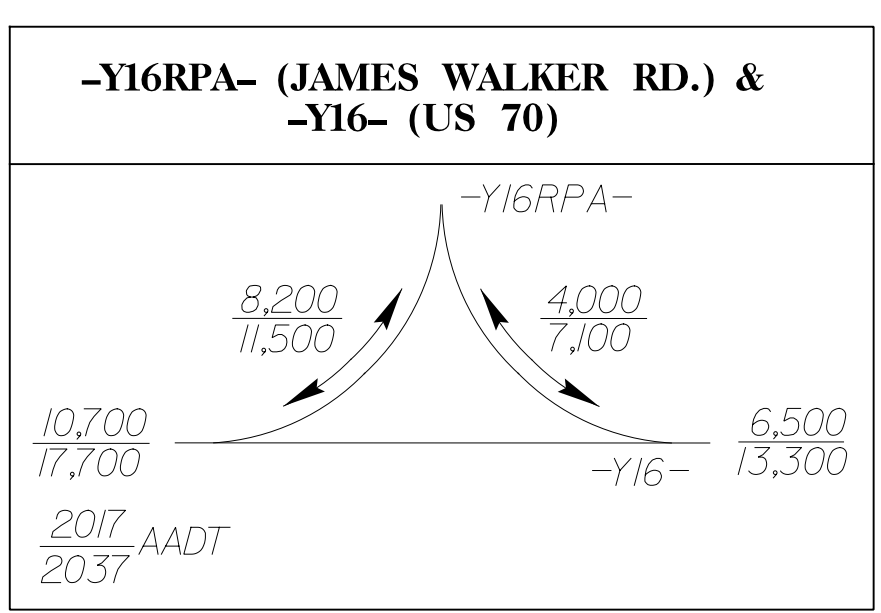
PI Sta 37+66.52	PI Sta 42+4.35
$\Delta = 4' 40'' 21.7''$ (RT)	$\Delta = 3' 46'' 14.3''$ (LT)
$D = 0' 42'' 58.3''$	$D = 1' 32'' 54.7''$
$L = 652.43'$	$L = 243.50'$
$T = 326.40'$	$T = 121.79'$
$R = 8,000.00'$	$R = 3,700.00'$
$Ds = 50$ mph	$Ds = 50$ mph
$SE = NC$	$SE = 0.03$

-EY38- (EXISTING RAILROAD)

PI Sta 14+18.91
$\Delta = 0' 11'' 54.5''$ (RT)
$D = 0' 02'' 29.0''$
$L = 479.51'$
$T = 239.76'$
$R = 138,418.22'$

-FUTURE RAILROAD-

PI Sta 14+21.84
$\Delta = 0' 11'' 54.5''$ (RT)
$D = 0' 02'' 29.0''$
$L = 479.56'$
$T = 239.78'$
$R = 138,432.22'$



DOCUMENT NOT CONSIDERED FINAL UNLESS ALL SIGNATURES COMPLETED

FOR -Y16- PROFILE SEE SHEET 51
FOR -Y16RPA- PROFILE SEE SHEET 52

REVISIONS

6/28/2017 10:50:01 AM U:\1099A_rdu.psh_26.dgn USER: jacob.buckner