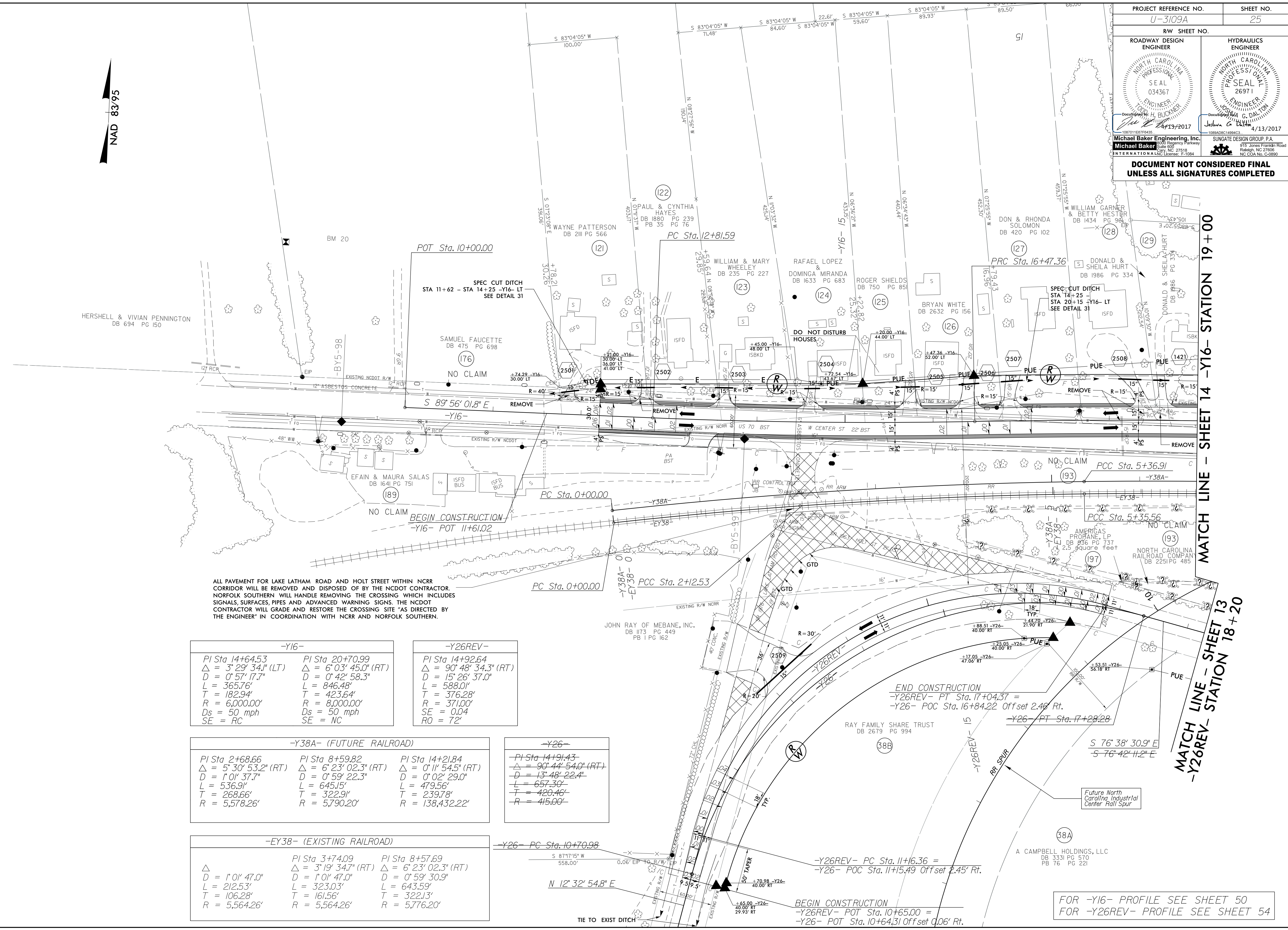


REVISIONS

PROJECT REFERENCE NO. U-3109A	SHEET NO. 25
RW SHEET NO.	
ROADWAY DESIGN ENGINEER	HYDRAULICS ENGINEER
Michael Baker Engineering, Inc. 1087011807F6435 1088AD0C14994C3	SUNGATE DESIGN GROUP, P.A. 915 Jones Franklin Road Raleigh, NC 27609 NC COA No. G-0890

**DOCUMENT NOT CONSIDERED FINAL
UNLESS ALL SIGNATURES COMPLETED**



ALL PAVEMENT FOR LAKE LATHAM ROAD AND HOLT STREET WITHIN NCR CORRIDOR WILL BE REMOVED AND DISPOSED OF BY THE NCDOT CONTRACTOR. NORFOLK SOUTHERN WILL HANDLE REMOVING THE CROSSING WHICH INCLUDES SIGNALS, SURFACES, PIPES AND ADVANCED WARNING SIGNS. THE NCDOT CONTRACTOR WILL GRADE AND RESTORE THE CROSSING SITE AS DIRECTED BY THE ENGINEER IN COORDINATION WITH NCR AND NORFOLK SOUTHERN.

-Y16-		-Y26REV-	
PI Sta 14+64.53	PI Sta 20+70.99	PI Sta 14+92.64	PI Sta 14+92.64
$\Delta = 3^{\circ} 29' 34.1''$ (LT)	$\Delta = 6^{\circ} 03' 45.0''$ (RT)	$\Delta = 90^{\circ} 48' 34.3''$ (RT)	$\Delta = 90^{\circ} 48' 34.3''$ (RT)
D = 0' 57' 17.7"	D = 0' 42' 58.3"	D = 15' 26' 37.0"	D = 15' 26' 37.0"
L = 365.76'	L = 846.48'	L = 588.01'	L = 588.01'
T = 182.94'	T = 423.64'	T = 376.28'	T = 376.28'
R = 6,000.00'	R = 8,000.00'	R = 371.00'	R = 371.00'
Ds = 50 mph	Ds = 50 mph	SE = 0.04	SE = 0.04
SE = RC	SE = NC	RO = 72'	RO = 72'

-Y38A- (FUTURE RAILROAD)			-Y26-	
PI Sta 2+68.66	PI Sta 8+59.82	PI Sta 14+21.84	PI Sta 14+191.43	PI Sta 14+191.43
$\Delta = 5^{\circ} 30' 53.2''$ (RT)	$\Delta = 6^{\circ} 23' 02.3''$ (RT)	$\Delta = 0^{\circ} 11' 54.5''$ (RT)	$\Delta = 90^{\circ} 44' 54.0''$ (RT)	$\Delta = 90^{\circ} 44' 54.0''$ (RT)
D = 1' 01' 37.7"	D = 0' 59' 22.3"	D = 0' 02' 29.0"	D = 13' 48' 22.4"	D = 13' 48' 22.4"
L = 536.91'	L = 645.15'	L = 479.56'	L = 657.30'	L = 657.30'
T = 268.66'	T = 322.91'	T = 239.78'	T = 420.46'	T = 420.46'
R = 5,578.26'	R = 5,790.20'	R = 138,432.22'	R = 415.00'	R = 415.00'

-EY38- (EXISTING RAILROAD)		
PI Sta 3+74.09	PI Sta 8+57.69	PI Sta 8+57.69
$\Delta = 1^{\circ} 01' 47.0''$	$\Delta = 3^{\circ} 19' 34.7''$ (RT)	$\Delta = 6^{\circ} 23' 02.3''$ (RT)
D = 212.53'	D = 1' 01' 47.0"	D = 0' 59' 30.9"
L = 212.53'	L = 323.03'	L = 643.59'
T = 106.28'	T = 161.56'	T = 322.13'
R = 5,564.26'	R = 5,564.26'	R = 5,776.20'

FOR -Y16- PROFILE SEE SHEET 50
FOR -Y26REV- PROFILE SEE SHEET 54

MATCH LINE - SHEET 14 -Y16- STATION 19+00

MATCH LINE - SHEET 13
-Y26REV- STATION 18+20