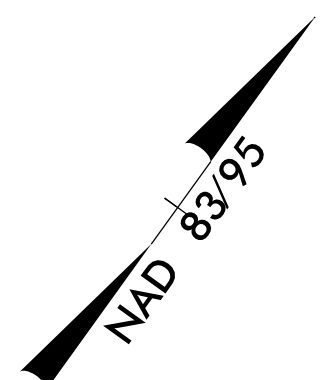
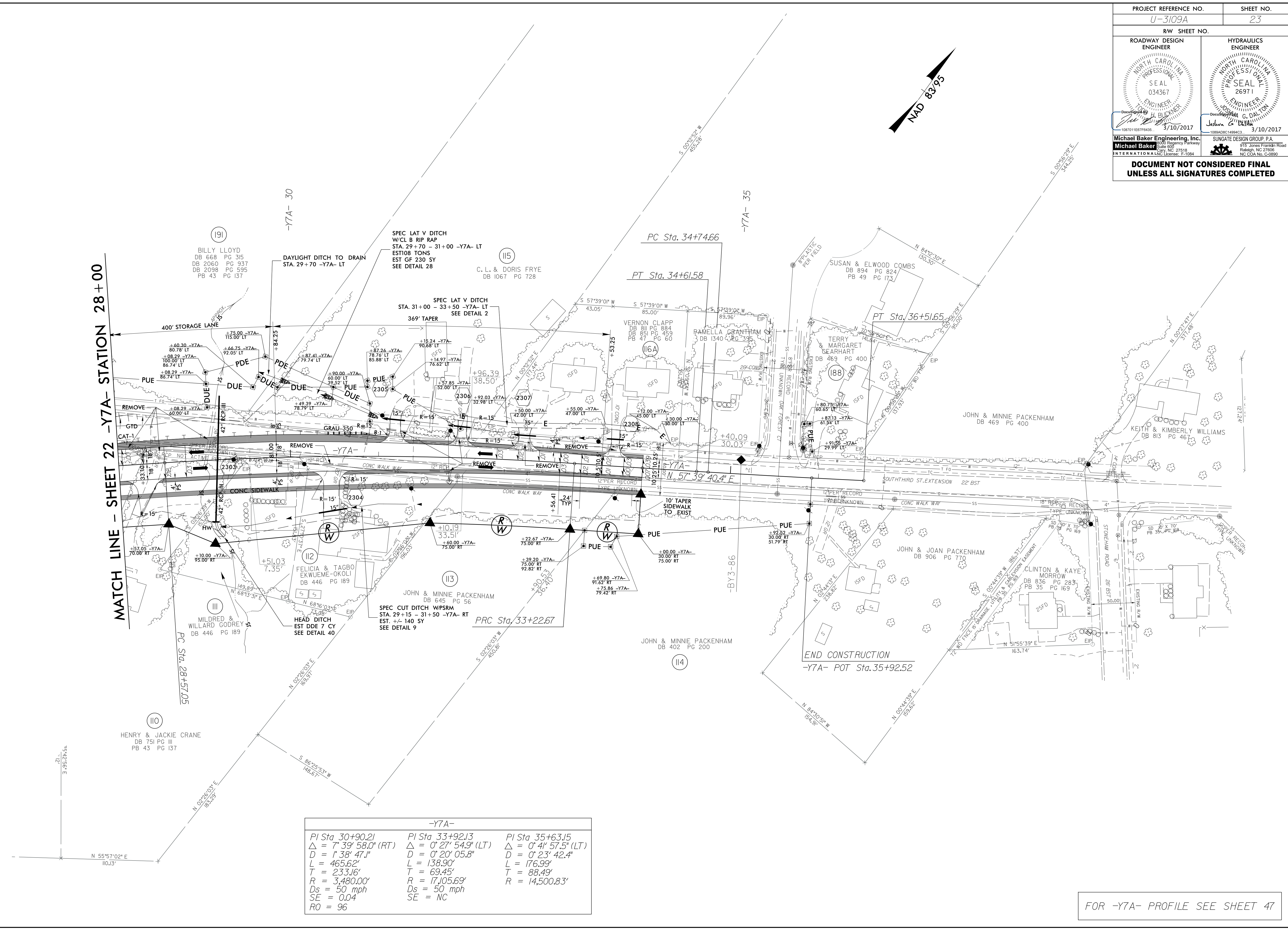


PROJECT REFERENCE NO. U-3109A	SHEET NO. 23
RW SHEET NO.	
ROADWAY DESIGN ENGINEER	HYDRAULICS ENGINEER
Michael Baker Engineering, Inc. 108701 EESTF6433 3/10/2017	SUNGATE DESIGN GROUP, P.A. 1089ADBC14994C3 3/10/2017
DOCUMENT NOT CONSIDERED FINAL UNLESS ALL SIGNATURES COMPLETED	



MATCH LINE - SHET 22 -Y7A- STATION 28+00



REVISIONS

2/24/2017 11:38:22 PM U:\1099A_rdu_psh_23.dgn
USER: todd.buckner

-Y7A-		
PI Sta 30+90.21	PI Sta 33+92.13	PI Sta 35+63.15
$\Delta = 7^{\circ} 39' 58.0''$ (RT)	$\Delta = 0^{\circ} 27' 54.9''$ (LT)	$\Delta = 0^{\circ} 41' 57.5''$ (LT)
$D = 1^{\circ} 38' 47.1''$	$D = 0^{\circ} 20' 05.8''$	$D = 0^{\circ} 23' 42.4''$
$L = 465.62'$	$L = 138.90'$	$L = 176.99'$
$T = 233.16'$	$T = 69.45'$	$T = 88.49'$
$R = 3,480.00'$	$R = 17,056.69'$	$R = 14,500.83'$
$Ds = 50$ mph	$Ds = 50$ mph	
$SE = 0.04$	$SE = NC$	
$RO = 96$		

FOR -Y7A- PROFILE SEE SHEET 47