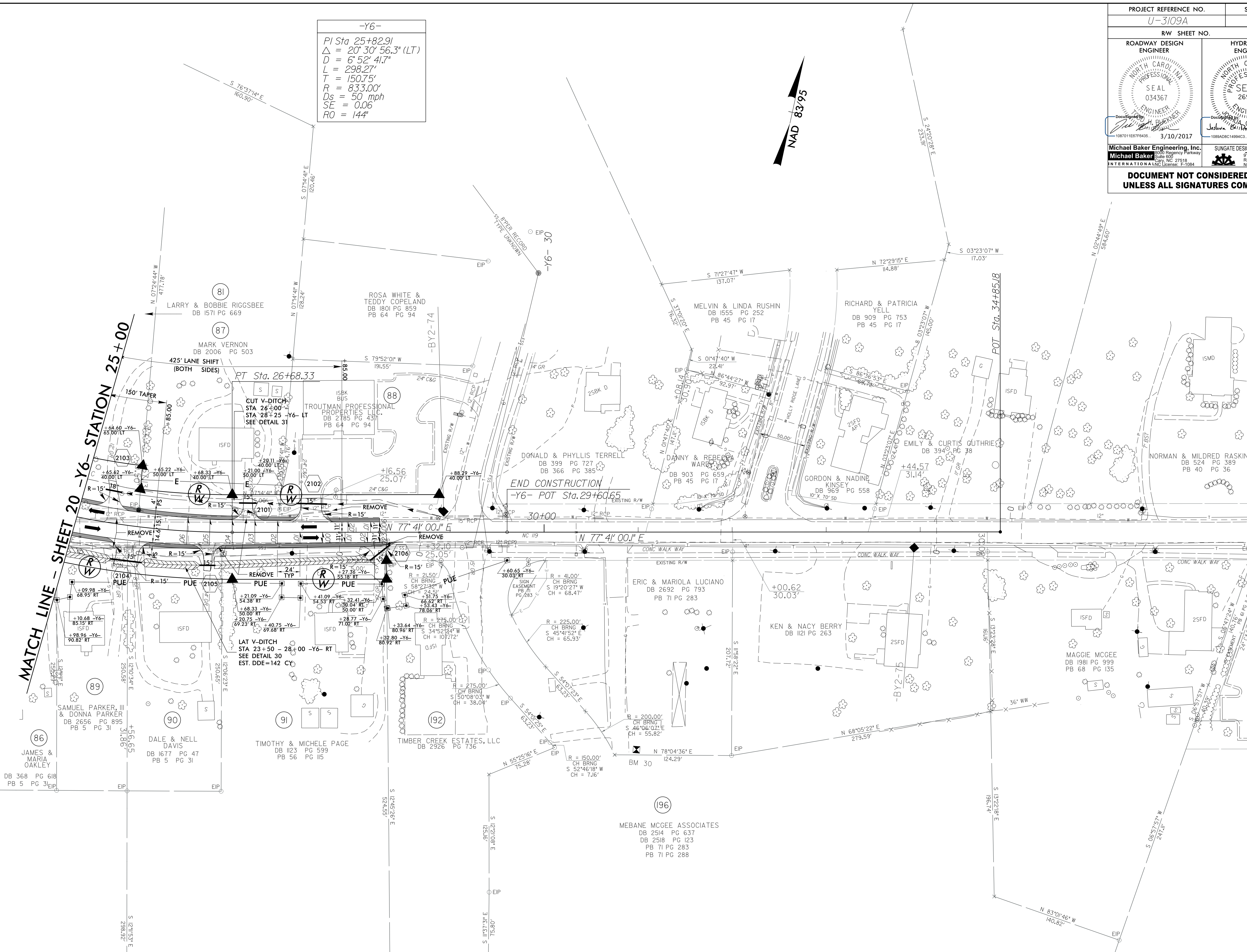


PROJECT REFERENCE NO. U-3109A	SHEET NO. 21
RW SHEET NO.	
ROADWAY DESIGN ENGINEER	HYDRAULICS ENGINEER
Michael Baker Engineering, Inc. 108101151779435 3/10/2017	SUNGATE DESIGN GROUP, P.A. 1088AD8C14894C3 3/10/2017
DOCUMENT NOT CONSIDERED FINAL UNLESS ALL SIGNATURES COMPLETED	

-Y6-

PI Sta 25+82.91
 $\Delta = 20' 30" 56.3" (LT)$
 $D = 6' 52" 41.7"$
 $L = 298.27'$
 $T = 150.75'$
 $R = 833.00'$
 $D_s = 50 \text{ mph}$
 $SE = 0.06$
 $RO = 144"$

NAD 83/95



REVISIONS

5/14/99

2/24/2017 11:37:36 AM U:\3109A_rdy_psh_21.dgn
 USER: goodluck

FOR -Y6- PROFILE SEE SHEET 44