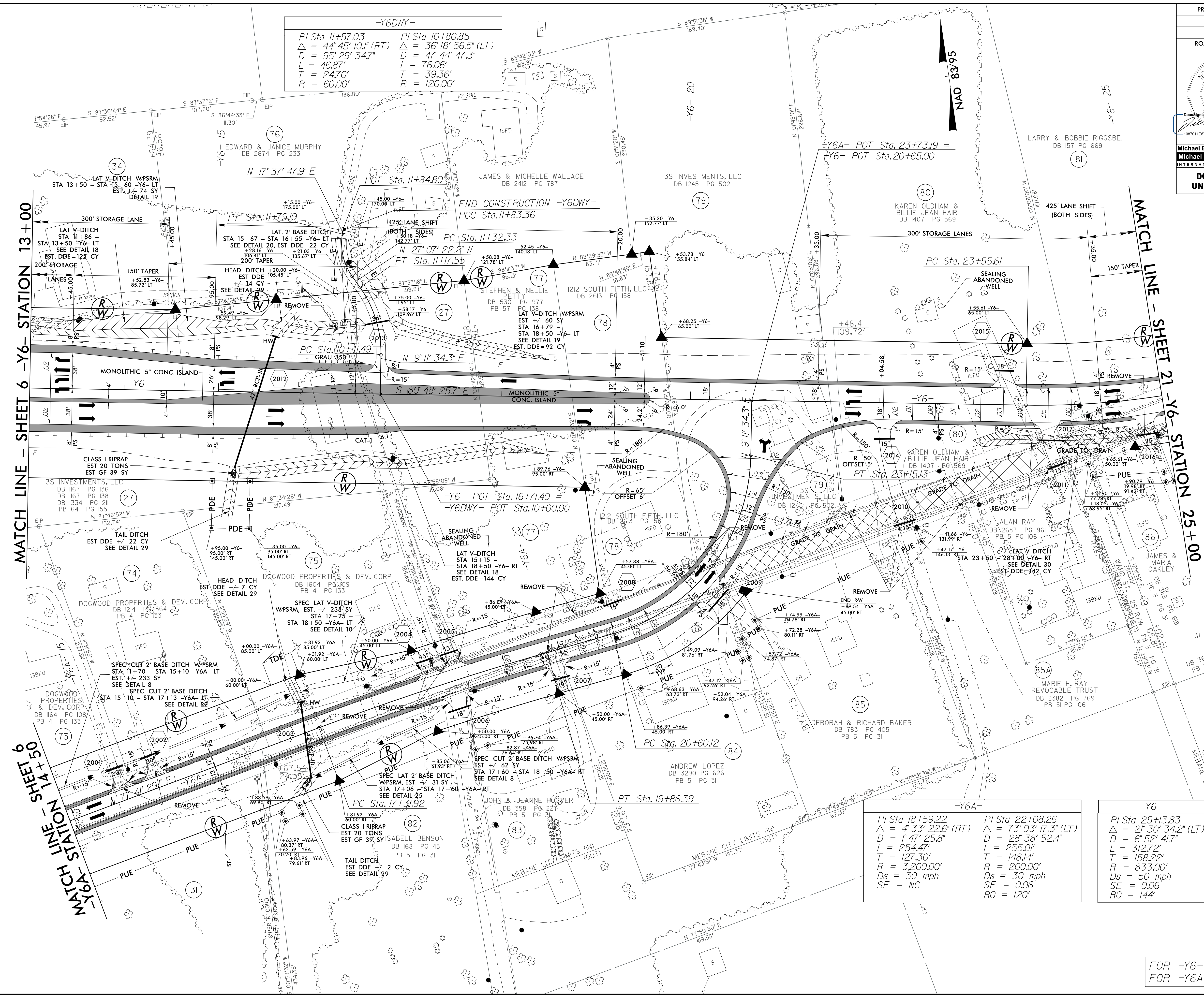


PROJECT REFERENCE NO. U-3109A	SHEET NO. 20
RW SHEET NO.	
ROADWAY DESIGN ENGINEER	HYDRAULICS ENGINEER
3/14/2017	3/14/2017
Michael Baker Engineering, Inc. 1089A/D/C/1499A/C/3	SUNGATE DESIGN GROUP, P.A. 915 Jones Franklin Road Raleigh, NC 27609 NC C.O.A. No. C-08990
DOCUMENT NOT CONSIDERED FINAL UNLESS ALL SIGNATURES COMPLETED	



-Y6DWY-

PI Sta 11+57.03 Δ = 44' 45" 10.1" (RT) D = 95' 29' 34.7" L = 46.87' T = 24.70' R = 60.00'	PI Sta 10+80.85 Δ = 36' 18" 56.5" (LT) D = 47' 44' 47.3" L = 76.06' T = 39.36' R = 120.00'
--	---

-Y6A-

PI Sta 18+59.22 Δ = 4' 33" 22.6" (RT) D = 1' 47" 25.8" L = 254.47' T = 127.30' R = 3,200.00' Ds = 30 mph SE = NC	PI Sta 22+08.26 Δ = 7' 03" 17.3" (LT) D = 28' 38" 52.4" L = 255.01' T = 148.14' R = 200.00' Ds = 30 mph SE = 0.06 RO = 120'
---	---

-Y6-

PI Sta 25+3.83 Δ = 21' 30" 34.2" (LT) D = 6' 52" 41.7" L = 312.72' T = 158.22' R = 833.00' Ds = 50 mph SE = 0.06 RO = 144'
--

FOR -Y6- PROFILE SEE SHEET 44
FOR -Y6A- PROFILE SEE SHEET 45

REVISIONS

3/14/2017 4:27:28 PM U:\109A_rdy.psh.20.dgn
USER: todd.buckler