

5/14/1999

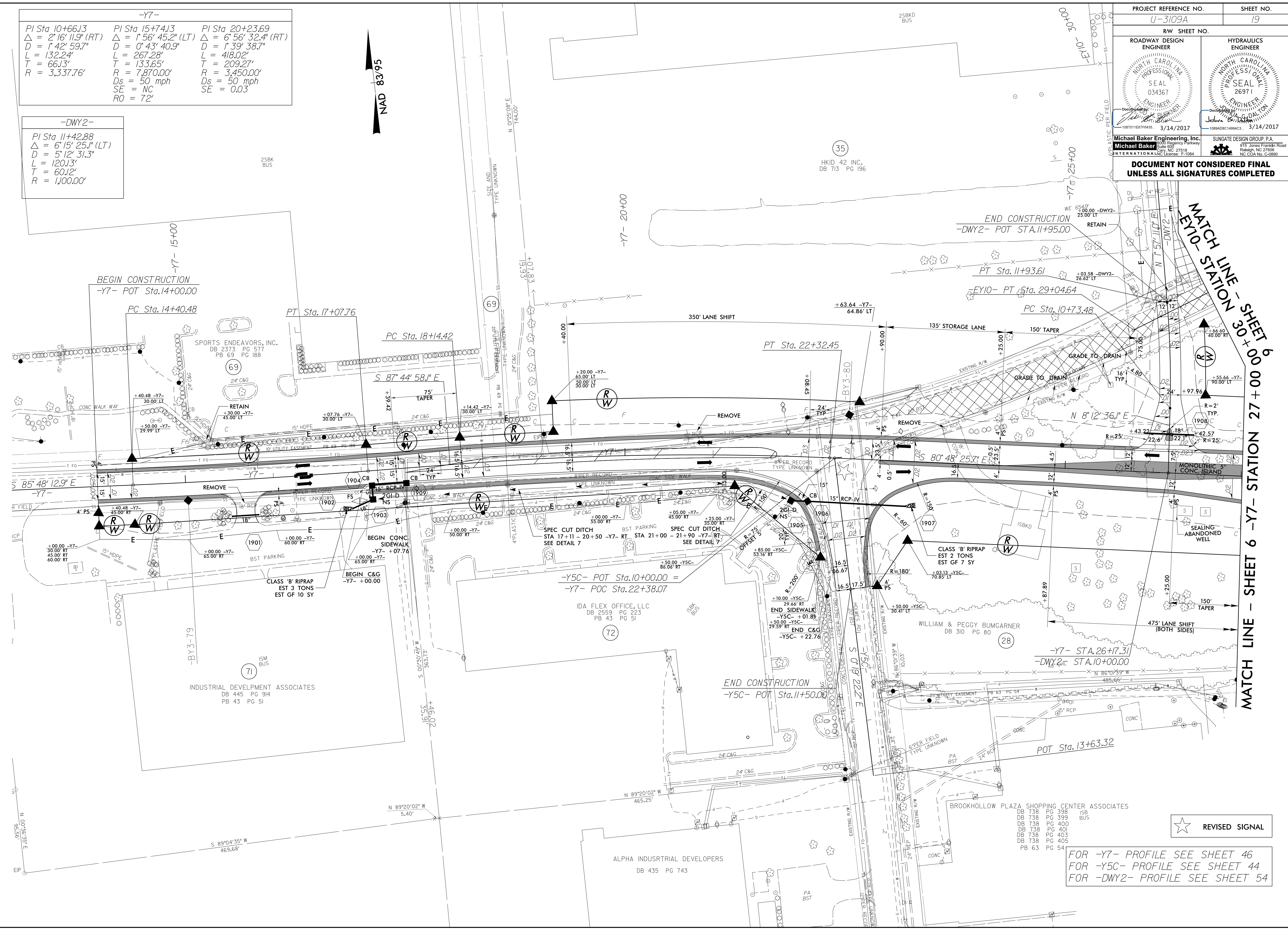
-Y7-		
PI Sta 10+66.13	PI Sta 15+74.13	PI Sta 20+23.69
$\Delta = 2^{\circ}16'11.9"$ (RT)	$\Delta = 1^{\circ}56'45.2"$ (LT)	$\Delta = 6^{\circ}56'32.4"$ (RT)
$D = 1^{\circ}42'59.7"$	$D = 0^{\circ}43'40.9"$	$D = 1^{\circ}39'38.7"$
$L = 132.24'$	$L = 267.28'$	$L = 418.02'$
$T = 66.13'$	$T = 133.65'$	$T = 209.27'$
$R = 3,337.76'$	$R = 7,870.00'$	$R = 3,450.00'$
	$D_s = 50$ mph	$D_s = 50$ mph
	$SE = NC$	$SE = 0.03$
	$RO = 72'$	

-DWY2-
PI Sta 11+42.88
$\Delta = 6^{\circ}15'25.1"$ (LT)
$D = 5^{\circ}12'31.3"$
$L = 120.13'$
$T = 60.12'$
$R = 1,100.00'$

NAD 83/95

PROJECT REFERENCE NO. U-3109A	SHEET NO. 19
ROADWAY DESIGN ENGINEER	HYDRAULICS ENGINEER
Michael Baker Engineering, Inc. 10801 HESTER RD. RALEIGH, NC 27618 LICENSE: E-1084	SUNGATE DESIGN GROUP, P.A. 915 JONES FRANKLIN ROAD RALEIGH, NC 27609 LICENSE: E-1084
3/14/2017	3/14/2017
DOCUMENT NOT CONSIDERED FINAL UNLESS ALL SIGNATURES COMPLETED	

REVISIONS



3/14/2017 4:56:24 PM U:\109A_rdy_psh_19.dgn
USER: addabucce

MATCH LINE - SHEET 30 + 00.00
MATCH LINE - SHEET 6 -Y7- STATION 27 + 00.00
MATCH LINE - SHEET 30 + 00.00

FOR -Y7- PROFILE SEE SHEET 46
FOR -Y5C- PROFILE SEE SHEET 44
FOR -DWY2- PROFILE SEE SHEET 54

★ REVISED SIGNAL