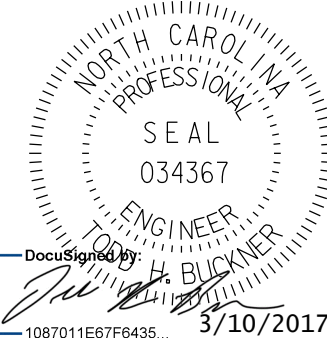
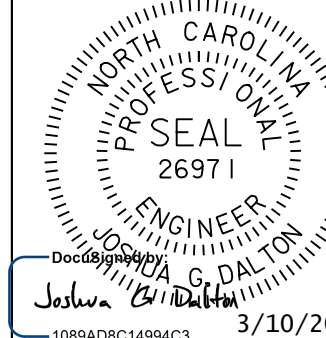




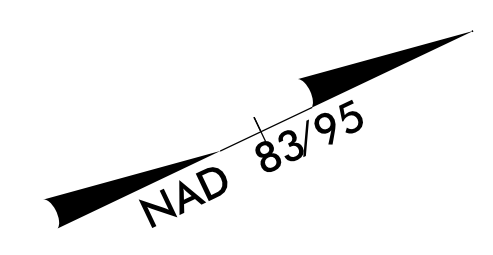
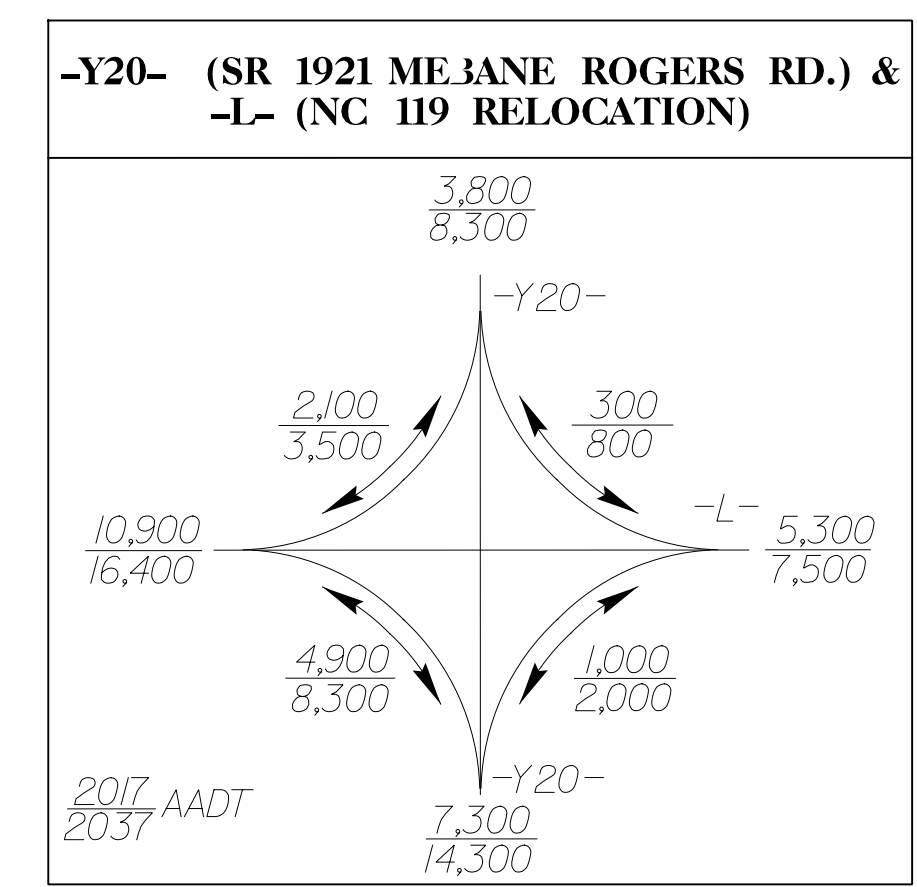
PROJECT REFERENCE NO. U-3109A		SHEET NO. 18	
RW SHEET NO.			
ROADWAY DESIGN ENGINEER		HYDRAULICS ENGINEER	
			
			
Michael Baker Engineering, Inc. 108701 108943 3/10/2017 108943 108943 3/10/2017 SUNGATE DESIGN GROUP, P.A. 915 Jones Franklin Road Raleigh, NC 27606 NC COA No. C-0890			
DOCUMENT NOT CONSIDERED FINAL UNLESS ALL SIGNATURES COMPLETED			

Pls Sta 186+79.66
 $\Delta s = 2' 17" 30.6"$
 $L s = 200.00'$
 $L T = 133.34'$
 $S T = 66.68'$

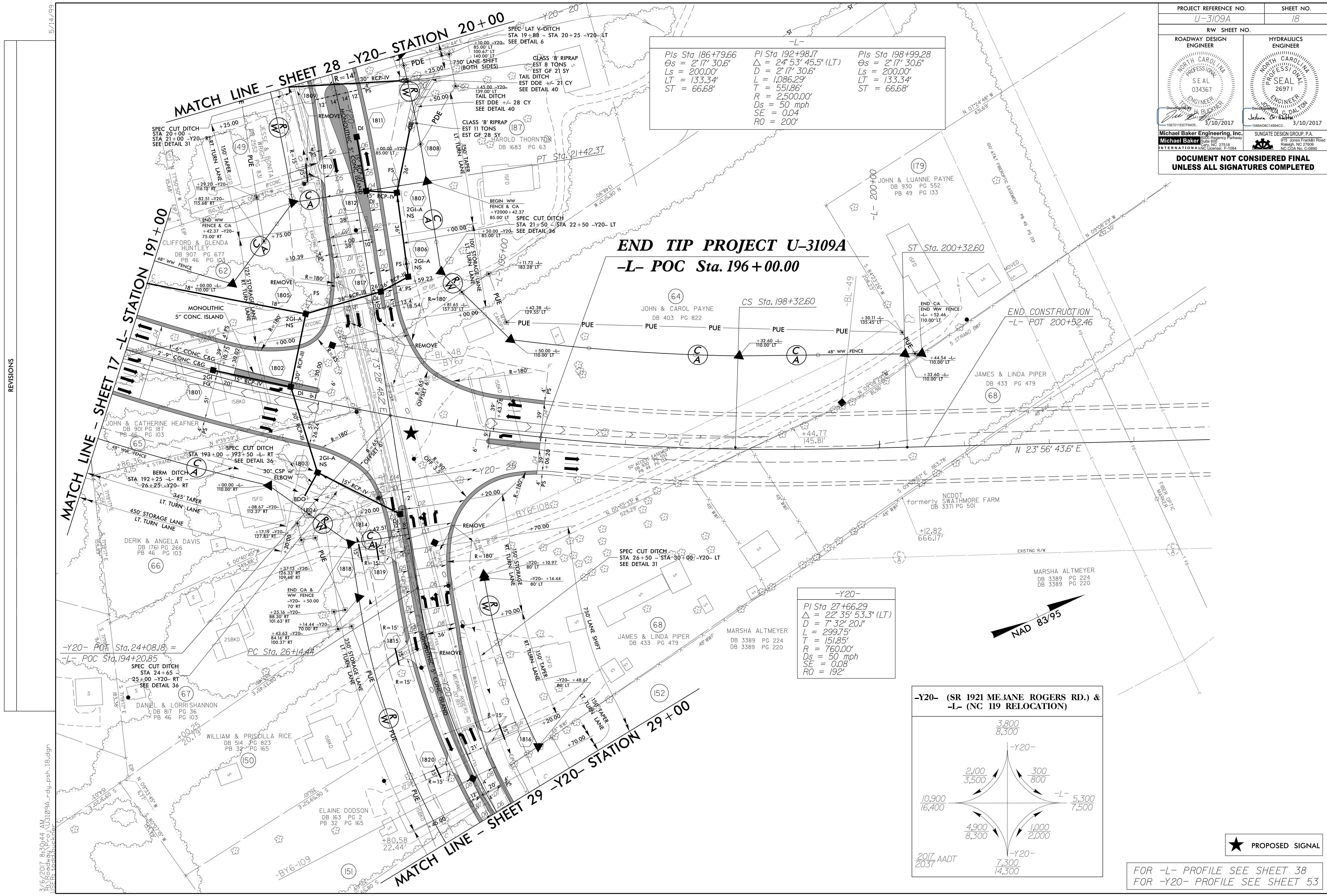
Pl Sta 192+98.17
 $\Delta = 24' 53" 45.5" (L T)$
 $D = 2' 17" 30.6"$
 $L = 1,086.29'$
 $T = 551.86'$
 $D s = 2,500.00'$
 $S E = 0.04$
 $R O = 200'$

Pls Sta 198+99.28
 $\Delta s = 2' 17" 30.6"$
 $L s = 200.00'$
 $L T = 133.34'$
 $S T = 66.68'$

-Y20-
 Pl Sta 27+66.29
 $\Delta = 22' 35" 53.3" (L T)$
 $D = 7' 32" 20.1"$
 $L = 299.75'$
 $T = 151.85'$
 $R = 760.00'$
 $D s = 50 \text{ mph}$
 $S E = 0.08$
 $R O = 192'$



FOR -L- PROFILE SEE SHEET 38
 FOR -Y20- PROFILE SEE SHEET 53



REVISIONS

3/6/2017, 8:30:44 AM, U-3109A_rdy_psh_18.dgn
 USER: jaddison