

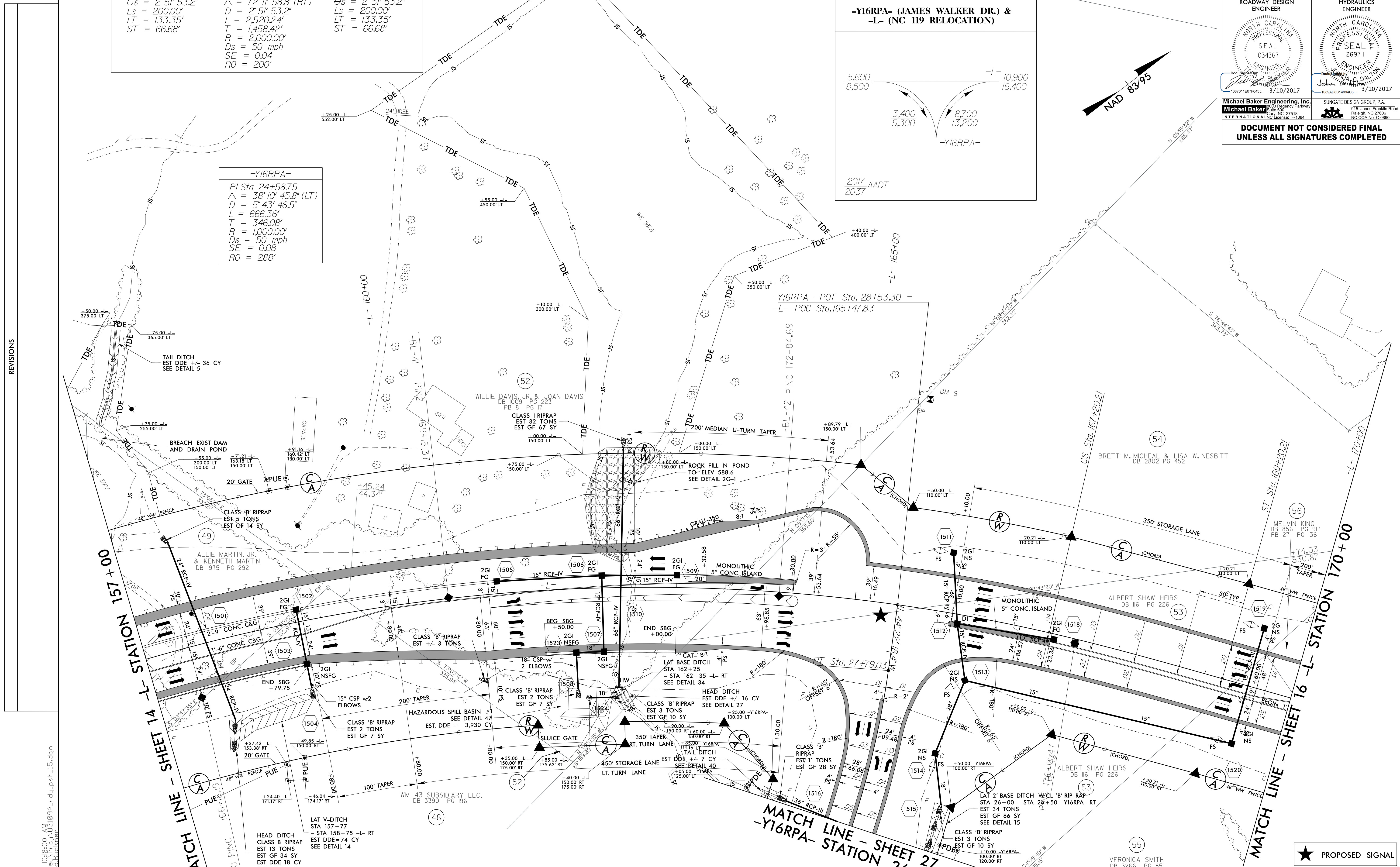
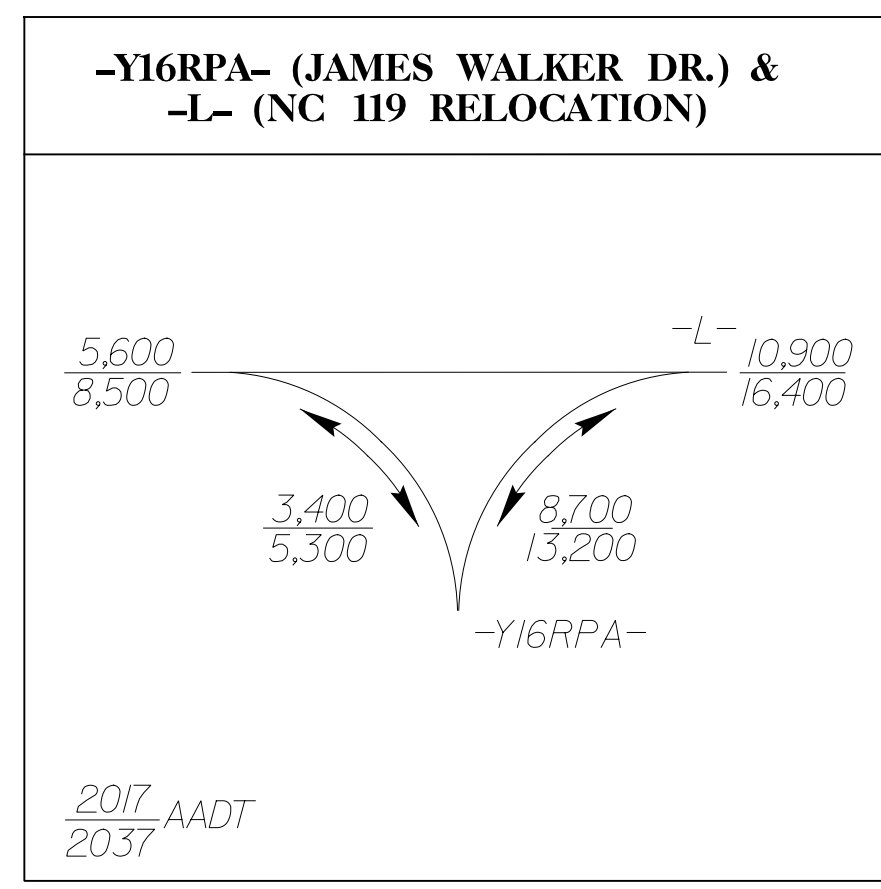
PROJECT REFERENCE NO. U-3109A	SHEET NO. 15
RW SHEET NO.	
ROADWAY DESIGN ENGINEER	HYDRAULICS ENGINEER
Michael Baker Engineering, Inc. 10000 Regency Parkway Suite 600 Raleigh, NC 27618 Tel: 919.876.1000 Fax: 919.876.1001 www.michaelbaker.com	SUNGATE DESIGN GROUP, P.A. 915 Jones Franklin Road Raleigh, NC 27605 Tel: 919.876.1000 Fax: 919.876.1001 www.sungate.com
DOCUMENT NOT CONSIDERED FINAL UNLESS ALL SIGNATURES COMPLETED	

-L-
Pls Sta 141+33.32
 $\Delta = 2' 5" 53.2"$
 $L_s = 200.00'$
 $LT = 133.35'$
 $ST = 66.68'$

Pls Sta 156+58.38
 $\Delta = 72' 11" 58.8" (RT)$
 $D = 2' 5" 53.2"$
 $L = 2,520.24'$
 $T = 1,458.42'$
 $R = 2,000.00'$
 $D_s = 50 \text{ mph}$
 $SE = 0.04$
 $RO = 200'$

Pls Sta 167+86.90
 $\Delta = 2' 5" 53.2"$
 $L_s = 200.00'$
 $LT = 133.35'$
 $ST = 66.68'$

-Y16RPA-
Pls Sta 24+58.75
 $\Delta = 38' 10" 45.8" (LT)$
 $D = 5' 43" 46.5"$
 $L = 666.36'$
 $T = 346.08'$
 $R = 1,000.00'$
 $D_s = 50 \text{ mph}$
 $SE = 0.08$
 $RO = 288'$



REVISIONS

2/28/2017 10:38:00 AM U:\109A_rdy_psh_15.dgn
User: jacob.burke

MATCH LINE - SHEET 14 - L- STATION 157 + 00

MATCH LINE - SHEET 27
-Y16RPA- STATION 26 + 00

MATCH LINE - SHEET 16 - L- STATION 170 + 00

★ PROPOSED SIGNAL

FOR -L- PROFILE SEE SHEET 37
FOR -Y16RPA- PROFILE SEE SHEET 52