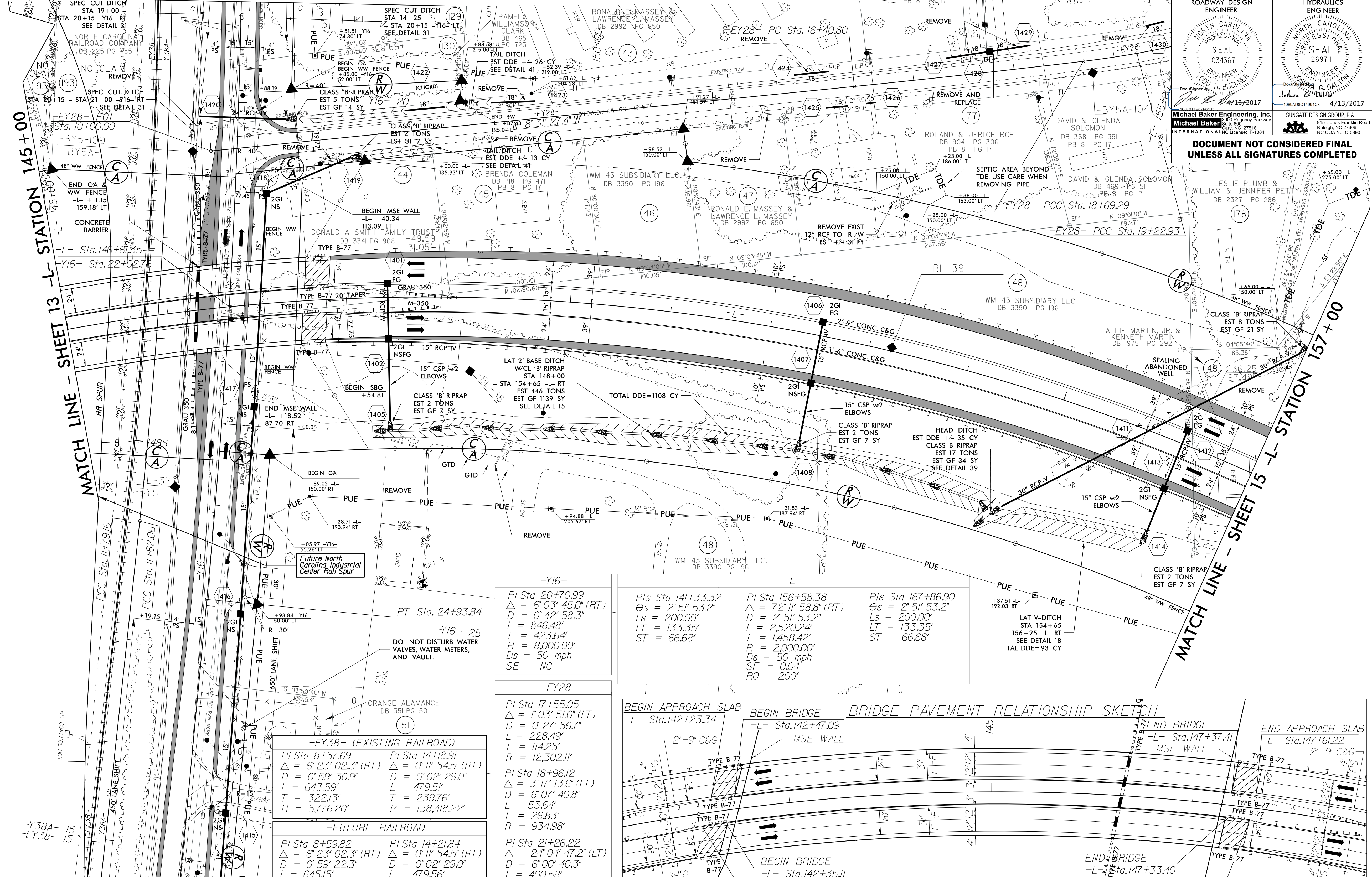


5/14/1999

MATCH LINE - SHEET 25 -Y16- STATION 19+00

NAD 83/95

PROJECT REFERENCE NO. U-3109A	SHEET NO. 14
ROADWAY DESIGN ENGINEER NORTH CAROLINA PROFESSIONAL SEAL 034367 TODD H. BUCKNER 1089ADBC14994C3... 4/13/2017	HYDRAULICS ENGINEER NORTH CAROLINA PROFESSIONAL SEAL 26971 JOSHUA G. DALTON 1089ADBC14994C3... 4/13/2017
Michael Baker Engineering, Inc. 915 Jones Franklin Road Raleigh, NC 27609 INTERNATIONAL LIC. License: F-11084	
SUNGATE DESIGN GROUP P.A. 915 Jones Franklin Road Raleigh, NC 27609 NC COA No. C-08990	
DOCUMENT NOT CONSIDERED FINAL UNLESS ALL SIGNATURES COMPLETED	



MATCH LINE - SHEET 26 -Y16- STATION 28+00.00

-Y16-

PI Sta 20+70.99 Δ = 6° 03' 45.0" (RT) D = 0' 42' 58.3" L = 846.48' T = 423.64' R = 8,000.00' Ds = 50 mph SE = NC

-L-

PIs Sta 141+33.32 Δs = 2° 51' 53.2" Ls = 200.00' LT = 133.35' ST = 66.68'	PI Sta 156+58.38 Δ = 72° 11' 58.8" (RT) D = 2° 51' 53.2" Ls = 200.00' L = 2,520.24' T = 1,458.42' R = 2,000.00' Ds = 50 mph SE = 0.04 RO = 200'	PIs Sta 167+86.90 Δs = 2° 51' 53.2" Ls = 200.00' LT = 133.35' ST = 66.68'
---	--	---

-EY28-

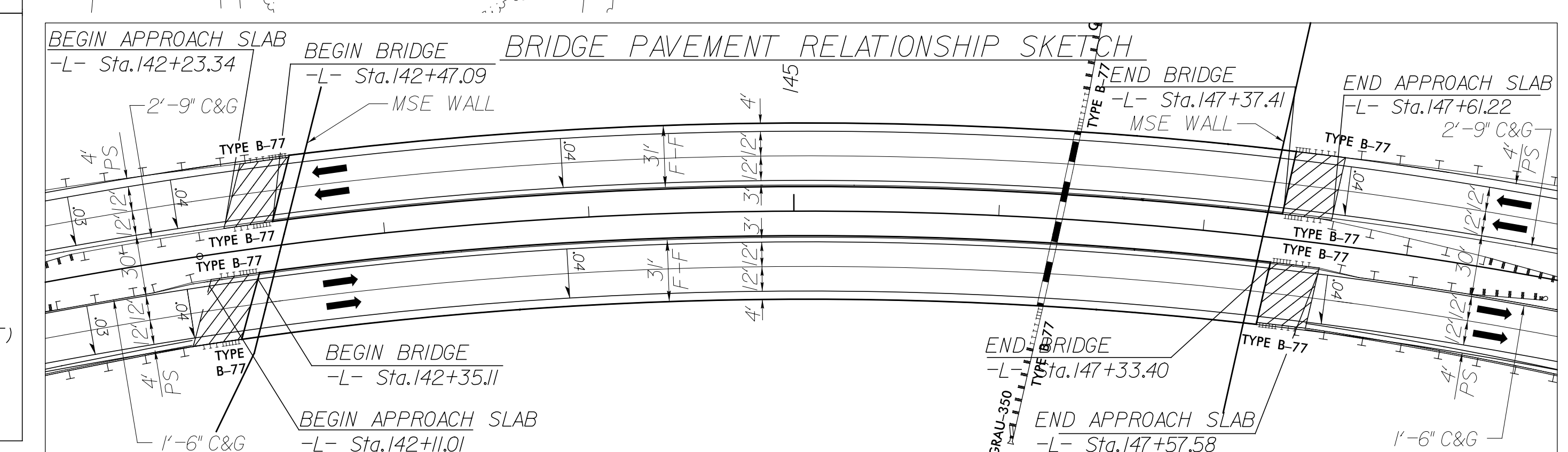
PI Sta 17+55.05 Δ = 1° 03' 51.0" (LT) D = 0' 27' 56.7" L = 228.49' T = 114.25' R = 12,302.11'	PI Sta 18+96.12 Δ = 3° 17' 13.6" (LT) D = 6° 07' 40.8" L = 53.64' T = 26.83' R = 934.98'	PI Sta 21+26.22 Δ = 24° 04' 47.2" (LT) D = 6° 00' 40.3" L = 400.58' T = 203.29' R = 953.15'
--	---	--

-EY38- (EXISTING RAILROAD)

PI Sta 8+57.69 Δ = 6° 23' 02.3" (RT) D = 0° 59' 30.9" L = 643.59' T = 322.13' R = 5,776.20'	PI Sta 14+18.91 Δ = 0° 11' 54.5" (RT) D = 0° 02' 29.0" L = 479.51' T = 239.78' R = 138,418.22'
--	---

-FUTURE RAILROAD-

PI Sta 8+59.82 Δ = 6° 23' 02.3" (RT) D = 0° 59' 22.3" L = 645.15' T = 322.91' R = 5,790.20'	PI Sta 14+21.84 Δ = 0° 11' 54.5" (RT) D = 0° 02' 29.0" L = 479.56' T = 239.78' R = 138,432.22'
--	---



FOR -L- PROFILE SEE SHEETS 36 & 37
 FOR -Y16- PROFILE SEE SHEETS 50 & 51
 FOR STRUCTURE #2 SEE SHEETS S02-1 THRU S02-51
 FOR STRUCTURE #3 SEE SHEETS S03-1 THRU S03-53
 FOR WALL SEE SHEETS W-1 THRU W-6

REVISIONS

4/13/2017 10:14:43 AM U:\3109A_rdy_psh_14.dgn
USER: todd.buckner