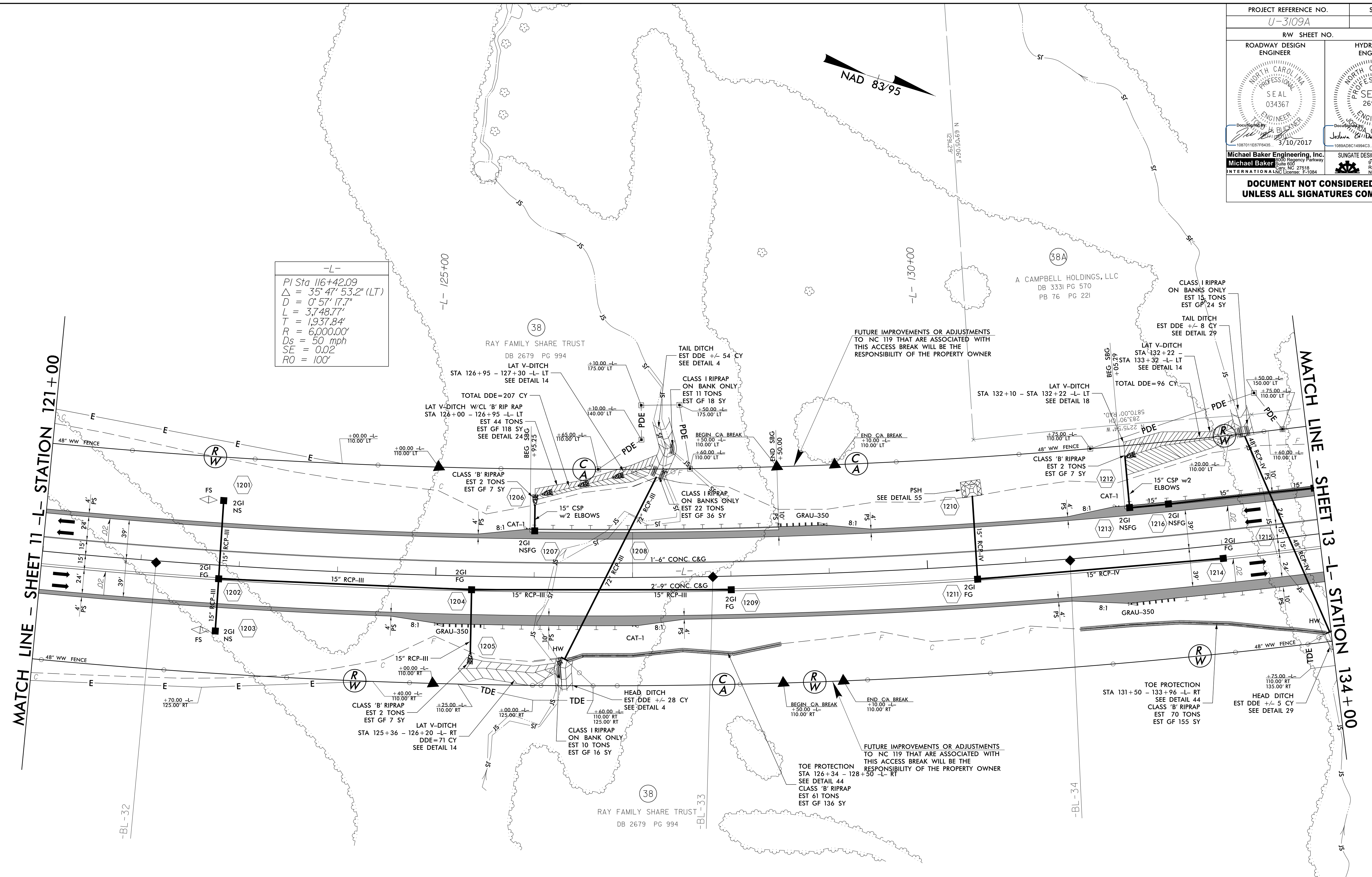


PROJECT REFERENCE NO. U-3109A	SHEET NO. 12
RW SHEET NO.	
ROADWAY DESIGN ENGINEER	HYDRAULICS ENGINEER
Michael Baker Engineering, Inc. 1087011E077F6A33 3/10/2017	SUNGATE DESIGN GROUP, P.A. 1088AD0C14894C3 3/10/2017
DOCUMENT NOT CONSIDERED FINAL UNLESS ALL SIGNATURES COMPLETED	



-L-
 PI Sta 116+42.09
 $\Delta = 35^{\circ} 47' 53.2'' (LT)$
 $D = 0^{\circ} 57' 17.7''$
 $L = 3,748.77'$
 $T = 1,937.84'$
 $R = 6,000.00'$
 $D_s = 50 \text{ mph}$
 $SE = 0.02$
 $RO = 100'$

REVISIONS

MATCH LINE - SHEET 11 -L- STATION 121+00

MATCH LINE - SHEET 13 -L- STATION 134+00

FOR -L- PROFILE SEE SHEET 36

2/24/2017 11:34:53 AM U:\109A_rdy_psh_12.dgn
USER: jacob.buckner