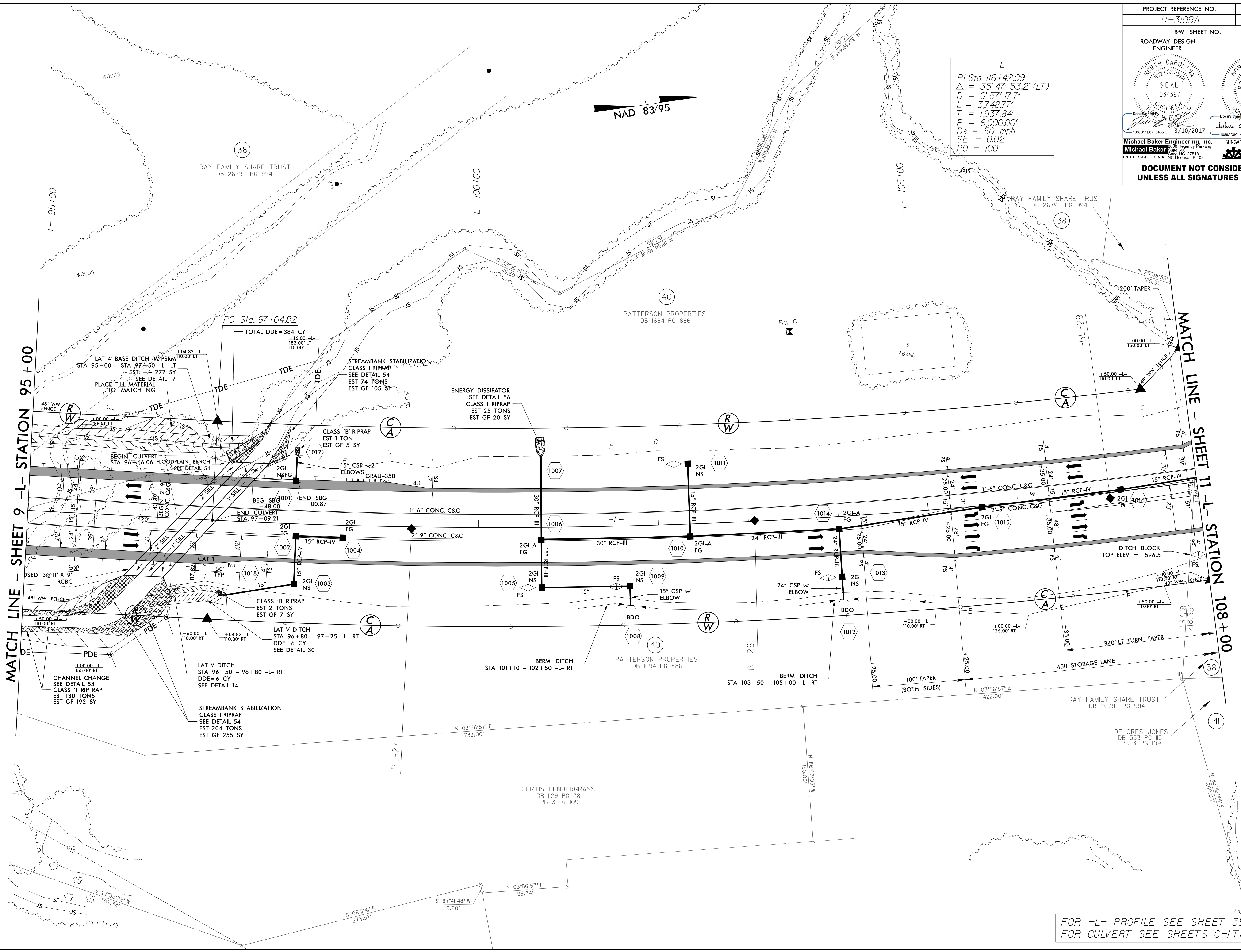


PROJECT REFERENCE NO. U-3109A	SHEET NO. 10
RW SHEET NO.	
ROADWAY DESIGN ENGINEER	HYDRAULICS ENGINEER
Michael Baker Engineering, Inc. 108701160776435 3/10/2017	SUNGATE DESIGN GROUP, P.A. 1089AD8C14994C3 3/10/2017
DOCUMENT NOT CONSIDERED FINAL UNLESS ALL SIGNATURES COMPLETED	

-L-

PI Sta 116+42.09
 $\Delta = 35' 47" 53.2" (LT)$
 $D = 0' 57" 17.7"$
 $L = 3,748.77'$
 $T = 1,937.84'$
 $R = 6,000.00'$
 $Ds = 50 \text{ mph}$
 $SE = 0.02$
 $RO = 100'$

NAD 83/95



REVISIONS

3/7/2017 3:32:45 PM U:\3109A_rdy_psh_10.dgn
 USER: todd.buckner

FOR -L- PROFILE SEE SHEET 35
 FOR CULVERT SEE SHEETS C-1 THRU C-15