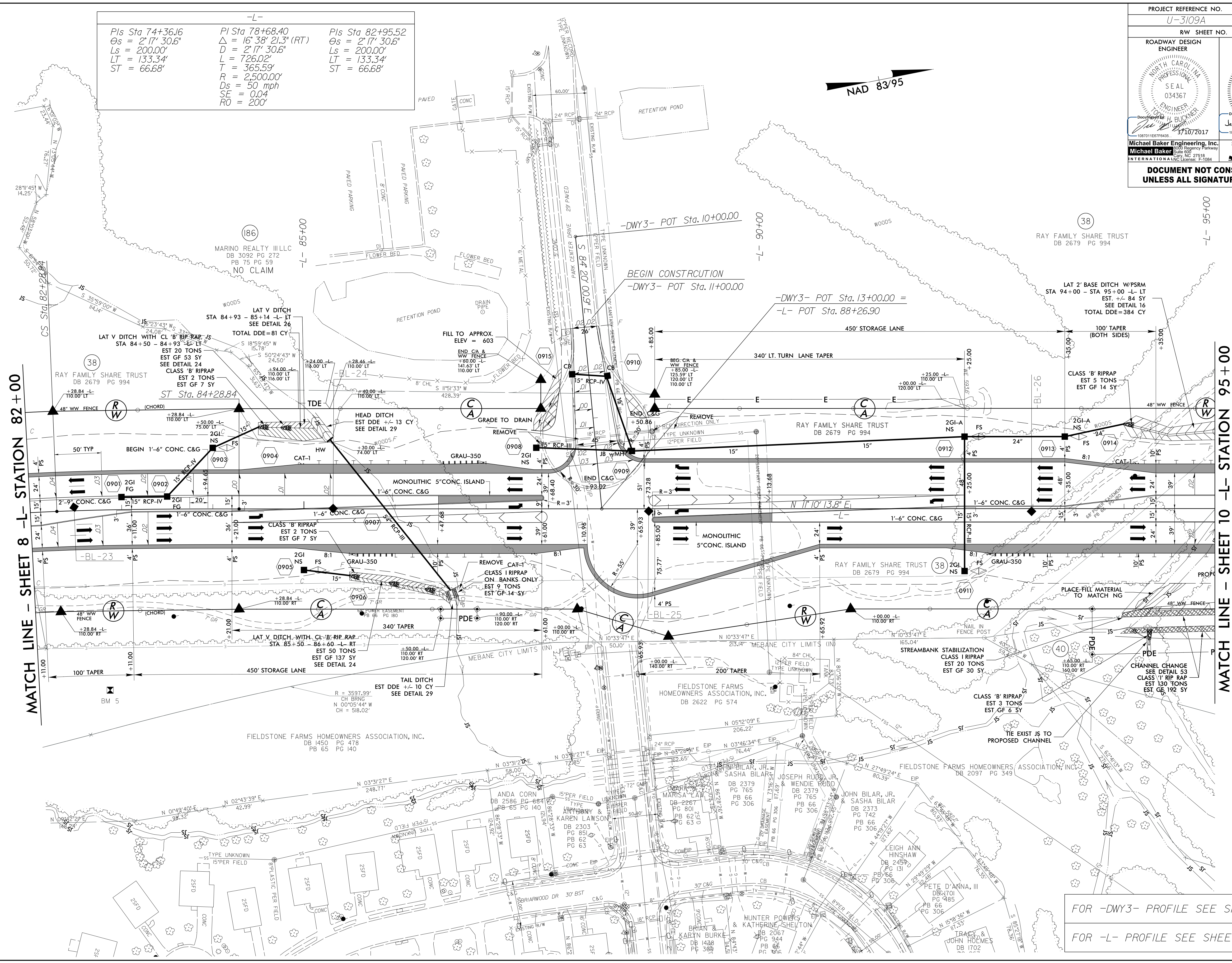


PROJECT REFERENCE NO. U-3109A		SHEET NO. 9	
RW SHEET NO.			
ROADWAY DESIGN ENGINEER		HYDRAULICS ENGINEER	
Michael Baker Engineering, Inc. 10000 Regency Parkway Suite 600 Raleigh, NC 27618 INTERNATIONAL License: F-1084		SUNGATE DESIGN GROUP, P.A. 915 Jones Franklin Road Raleigh, NC 27608 NC COA No. C-0890	
DOCUMENT NOT CONSIDERED FINAL UNLESS ALL SIGNATURES COMPLETED			

-L-

Pls Sta 74+36.6	Pls Sta 78+68.40	Pls Sta 82+95.52
$\Delta = 2' 17" 30.6"$	$\Delta = 16' 38" 21.3" (RT)$	$\Delta = 2' 17" 30.6"$
$L_s = 200.00'$	$D = 2' 17" 30.6"$	$L_s = 200.00'$
$LT = 133.34'$	$L = 726.02'$	$LT = 133.34'$
$ST = 66.68'$	$T = 365.59'$	$ST = 66.68'$
	$R = 2,500.00'$	
	$D_s = 50 \text{ mph}$	
	$SE = 0.04$	
	$RO = 200'$	



MATCH LINE - SHEET 8 - L- STATION 82+00

MATCH LINE - SHEET 10 - L- STATION 95+00

FOR -DWY3- PROFILE SEE SHEET 55
FOR -L- PROFILE SEE SHEETS 34 & 35

REVISIONS

2/27/2017 11:33:08 PM
USER: toddrucker