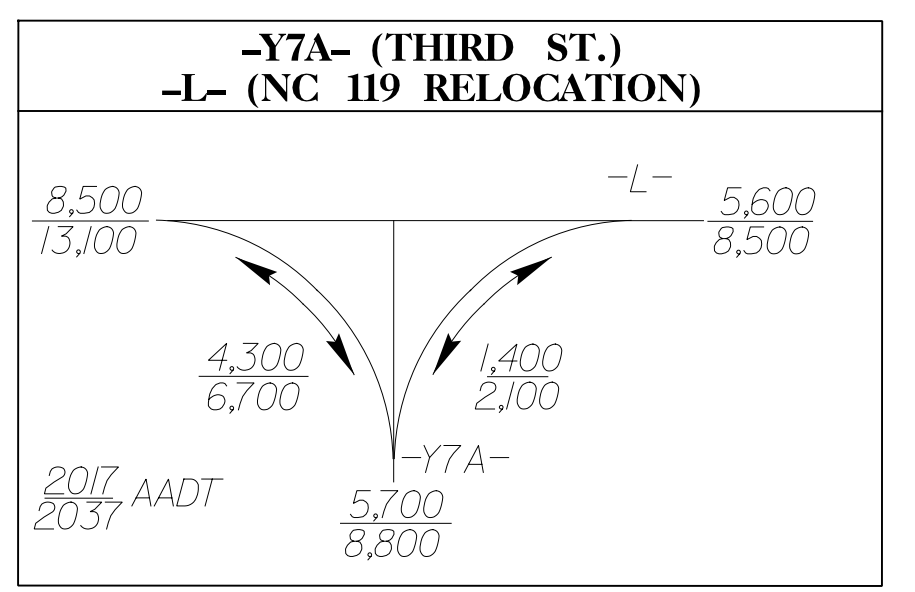
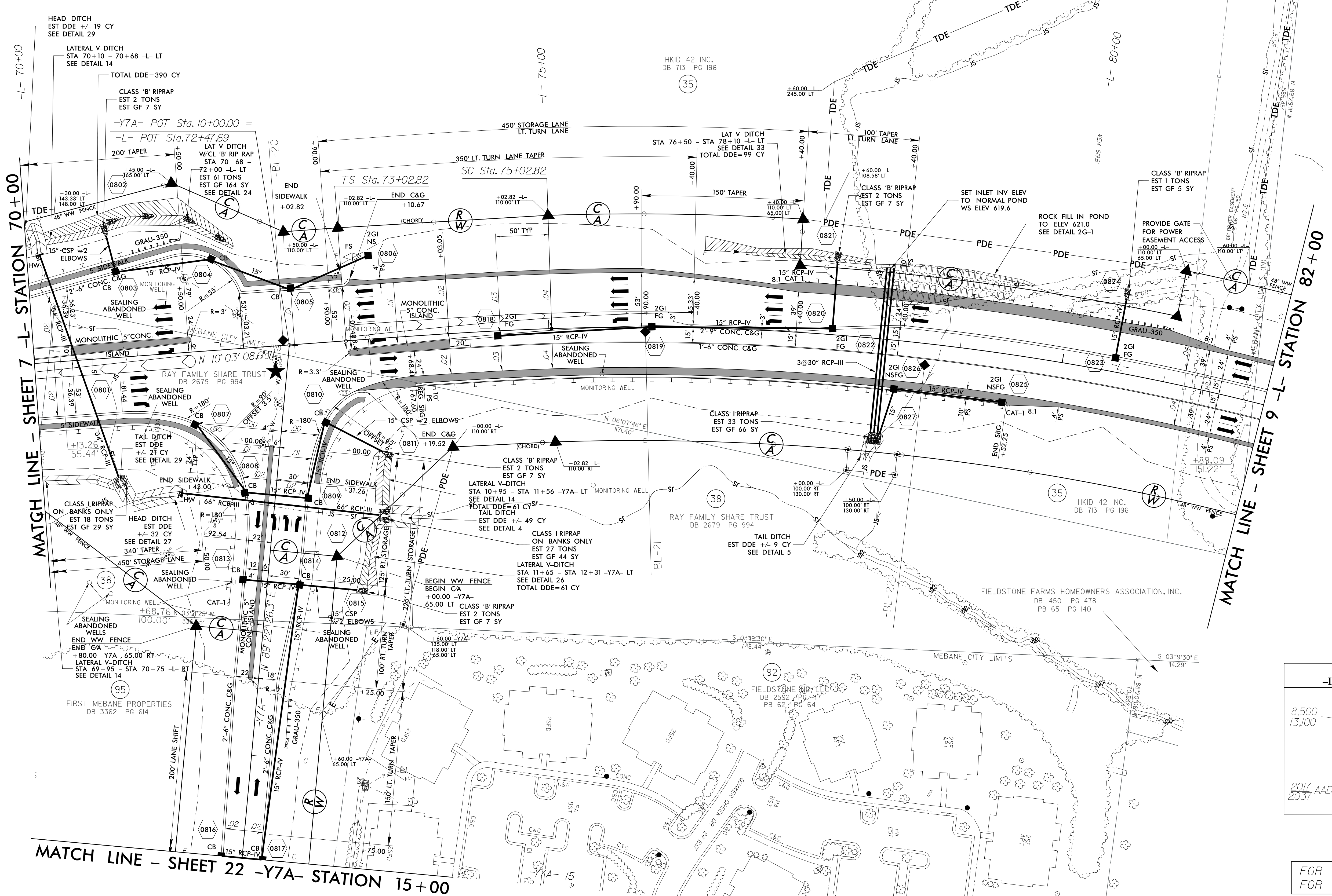


5/14/99

NAD 83/95

-L-		
Pls Sta 74+36.16	Pls Sta 78+68.40	Pls Sta 82+95.52
$\theta_s = 2'17''30.6''$	$\Delta = 16'38''21.3''$ (RT)	$\theta_s = 2'17''30.6''$
$L_s = 200.00'$	$L = 726.02'$	$L_s = 200.00'$
$LT = 133.34'$	$T = 365.59'$	$LT = 133.34'$
$ST = 66.68'$	$R = 2,500.00'$	$ST = 66.68'$
	$D_s = 50$ mph	
	$SE = 0.04$	
	$RO = 200'$	

PROJECT REFERENCE NO. U-3109A	SHEET NO. 8
RW SHEET NO.	
ROADWAY DESIGN ENGINEER	HYDRAULICS ENGINEER
Michael Baker Engineering, Inc. 10000 Regency Parkway Suite 600 Raleigh, NC 27618 INTERNATIONAL License: F-1084	SUNGATE DESIGN GROUP, P.A. 915 Jones Franklin Road Raleigh, NC 27609 NC COA No. G-0890
3/14/2017	3/14/2017
<b>DOCUMENT NOT CONSIDERED FINAL UNLESS ALL SIGNATURES COMPLETED</b>	



★ PROPOSED SIGNAL

FOR -L- PROFILE SEE SHEET 34  
FOR -Y7A- PROFILE SEE SHEET 47

REVISIONS

3/14/2017 4:24:10 PM U:\3109A\_r.dwg\_psh\_b.dgn  
USER: bobdubuck