

PROJECT REFERENCE NO. U-3109A		SHEET NO. 7	
RW SHEET NO.			
ROADWAY DESIGN ENGINEER		HYDRAULICS ENGINEER	
Michael Baker Engineering, Inc. 10000 Regency Parkway Suite 600 Raleigh, NC 27618 INTERNATIONAL License: F-1084		SUNGATE DESIGN GROUP, P.A. 915 Jones Franklin Road Raleigh, NC 27608 NC COA No. G-0890	
<b>DOCUMENT NOT CONSIDERED FINAL UNLESS ALL SIGNATURES COMPLETED</b>			

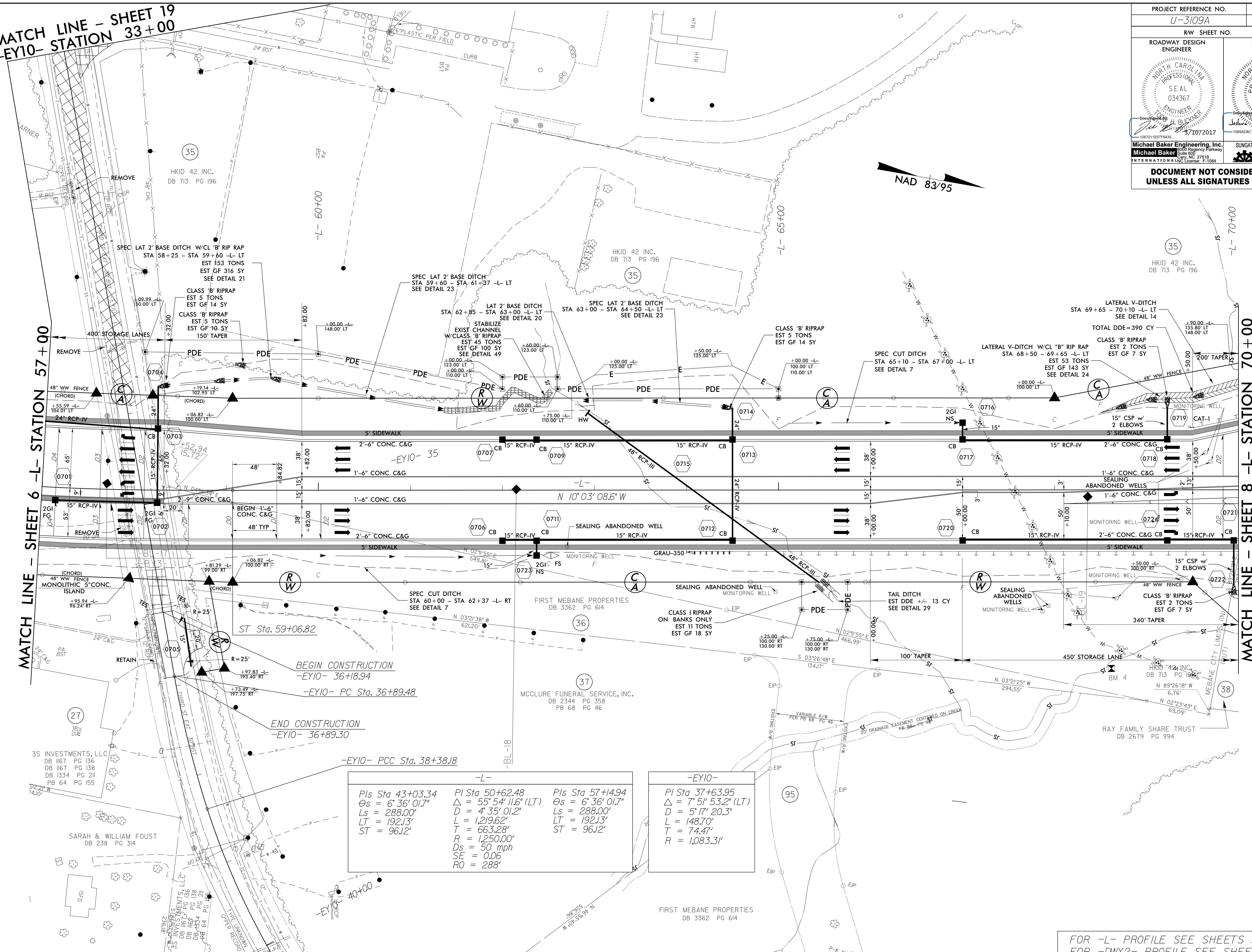
MATCH LINE - SHEET 19  
-EY10- STATION 33+00

MATCH LINE - SHEET 6 -L- STATION 57+00

MATCH LINE - SHEET 8 -L- STATION 70+00

REVISIONS

NAD 83/95



-L-		
PI Sta 43+03.34	PI Sta 50+62.48	PI Sta 57+14.94
$\Delta s = 6' 36'' 01.7''$	$\Delta = 55' 54'' 11.6''$ (LT)	$\Delta s = 6' 36'' 01.7''$
$Ls = 288.00'$	$D = 4' 35'' 01.2''$	$Ls = 288.00'$
$LT = 192.13'$	$L = 1,219.62'$	$LT = 192.13'$
$ST = 96.12'$	$T = 663.28'$	$ST = 96.12'$
	$R = 1,250.00'$	
	$Ds = 50$ mph	
	$SE = 0.06$	
	$RO = 288'$	

-EY10-	
PI Sta 37+63.95	$\Delta = 7' 51'' 53.2''$ (LT)
	$D = 5' 17'' 20.3''$
	$L = 148.70'$
	$T = 74.47'$
	$R = 1,083.31'$

FOR -L- PROFILE SEE SHEETS 33 & 34  
FOR -DWY2- PROFILE SEE SHEET 54

2/24/2017 11:32:37 AM U:\3109A\_rdy.psh\_7.dgn  
USER: toddbuckner