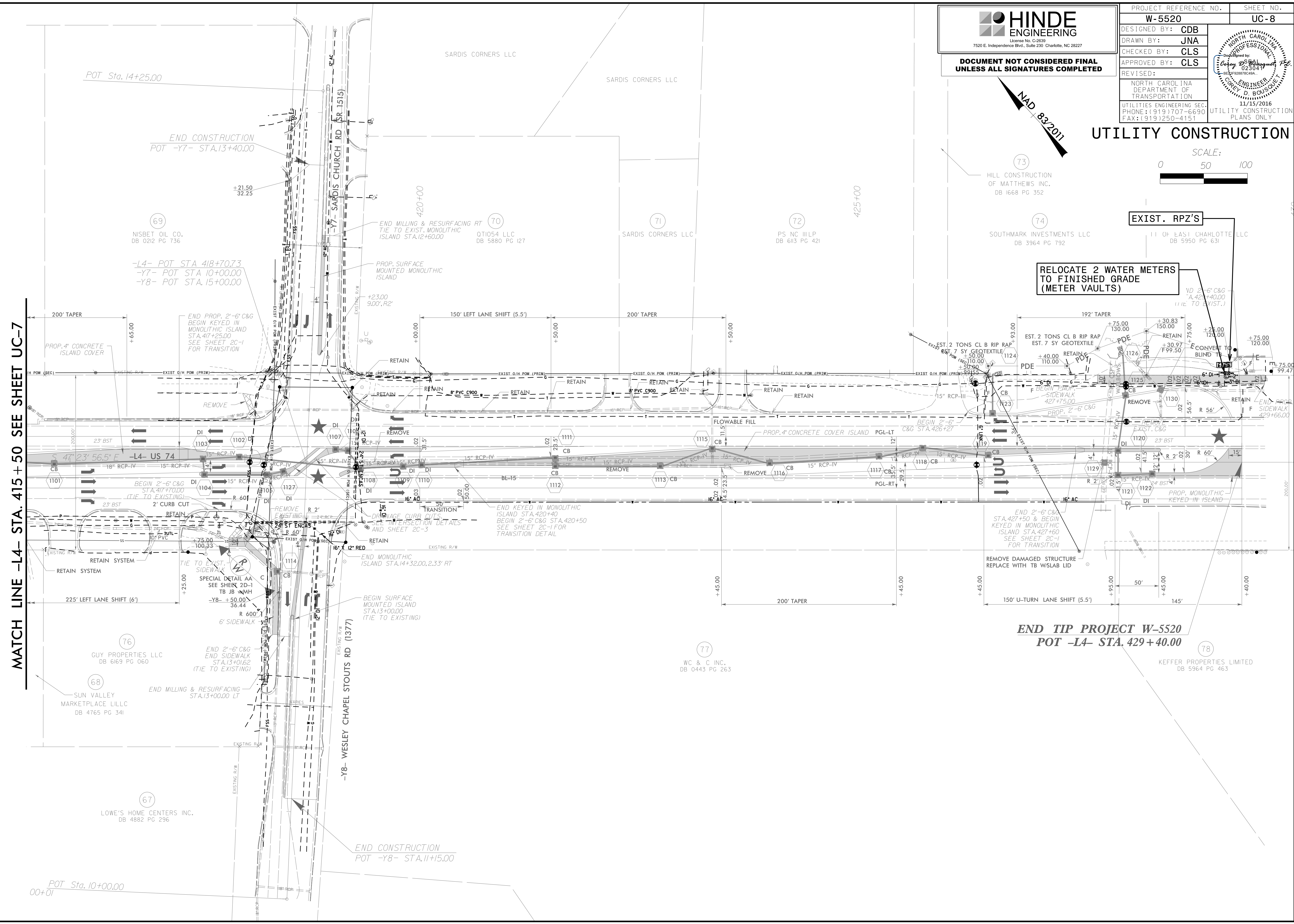


**HINDE ENGINEERING**  
 License No. C-2639  
 7520 E. Independence Blvd., Suite 230 Charlotte, NC 28227

**DOCUMENT NOT CONSIDERED FINAL  
 UNLESS ALL SIGNATURES COMPLETED**

PROJECT REFERENCE NO. <b>W-5520</b>	SHEET NO. <b>UC-8</b>
DESIGNED BY: <b>CDB</b>	
DRAWN BY: <b>JNA</b>	
CHECKED BY: <b>CLS</b>	
APPROVED BY: <b>CLS</b>	
REVISED:	
NORTH CAROLINA DEPARTMENT OF TRANSPORTATION UTILITIES ENGINEERING SEC. PHONE: (919) 707-6690 FAX: (919) 250-4151 UTILITY CONSTRUCTION PLANS ONLY	

**UTILITY CONSTRUCTION**



MATCH LINE -L4- STA. 415 + 50 SEE SHEET UC-7

**END TIP PROJECT W-5520  
 POT -L4- STA. 429 + 40.00**

POT Sta. 10+00.00  
 00+01

-L4- POT STA 418+70.73  
 -Y7- POT STA 10+00.00  
 -Y8- POT STA. 15+00.00

LOWE'S HOME CENTERS INC.  
 DB 4882 PG 296

SUN VALLEY MARKETPLACE LILLC  
 DB 4765 PG 341

GUY PROPERTIES LLC  
 DB 6169 PG 060

NISBET OIL CO.  
 DB 0212 PG 736

POT Sta. 14+25.00

END CONSTRUCTION  
 POT -Y8- STA. 11+15.00

BEGIN SURFACE MOUNTED ISLAND  
 STA. 13+00.00 (TIE TO EXISTING)

END MONOLITHIC ISLAND STA. 14+32.00, 2.33' RT

END KEYED IN MONOLITHIC ISLAND STA. 420+40  
 BEGIN 2'-6" C&G STA. 420+50  
 SEE SHEET 2C-1 FOR TRANSITION DETAIL

END PROP. 2'-6" C&G BEGIN KEYED IN MONOLITHIC ISLAND STA. 417+25.00  
 SEE SHEET 2C-1 FOR TRANSITION

END MILLING & RESURFACING RT TIE TO EXIST. MONOLITHIC ISLAND STA. 12+60.00

END CONSTRUCTION  
 POT -Y7- STA. 13+40.00

I:\5-NOV-2016 10:48 AM\PROJECTS\2013\A2013114.00 DRMP - W-5520 - IndonTrail-US 74\Design\Utilities\Engineering\UC\ProJ\W5520\_ut\_rduj1\_UC08\_psh.dgn