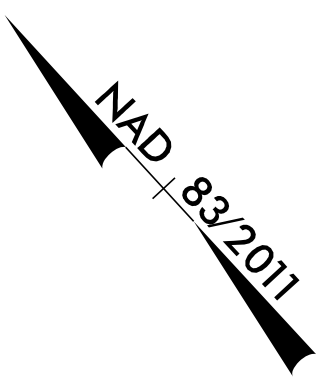
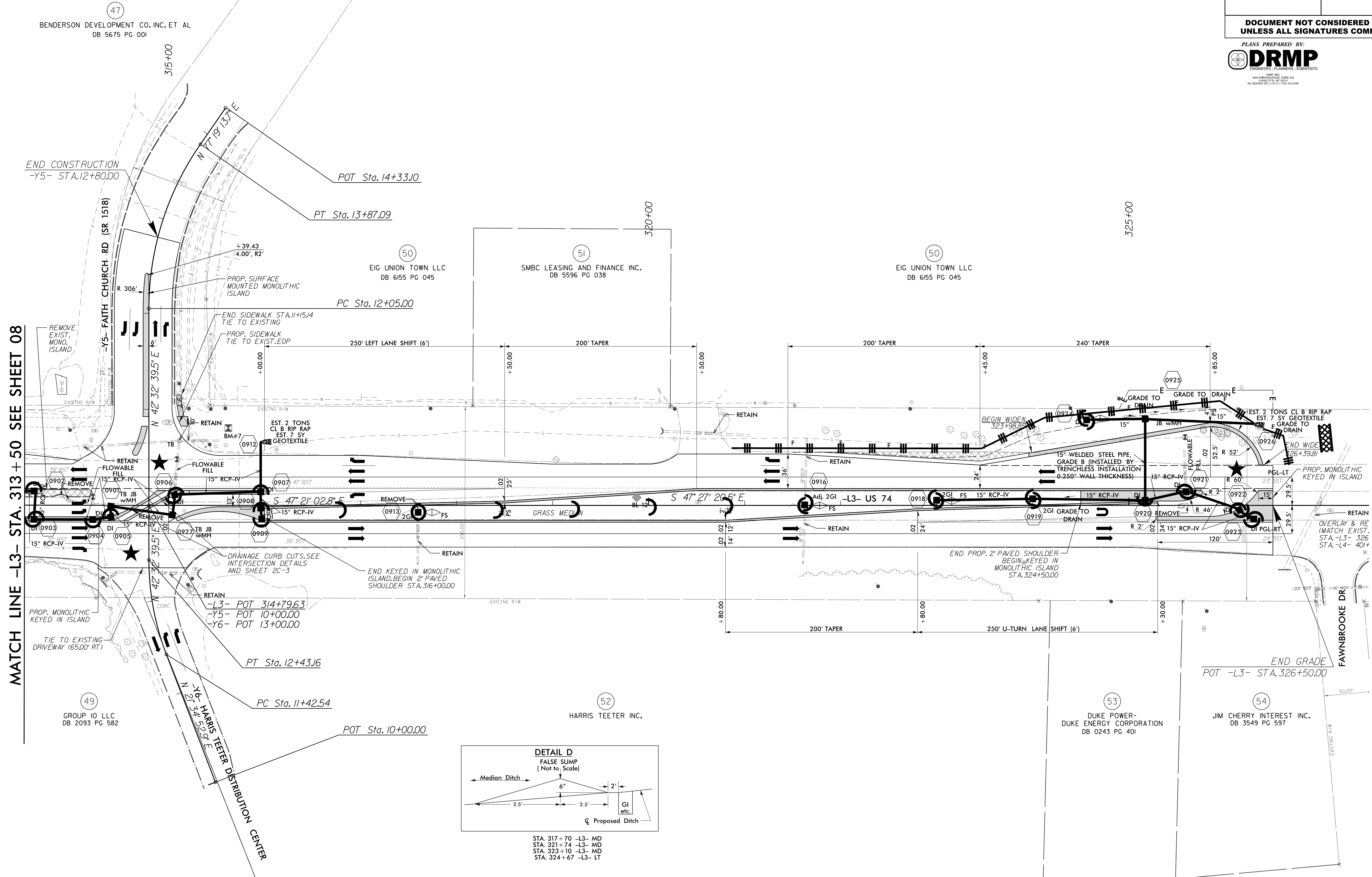


PROJECT REFERENCE NO.	SHEET NO.
W-5520	EC-17/CONST.09
R/W SHEET NO.	09
ROADWAY DESIGN ENGINEER	HYDRAULICS ENGINEER

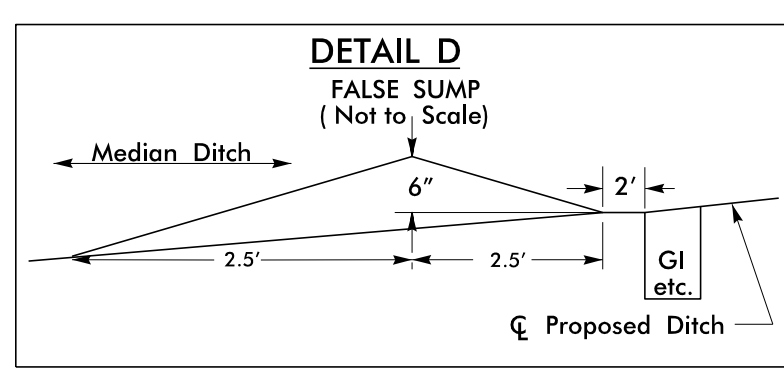
DOCUMENT NOT CONSIDERED FINAL UNLESS ALL SIGNATURES COMPLETED



-Y5-	-Y6-
PI Sta 12+98.95	PI Sta 11+93.42
$\Delta = 34' 46'' 34.2''$ (RT)	$\Delta = 20' 57'' 46.6''$ (RT)
$D = 19' 05'' 54.9''$	$D = 20' 50'' 05.4''$
$L = 182.09'$	$L = 100.61'$
$T = 93.95'$	$T = 50.88'$
$R = 300.00'$	$R = 275.00'$
$e =$ EXISTING	$e =$ EXISTING



MATCH LINE -L3- STA. 313 + 50 SEE SHEET 08



STA. 317+70 -L3- MD
 STA. 321+74 -L3- MD
 STA. 323+10 -L3- MD
 STA. 324+67 -L3- LT

REVISIONS

8/17/99
 I:\3\2017
 N:\Environmental\Design\W5520_EC_pah_09.dgn