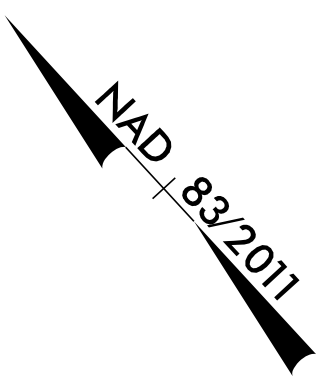


PROJECT REFERENCE NO.	SHEET NO.
W-5520	EC-16/CONST.08
R/W SHEET NO.	08
ROADWAY DESIGN ENGINEER	HYDRAULICS ENGINEER

**DOCUMENT NOT CONSIDERED FINAL
UNLESS ALL SIGNATURES COMPLETED**



-L3-
 PI Sta. 302+91.84
 $\Delta = 5' 18' 16.6" (LT)$
 $D = 0' 54' 34.0"$
 $L = 583.27'$
 $T = 291.84'$
 $R = 6,300.00'$
 e = EXISTING

LOVE, JESSIE EUGENE
 & DWIGHT AUGUSTUS
 DB 540/PG 821

PEBBLE CREEK ASSOCIATES

PEBBLE CREEK ASSOCIATES

(47)
 BENDERSON DEVELOPMENT CO. INC. ET AL
 DB 5675 PG 001

(46)
 DOROTHY HALL PROPERTIES LLC

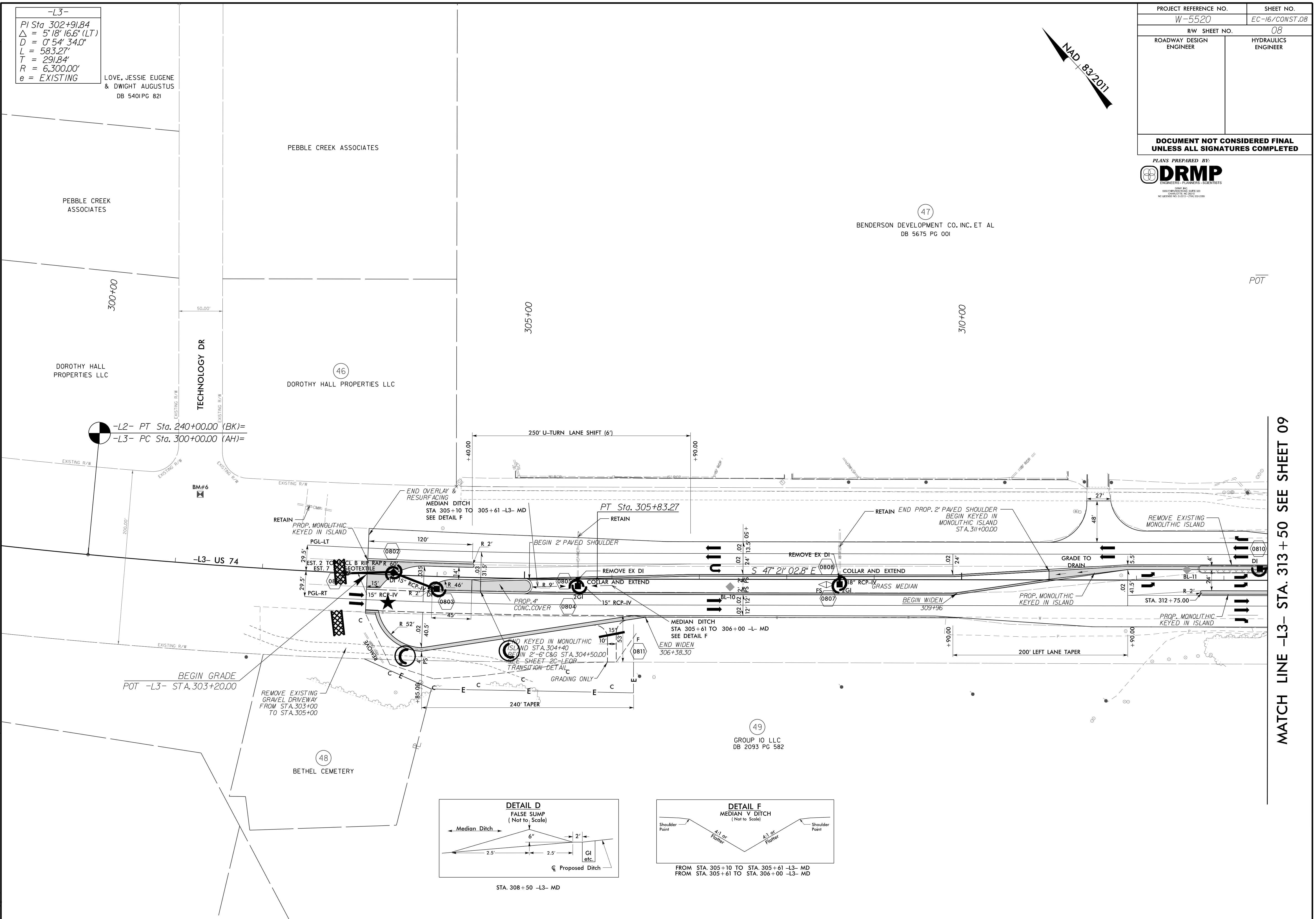
DOROTHY HALL PROPERTIES LLC

(48)
 BETHEL CEMETERY

REVISIONS

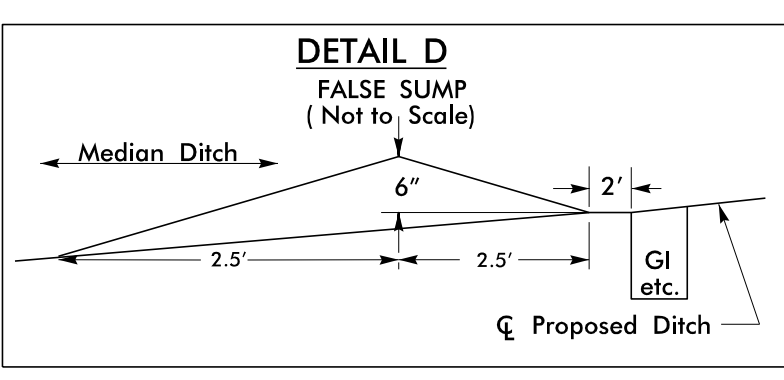
8/17/99

I:\3\2017
 N:\Environmental\Design\W5520_EC_pah_08.dgn

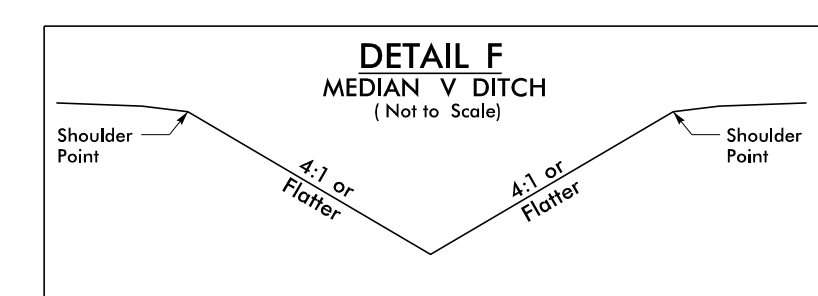


-L2- PT Sta. 240+00.00 (BK)=
 -L3- PC Sta. 300+00.00 (AH)=

BEGIN GRADE
 POT -L3- STA. 303+20.00



STA. 308+50 -L3- MD



FROM STA. 305+10 TO STA. 305+61 -L3- MD
 FROM STA. 305+61 TO STA. 306+00 -L3- MD

MATCH LINE -L3- STA. 313+50 SEE SHEET 09