

-DRVI-
 PI Sta 5+66.13
 $\Delta = 46^\circ 57' 34.3" (RT)$
 $D = 79' 34' 38.9"$
 $L = 59.0'$
 $T = 31.28'$
 $R = 72.00'$
 e = EXISTING

PROJECT REFERENCE NO.	SHEET NO.
W-5520	EC-14/CONST.06
RW SHEET NO.	06
ROADWAY DESIGN ENGINEER	HYDRAULICS ENGINEER

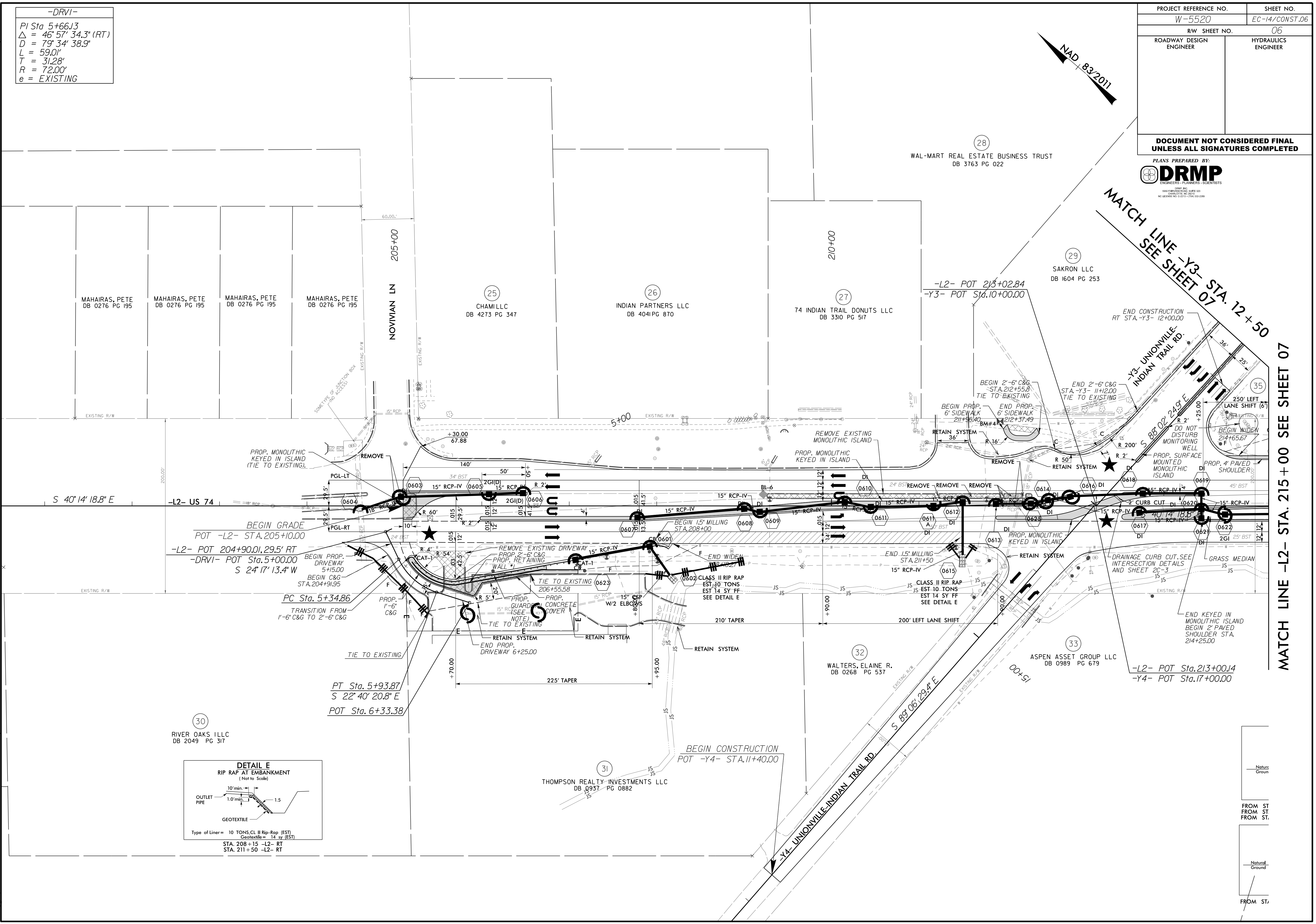
DOCUMENT NOT CONSIDERED FINAL
 UNLESS ALL SIGNATURES COMPLETED



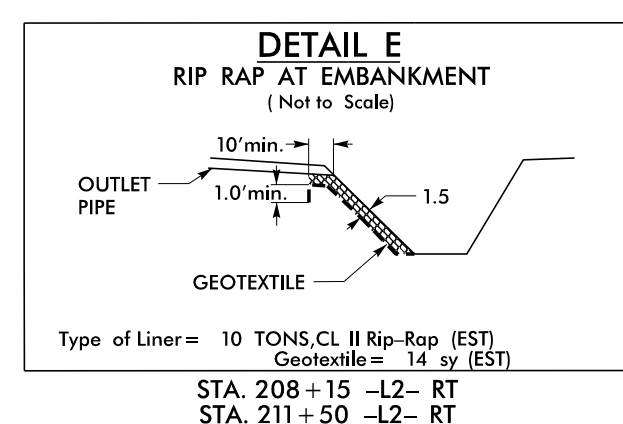
MATCH LINE -Y3- STA. 12+50
 SEE SHEET 07

MATCH LINE -L2- STA. 215+00 SEE SHEET 07

REVISIONS



30 RIVER OAKS I LLC
 DB 2049 PG 317



Natural Ground
 FROM ST
 FROM ST
 FROM ST

8/17/99
 I:\3\2017\N:\Environmental\Design\W5520\EC_pah_06.dgn
 8/17/2017