

PROJECT REFERENCE NO.	SHEET NO.
W-5520	EC-II/CONST.II
R/W SHEET NO.	II
ROADWAY DESIGN ENGINEER	HYDRAULICS ENGINEER

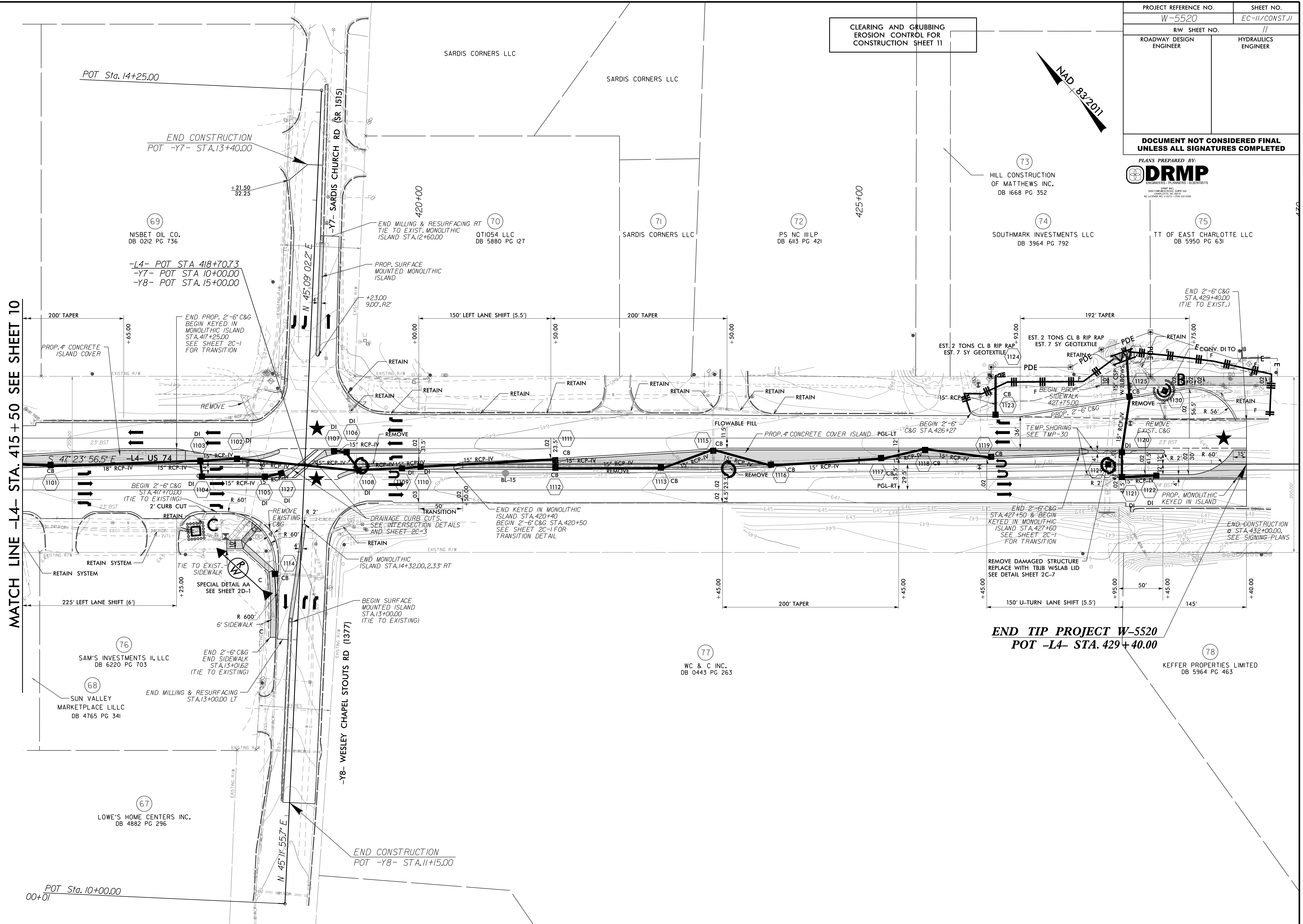
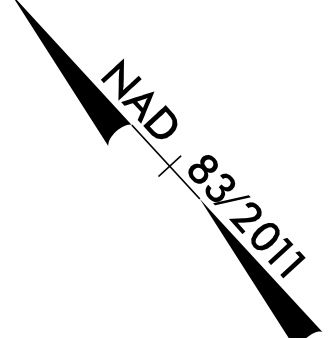
DOCUMENT NOT CONSIDERED FINAL UNLESS ALL SIGNATURES COMPLETED

PLANS PREPARED BY:



DRMP
ENGINEERS - PLANNERS - SCIENTISTS
1600 PARKWAY DRIVE, SUITE 300
CHARLOTTE, NC 28203
NC LICENSE NO. C-20174 / 1746-300-0389

CLEARING AND GRUBBING
EROSION CONTROL FOR
CONSTRUCTION SHEET 11



MATCH LINE -L4- STA. 415+50 SEE SHEET 10

**END TIP PROJECT W-5520
POT -L4- STA. 429+40.00**

REVISIONS

8/17/99

I:\3\2017
N:\Environmental\Design\W5520_EC_pah_11.dgn
11/1/2017

POT Sta. 10+00.00
00+01

(69)
NISBET OIL CO.
DB 0212 PG 736

(70)
OT1054 LLC
DB 5880 PG 127

(71)
SARDIS CORNERS LLC

(72)
PS NC III LP
DB 6113 PG 421

(73)
HILL CONSTRUCTION
OF MATTHEWS INC.
DB 1668 PG 352

(74)
SOUTHMARK INVESTMENTS LLC
DB 3964 PG 792

(75)
TT OF EAST CHARLOTTE LLC
DB 5950 PG 631

(76)
SAM'S INVESTMENTS II, LLC
DB 6220 PG 703

(68)
SUN VALLEY
MARKETPLACE L'LLC
DB 4765 PG 341

(67)
LOWE'S HOME CENTERS INC.
DB 4882 PG 296

(77)
WC & C INC.
DB 0443 PG 263

(78)
KEFFER PROPERTIES LIMITED
DB 5964 PG 463