

-L3-  
 PI Sta. 302+91.84  
 $\Delta = 5' 18' 16.6" (LT)$   
 $D = 0' 54' 34.0"$   
 $L = 583.27'$   
 $T = 291.84'$   
 $R = 6,300.00'$   
 $e = EXISTING$

LOVE, JESSIE EUGENE  
 & DWIGHT AUGUSTUS  
 DB 540/PG 821

CLEARING AND GRUBBING  
 EROSION CONTROL FOR  
 CONSTRUCTION SHEET 08

PROJECT REFERENCE NO. W-5520	SHEET NO. EC-08/CONST.08
ROADWAY DESIGN ENGINEER	HYDRAULICS ENGINEER

DOCUMENT NOT CONSIDERED FINAL  
 UNLESS ALL SIGNATURES COMPLETED



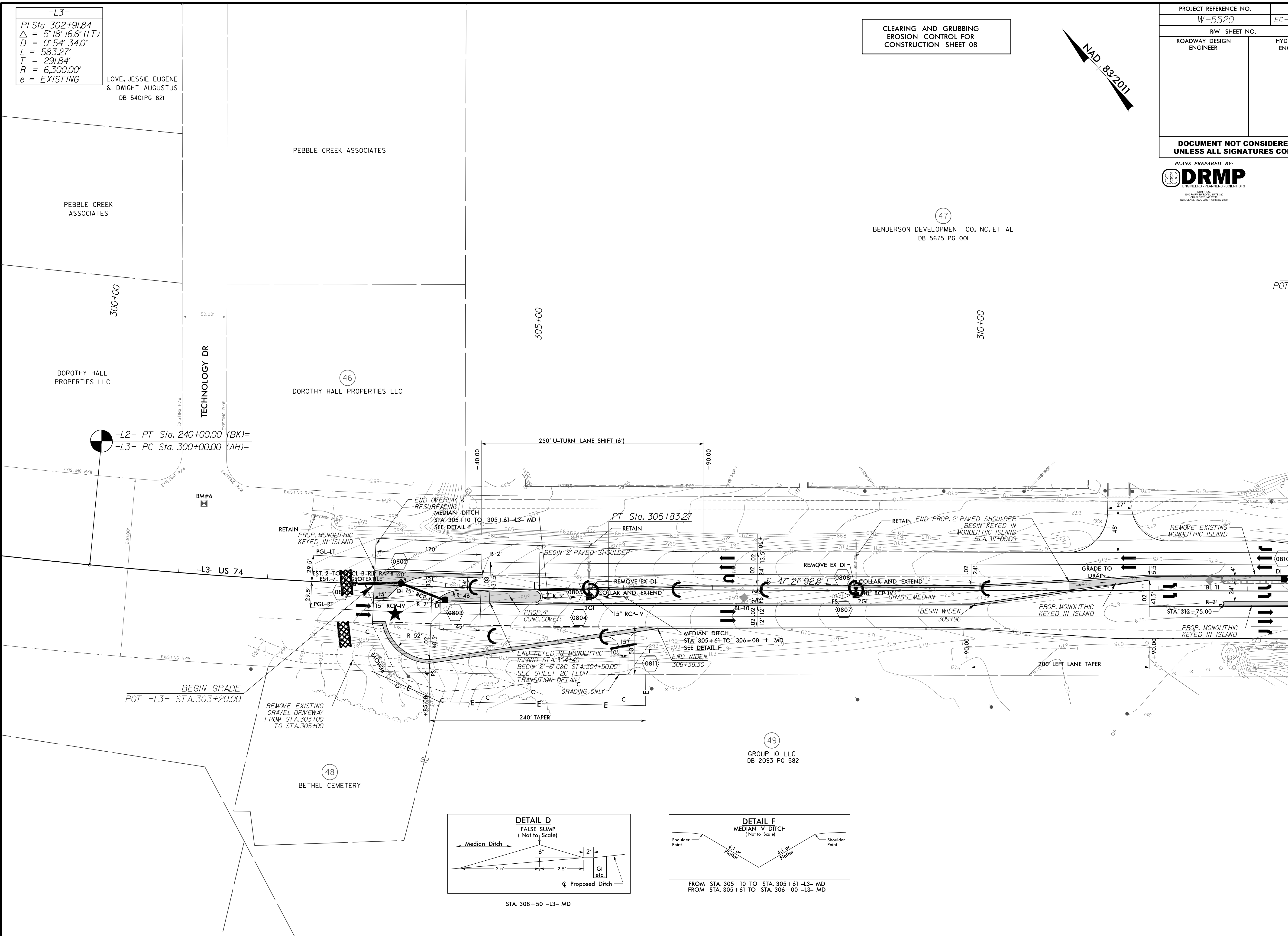
(47)  
 BENDERSON DEVELOPMENT CO. INC. ET AL  
 DB 5675 PG 001

REVISIONS

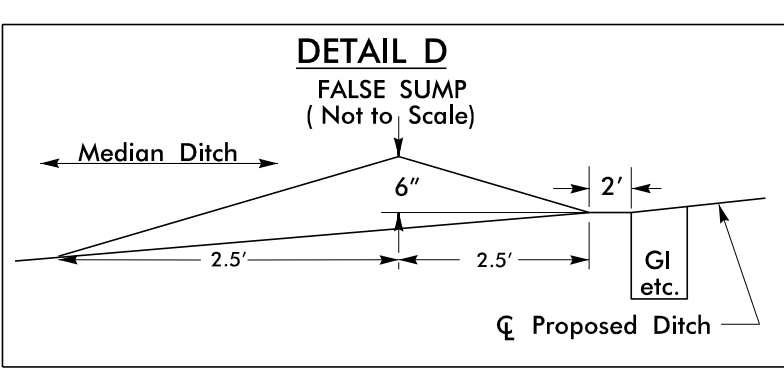
MATCH LINE -L3- STA. 313 + 50 SEE SHEET 09

8/17/99

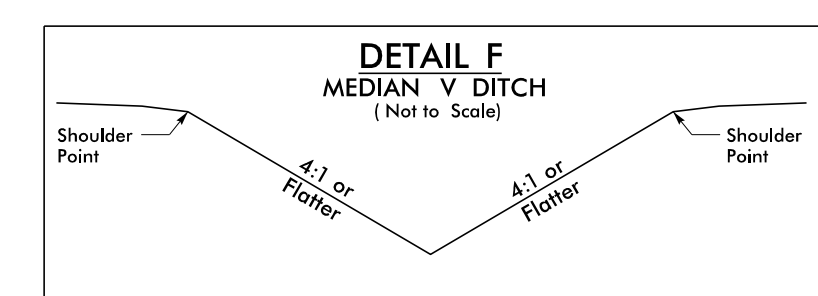
I:\3\2017  
 N:\Environmental\Design\W5520\EC\_pah\_08.dgn



-L2- PT Sta. 240+00.00 (BK)=  
 -L3- PC Sta. 300+00.00 (AH)=



STA. 308 + 50 -L3- MD



FROM STA. 305 + 10 TO STA. 305 + 61 -L3- MD  
 FROM STA. 305 + 61 TO STA. 306 + 00 -L3- MD