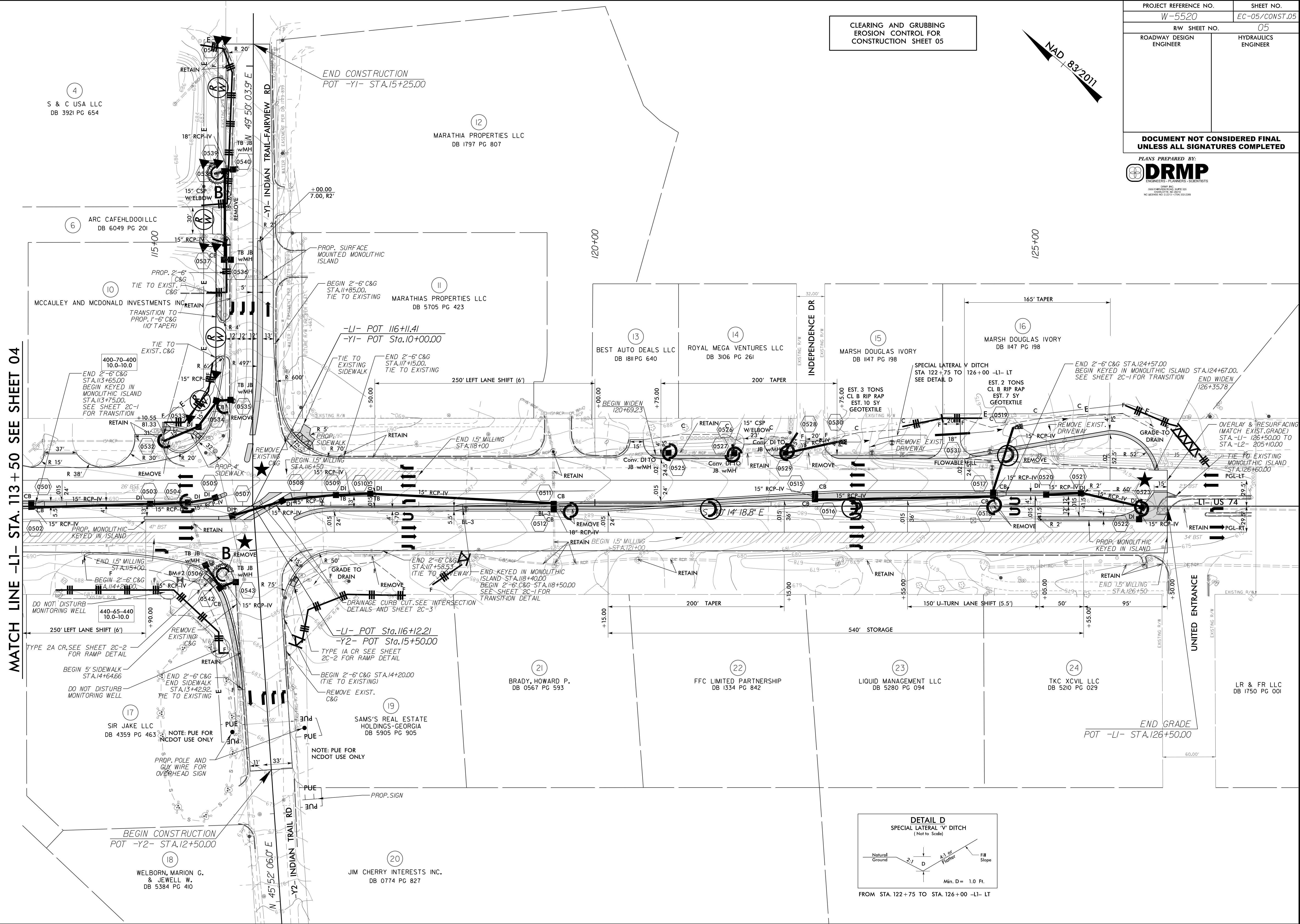


8/17/99
 REVISIONS
 1/3/2017
 N:\Environmental\Design\W5520_EC_pah_05.dgn
 05/11/2017



CLEARING AND GRUBBING
 EROSION CONTROL FOR
 CONSTRUCTION SHEET 05



PROJECT REFERENCE NO.	SHEET NO.
W-5520	EC-05/CONST.05
ROADWAY DESIGN ENGINEER	HYDRAULICS ENGINEER
	05

DOCUMENT NOT CONSIDERED FINAL
 UNLESS ALL SIGNATURES COMPLETED

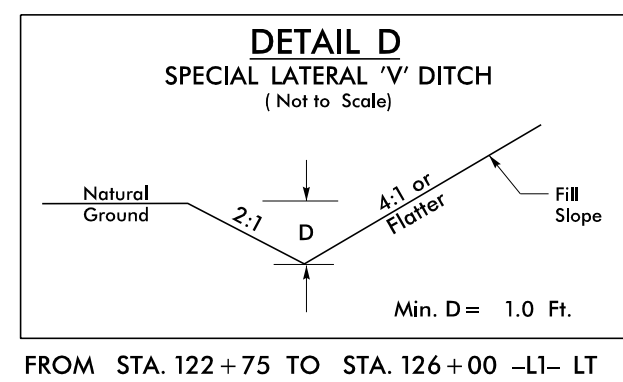
PLANS PREPARED BY:
DRMP
 ENGINEERS - PLANNERS - SCIENTISTS

MATCH LINE -L1- STA. 113+50 SEE SHEET 04

BEGIN CONSTRUCTION
 POT -Y2- STA.12+50.00

END CONSTRUCTION
 POT -Y1- STA.15+25.00

END GRADE
 POT -L1- STA.126+50.00



4
 S & C USA LLC
 DB 3921 PG 654

12
 MARATHIA PROPERTIES LLC
 DB 1797 PG 807

6
 ARC CAFEHLD001LLC
 DB 6049 PG 201

10
 MCCAULEY AND MCDONALD INVESTMENTS INC

11
 MARATHIAS PROPERTIES LLC
 DB 5705 PG 423

13
 BEST AUTO DEALS LLC
 DB 1811 PG 640

14
 ROYAL MEGA VENTURES LLC
 DB 3106 PG 261

15
 MARSH DOUGLAS IVORY
 DB 1147 PG 198

16
 MARSH DOUGLAS IVORY
 DB 1147 PG 198

21
 BRADY, HOWARD P.
 DB 0567 PG 593

22
 FFC LIMITED PARTNERSHIP
 DB 1334 PG 842

23
 LIQUID MANAGEMENT LLC
 DB 5280 PG 094

24
 TKC XCVIL LLC
 DB 5210 PG 029

17
 SIR JAKE LLC
 DB 4359 PG 463

19
 SAMS'S REAL ESTATE HOLDINGS-GEORGIA
 DB 5905 PG 905

18
 WELBORN, MARION G. & JEWELL W.
 DB 5384 PG 410

20
 JIM CHERRY INTERESTS INC.
 DB 0774 PG 827