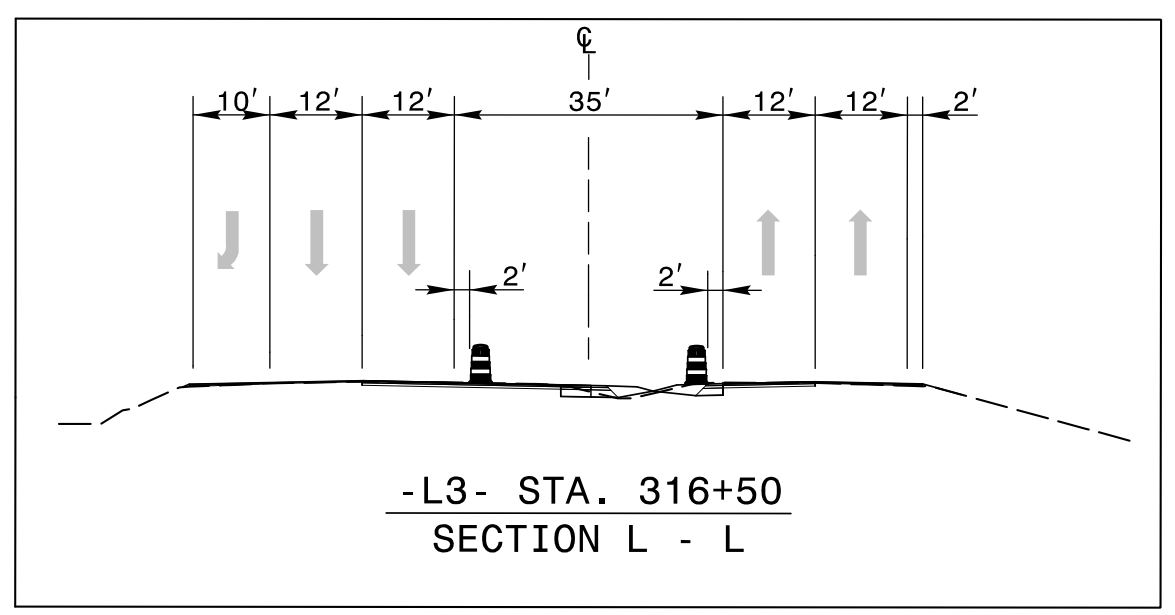
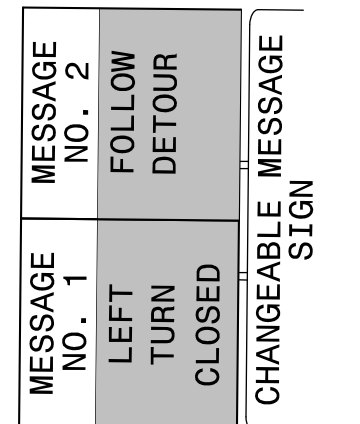
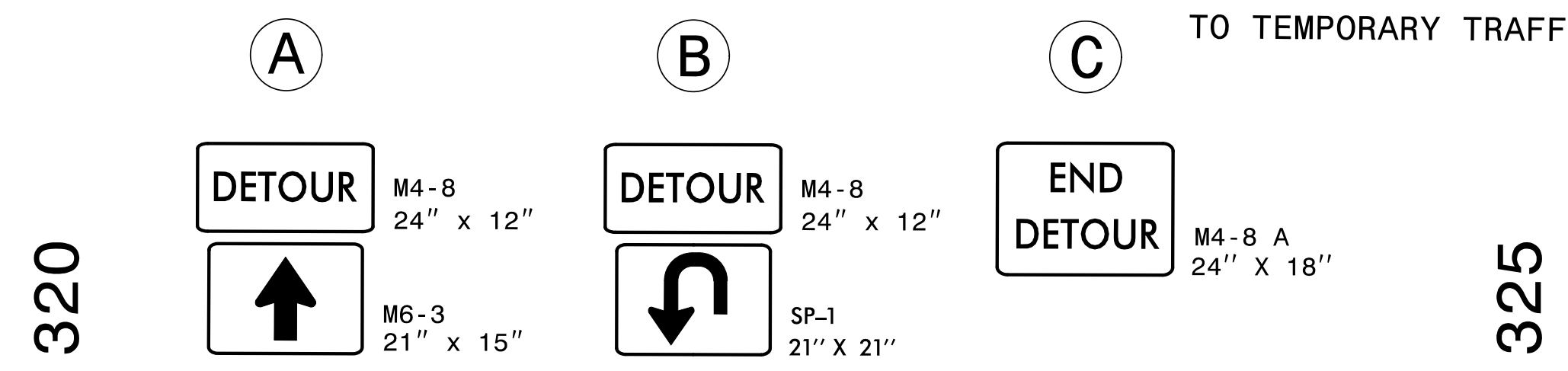
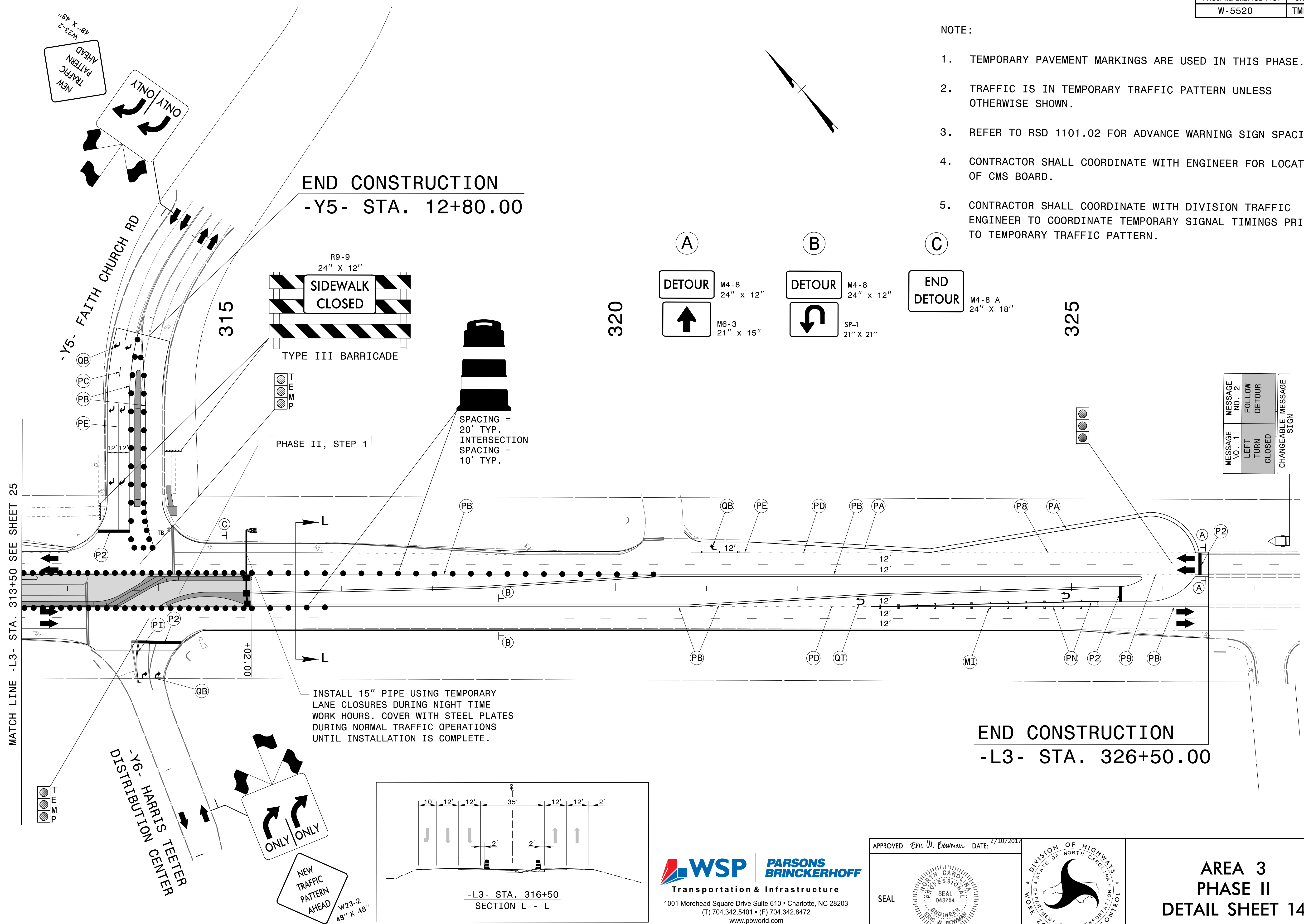


NOTE:

- TEMPORARY PAVEMENT MARKINGS ARE USED IN THIS PHASE.
- TRAFFIC IS IN TEMPORARY TRAFFIC PATTERN UNLESS OTHERWISE SHOWN.
- REFER TO RSD 1101.02 FOR ADVANCE WARNING SIGN SPACING.
- CONTRACTOR SHALL COORDINATE WITH ENGINEER FOR LOCATION OF CMS BOARD.
- CONTRACTOR SHALL COORDINATE WITH DIVISION TRAFFIC ENGINEER TO COORDINATE TEMPORARY SIGNAL TIMINGS PRIOR TO TEMPORARY TRAFFIC PATTERN.



INSTALL 15" PIPE USING TEMPORARY LANE CLOSURES DURING NIGHT TIME WORK HOURS. COVER WITH STEEL PLATES DURING NORMAL TRAFFIC OPERATIONS UNTIL INSTALLATION IS COMPLETE.

MATCH LINE -L3- STA. 313+50 SEE SHEET 25

END CONSTRUCTION
-L3- STA. 326+50.00

2/10/2017 4:41:55 PM U:\74\TrafficControl\TOP\W5520_TC_TMP_Area 3-Phase2-2.dgn USEB04421

WSP | **PARSONS BRINCKERHOFF**
 Transportation & Infrastructure
 1001 Morehead Square Drive Suite 610 • Charlotte, NC 28203
 (T) 704.342.5401 • (F) 704.342.8472
 www.pbworld.com
 NC License Number: F-0165

APPROVED: *Eric W. Bowman* DATE: 2/10/2017

SEAL

**AREA 3
PHASE II
DETAIL SHEET 14**