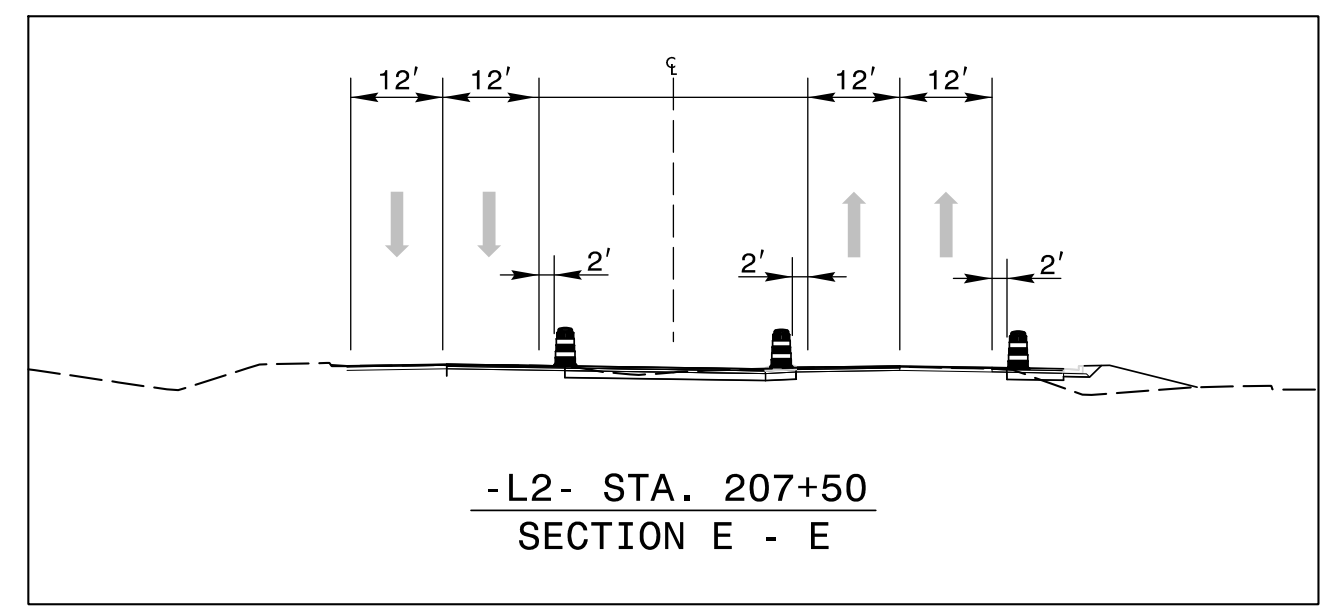
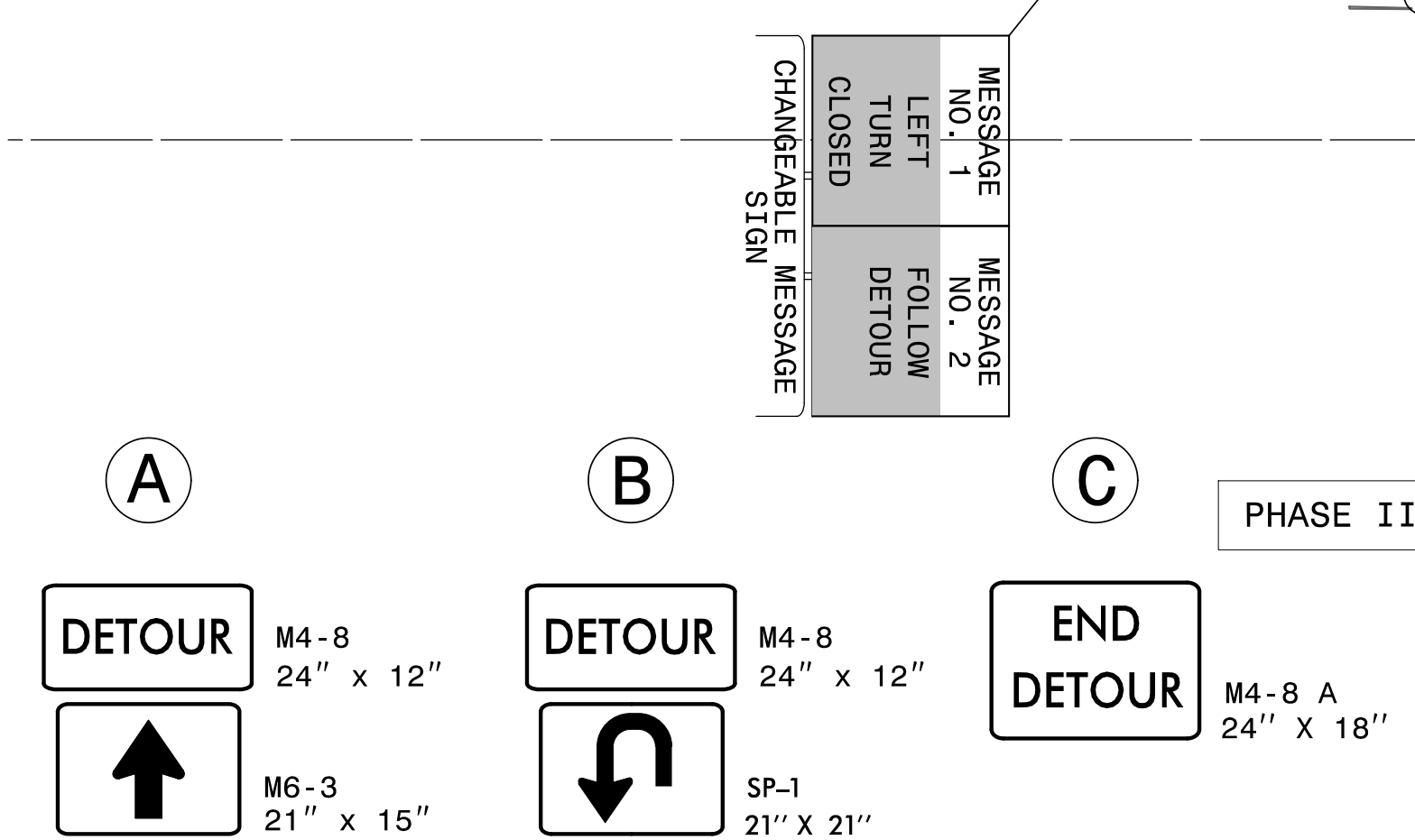
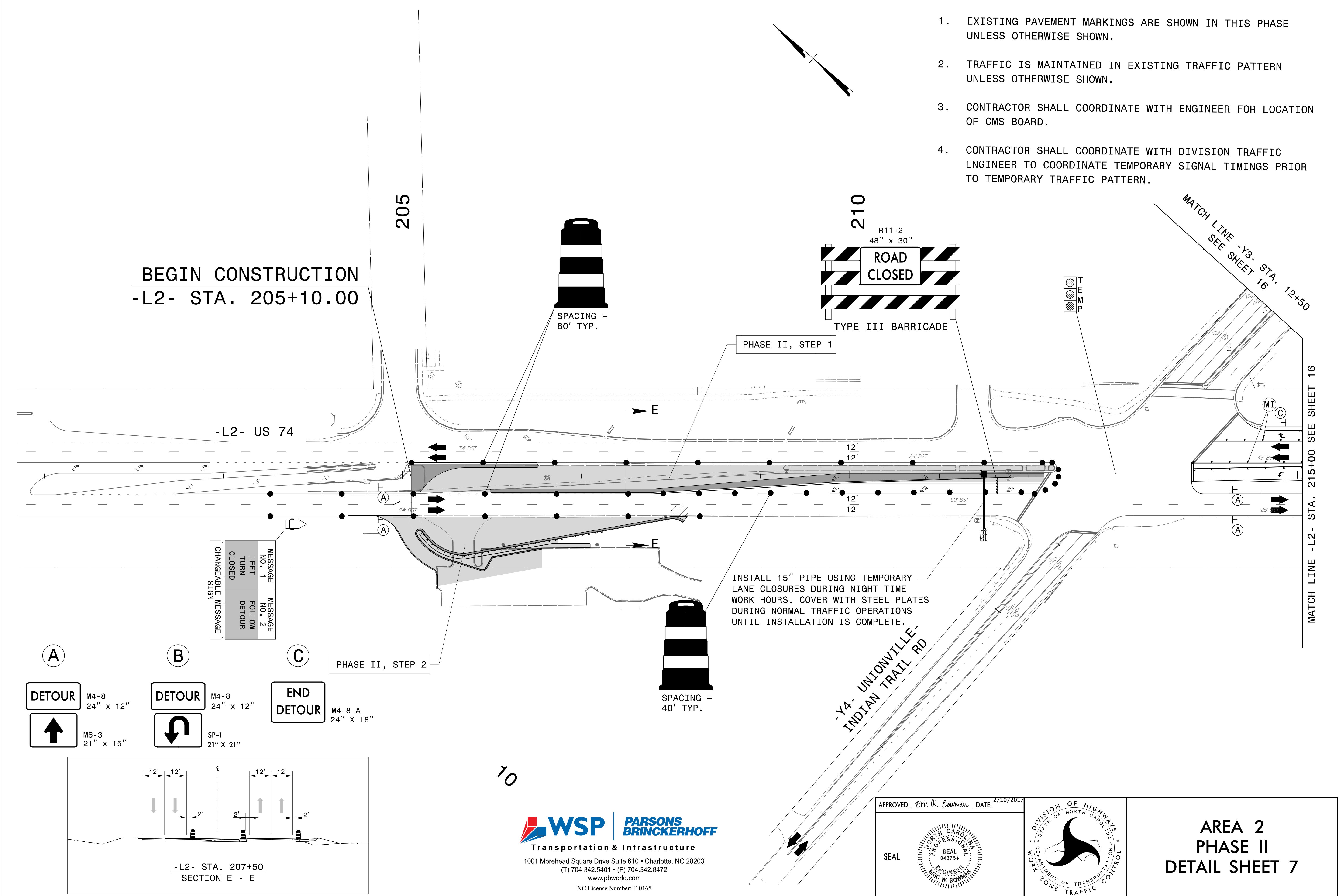


NOTE:

- EXISTING PAVEMENT MARKINGS ARE SHOWN IN THIS PHASE UNLESS OTHERWISE SHOWN.
- TRAFFIC IS MAINTAINED IN EXISTING TRAFFIC PATTERN UNLESS OTHERWISE SHOWN.
- CONTRACTOR SHALL COORDINATE WITH ENGINEER FOR LOCATION OF CMS BOARD.
- CONTRACTOR SHALL COORDINATE WITH DIVISION TRAFFIC ENGINEER TO COORDINATE TEMPORARY SIGNAL TIMINGS PRIOR TO TEMPORARY TRAFFIC PATTERN.



10

WSP | **PARSONS BRINCKERHOFF**
 Transportation & Infrastructure
 1001 Morehead Square Drive Suite 610 • Charlotte, NC 28203
 (T) 704.342.5401 • (F) 704.342.8472
 www.pbworld.com
 NC License Number: F-0165

APPROVED: *Eric W. Bowman* DATE: 2/10/2017

SEAL

**AREA 2
PHASE II
DETAIL SHEET 7**

2/10/2017 4:41:55 PM US74-TrafficControl\TOP\W5520_TC_TMP_Area 2-Phase2-ldgn USEB0442

MATCH LINE -L2- STA. 215+00 SEE SHEET 16