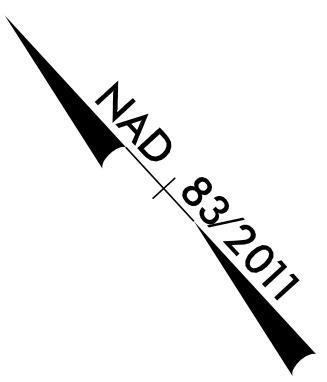


PROJECT REFERENCE NO. W-5520	SHEET NO. 08
ROADWAY DESIGN ENGINEER NORTH CAROLINA PROFESSIONAL SEAL JAMES E. BECK 2/2/2017	HYDRAULICS ENGINEER NORTH CAROLINA PROFESSIONAL SEAL RANA STANSELL 2/3/2017

DOCUMENT NOT CONSIDERED FINAL UNLESS ALL SIGNATURES COMPLETED

PLANS PREPARED BY:

DRMP ENGINEERS - PLANNERS - SCIENTISTS
WSP ENGINEERS - PLANNERS - SCIENTISTS



-L3-
 PI Sta. 302+91.84
 $\Delta = 5' 18'' 16.6'' (LT)$
 $D = 0' 54'' 34.0''$
 $L = 583.27'$
 $T = 291.84'$
 $R = 6,300.00'$
 $e = EXISTING$

LOVE, JESSIE EUGENE
 & DWIGHT AUGUSTUS
 DB 5401 PG 821

PEBBLE CREEK ASSOCIATES

PEBBLE CREEK ASSOCIATES

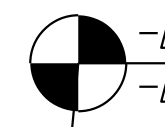
DOROTHY HALL PROPERTIES LLC

DOROTHY HALL PROPERTIES LLC

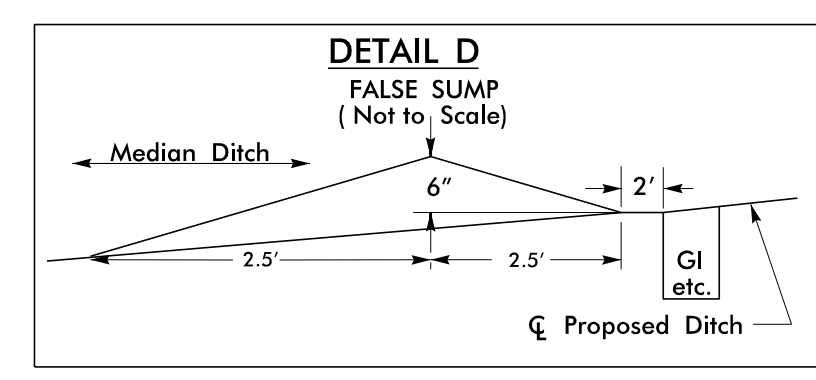
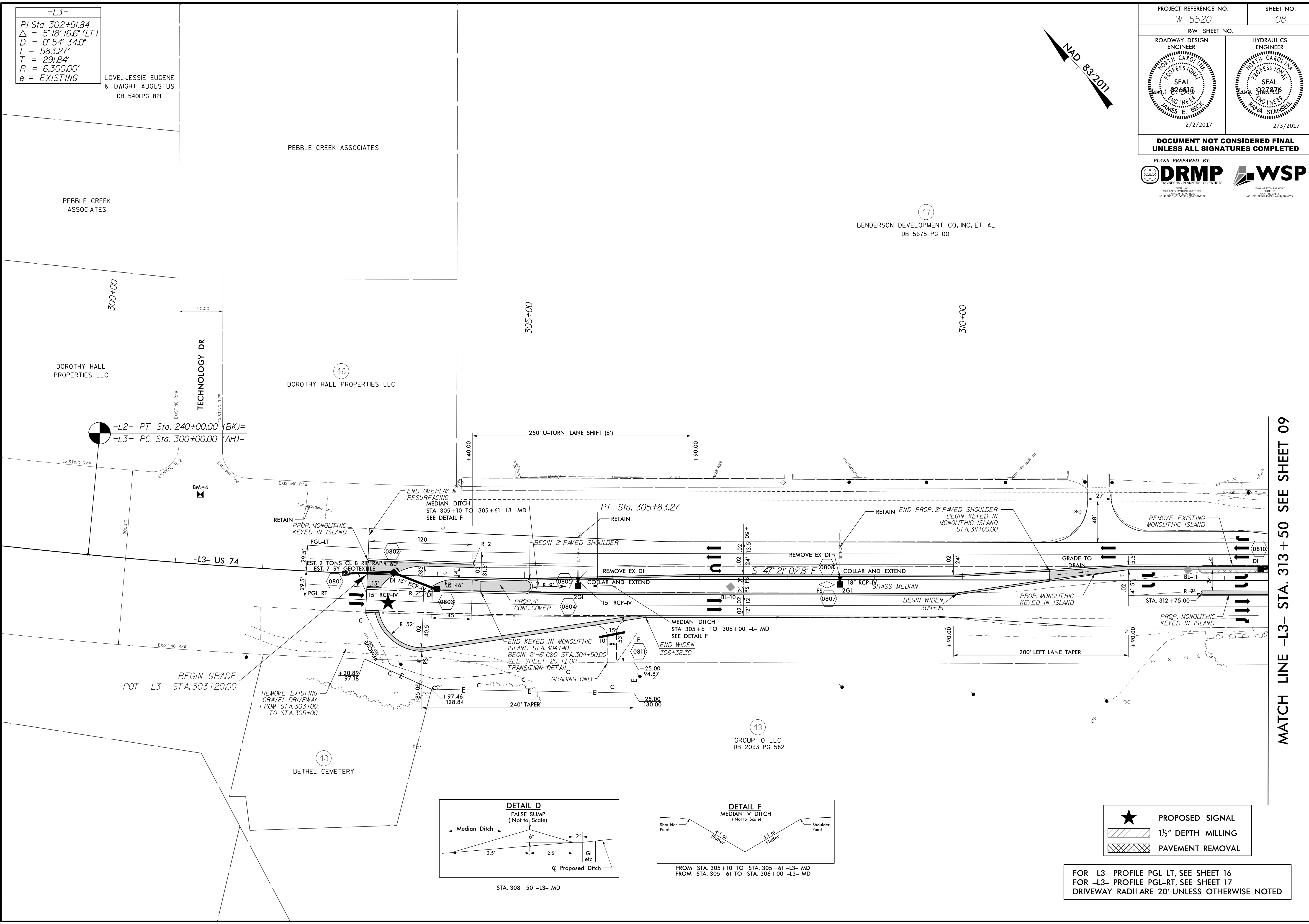
(47)
 BENDERSON DEVELOPMENT CO. INC. ET AL
 DB 5675 PG 001

REVISIONS

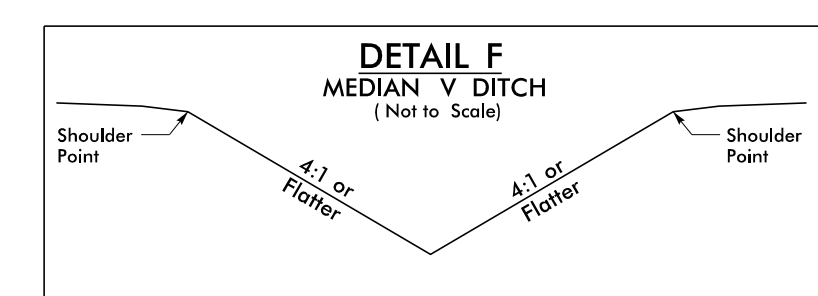
-L2- PT Sta. 240+00.00 (BK)=
 -L3- PC Sta. 300+00.00 (AH)=



TECHNOLOGY DR



STA. 308 +50 -L3- MD



FROM STA. 305+10 TO STA. 305+61 -L3- MD
FROM STA. 305+61 TO STA. 306+00 -L3- MD

- PROPOSED SIGNAL
- 1 1/2" DEPTH MILLING
- PAVEMENT REMOVAL

FOR -L3- PROFILE PGL-LT, SEE SHEET 16
 FOR -L3- PROFILE PGL-RT, SEE SHEET 17
 DRIVEWAY RADII ARE 20' UNLESS OTHERWISE NOTED

MATCH LINE -L3- STA. 313 + 50 SEE SHEET 09

12/7/2016 3:42:57 PM
 N:\Roadway\Proj\W5520_Rdy_psh_08.dgn