

GENERAL NOTES:
 USE CLASS "AA" CONCRETE THROUGHOUT.

OPTIONAL CONSTRUCTION - MONOLITHIC POUR, 2" KEYWAY, OR #4 BAR DOWELS AT 12" CENTERS AS DIRECTED BY THE ENGINEER.

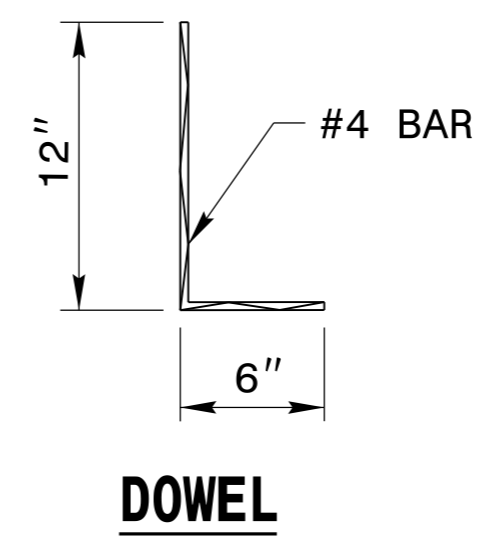
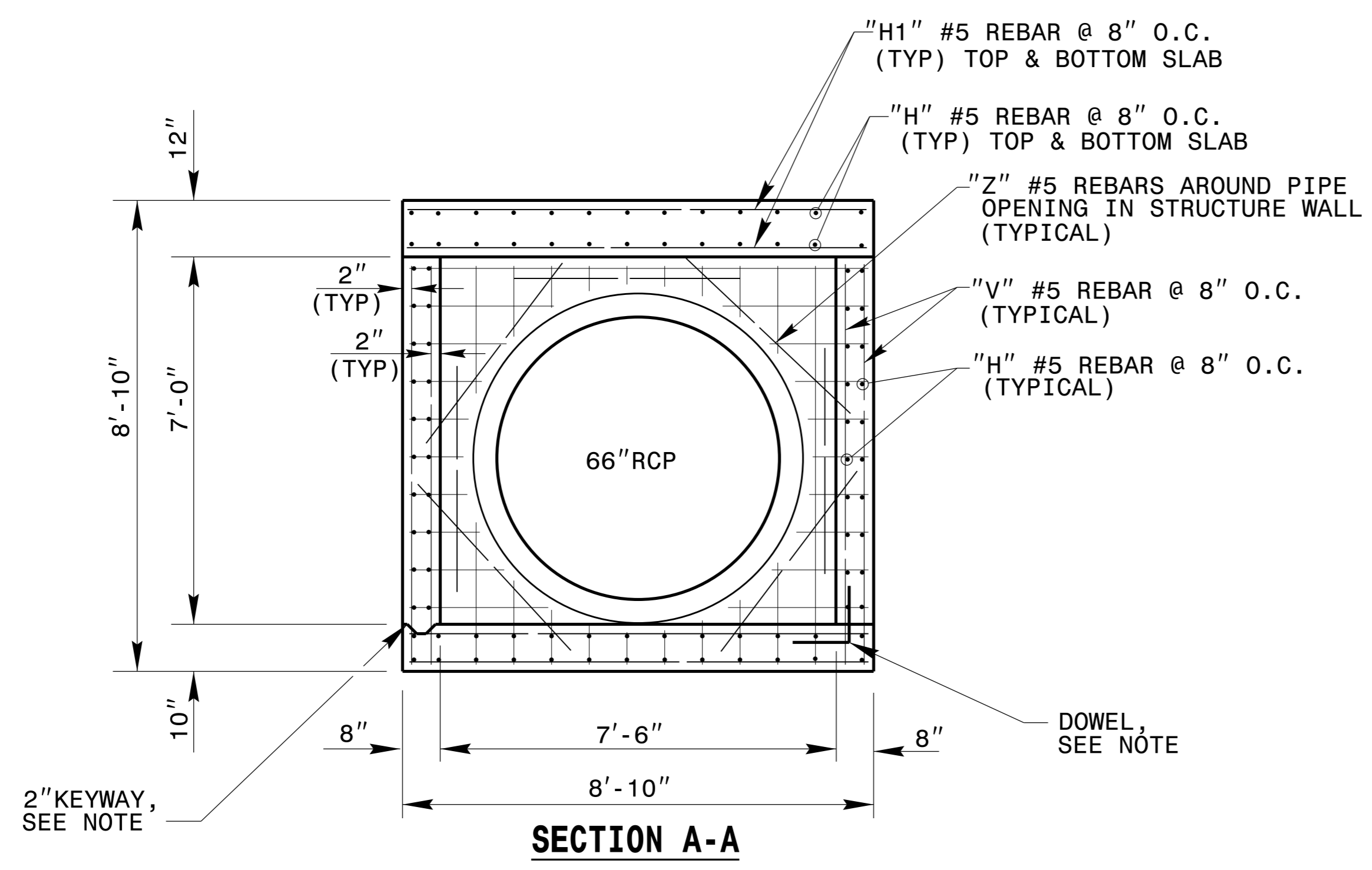
USE FORMS FOR THE CONSTRUCTION OF THE BOTTOM SLAB.

INSTALL MANHOLE IN POSITION AS DIRECTED BY THE ENGINEER. CUT AND BEND ALL REBAR CROSSING THIS OPENING TO ALLOW 2" MINIMUM CONCRETE COVERAGE.

CHAMFER ALL EXPOSED CORNERS 1".

2" MINIMUM CONCRETE COVERAGE ON ALL REBAR.

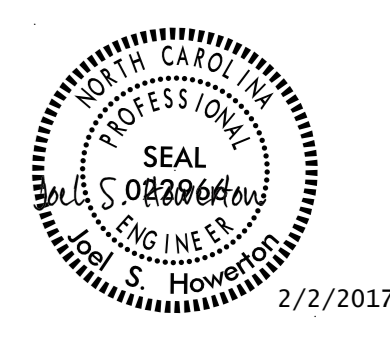
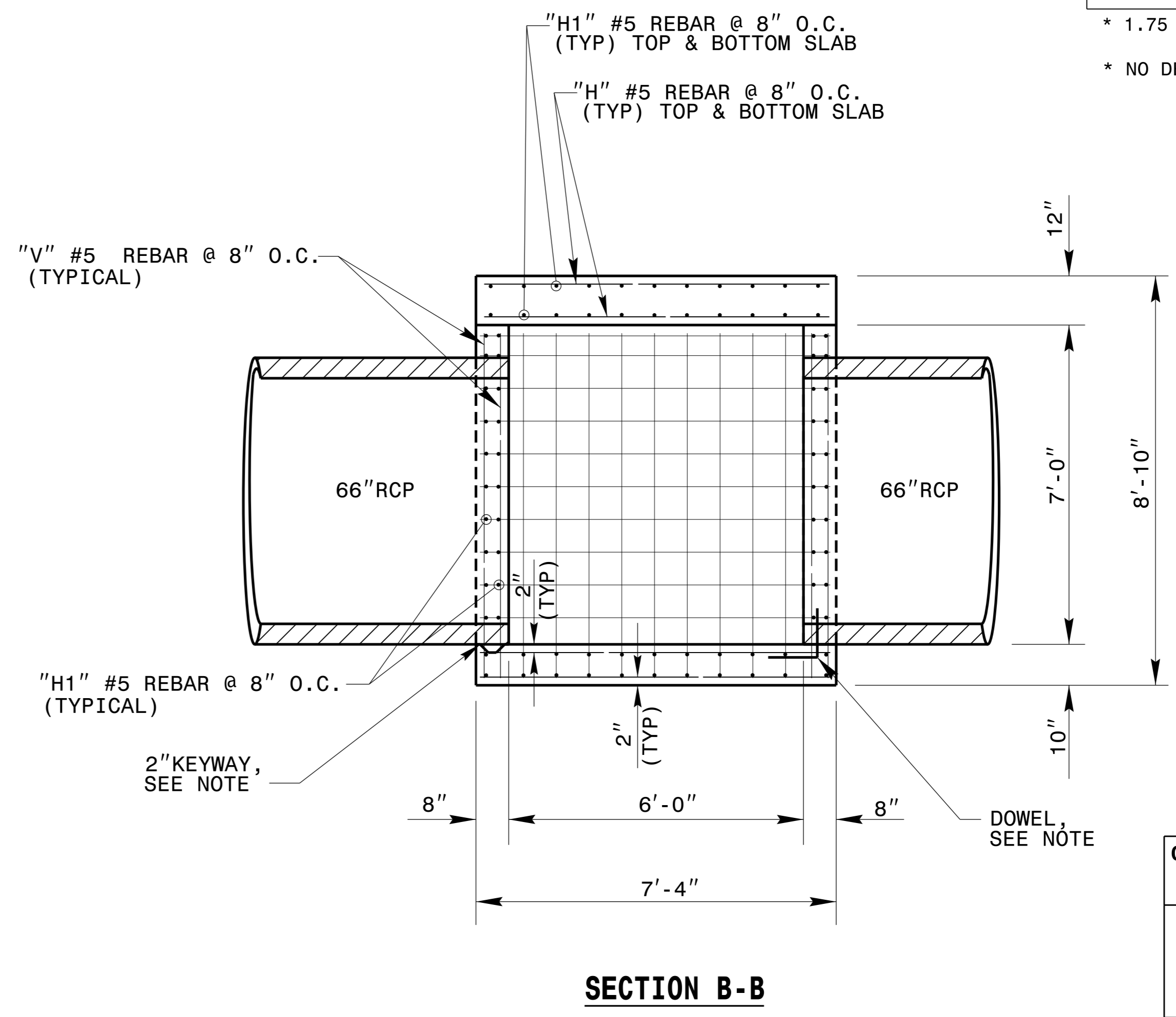
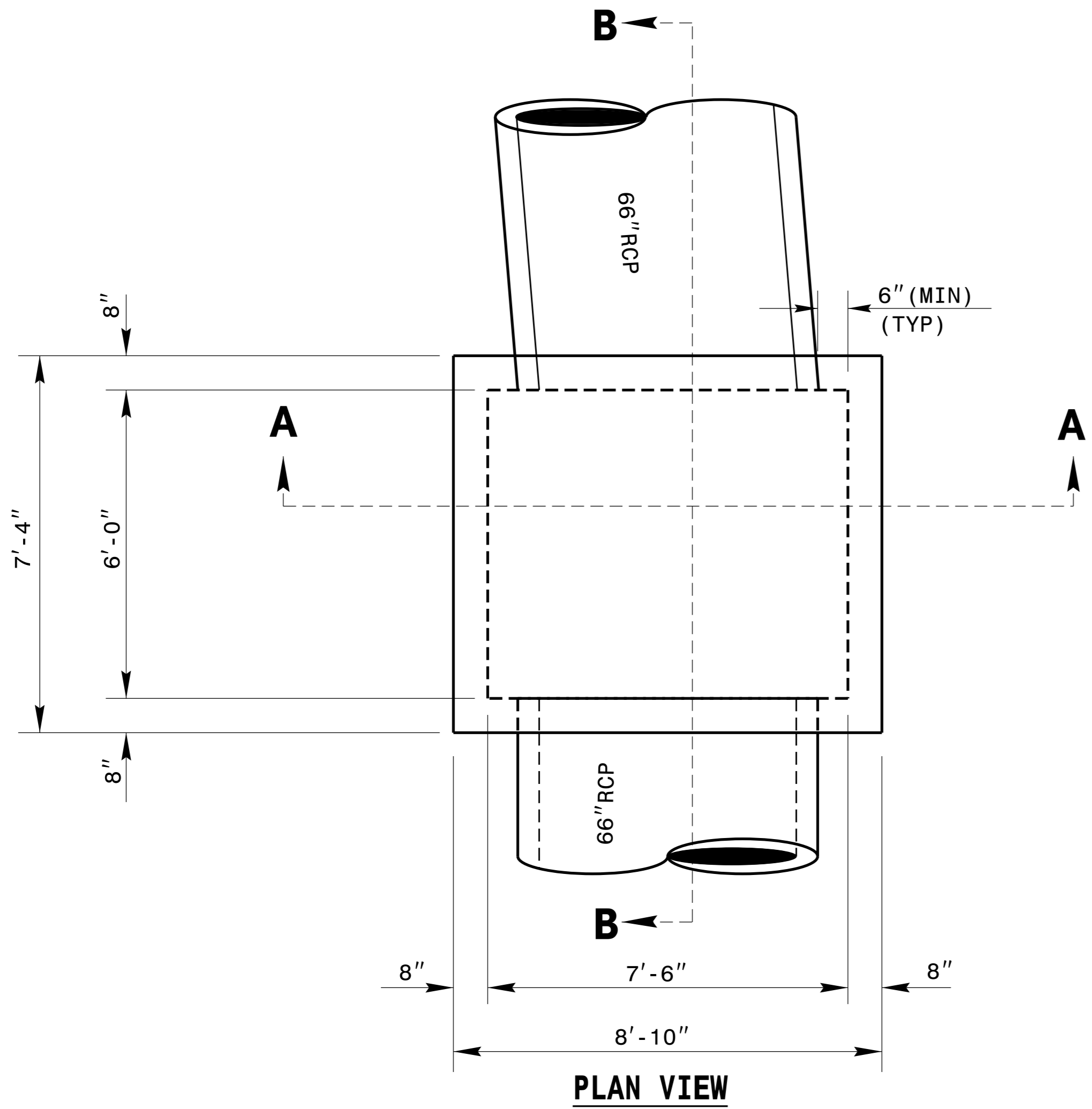
HEIGHT DIMENSIONS MAY BE ADJUSTED DOWN FOR SMALLER PIPES AS DIRECTED BY THE ENGINEER.



BILL OF MATERIALS				
BAR	NO.	SIZE	LENGTH	WEIGHT
H	92	#5	7'-0"	672
H1	84	#5	8'-6"	745
V	92	#5	7'-6"	720
Z	14	#5	4'-0"	59
TOTAL REINF. STEEL (LBS.)				2196
TOTAL CL. "AA" CONC. (CU. YDS.)				9.6

* 1.75 CU. YD. DEDUCTION FOR 2-66" RC PIPE

* NO DEDUCTION HAS BEEN MADE FOR PIPES



DOCUMENT NOT CONSIDERED FINAL UNLESS ALL SIGNATURES COMPLETED

CONTRACT STANDARDS & DEVELOPMENT UNIT
 STANDARDS AND SPECIAL DESIGN
 Office 919-707-6950 FAX 919-250-4119

TRAFFIC BEARING JUNCTION BOX

ORIGINAL BY: _____ DATE: _____
 MODIFIED BY: nbritt DATE: 04/22/08
 CHECKED BY: _____ DATE: _____
 FILE SPEC.: detail/nbritt/english/hydro/66_tbjb.dgn

DRAWING NOT TO SCALE

C:\TIME\DESIGN\CONCRETE\DRAWING\USER\NAME\$\$\$\$