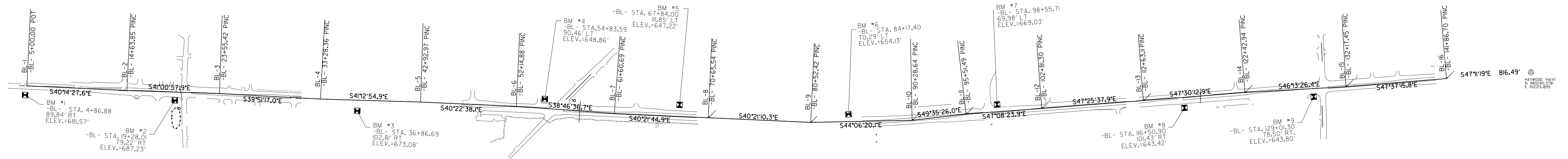
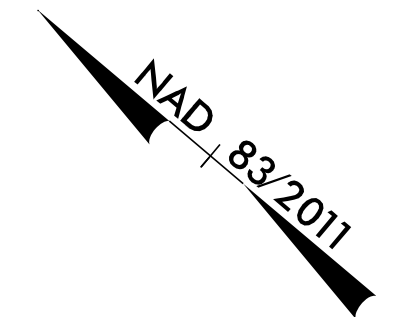


SURVEY CONTROL SHEET W-5520

NOTES:

- THE SITE CALIBRATION SHOWN IS BASED UPON A NETWORK TIED TO NATIONAL GEODETIC SURVEY CONTROL STATIONS, WHICH ARE BASED ON THE NAD83(2011) ADJUSTMENT. THIS CALIBRATION WILL ALLOW THE END USER TO WORK WITHIN THE SAME COORDINATE SYSTEM WHEN USING RTK (REAL TIME KINEMATIC) GPS AND A LOCAL BASE STATION. IF ANOTHER SYSTEM SUCH AS VRS (VIRTUAL REFERENCE STATION) IS USED, ADDITIONAL FIELD TIES MAY BE NEEDED TO REDUCE POSSIBLE ERRORS OR BIASES.
 - THE CONTROL DATA FOR THIS PROJECT CAN BE FOUND ELECTRONICALLY BY SELECTING PROJECT CONTROL DATA AT:
[HTTPS://CONNECT.NCDOT.GOV/RESOURCES/LOCATION/](https://connect.ncdot.gov/resources/location/)
 THE FILES TO BE FOUND ARE AS FOLLOWS:
 W-5520_IS_GPS/CALIB_08-15-14.HTML
 W-5520_IS_WGS84_08-15-14.TXT
 W-5520_IS_LOCAL_08-15-14.TXT
 W-5520_IS_CONTROL_08-15-14.TXT
 THE WGS84 AND LOCAL FILES ARE COMMA DELIMITED AND CAN BE USED TO REPRODUCE THE SITE CALIBRATION FOR THE END USER'S GPS EQUIPMENT. IF FURTHER INFORMATION IS NEEDED, PLEASE CONTACT THE LOCATION AND SURVEYS UNIT.
- ⊙ INDICATES GEODETIC CONTROL MONUMENTS USED OR SET FOR HORIZONTAL PROJECT CONTROL BY THE NCDOT LOCATION AND SURVEYS UNIT.
 PROJECT CONTROL ESTABLISHED USING GLOBAL POSITIONING SYSTEM.
 NETWORK ESTABLISHED FROM EXISTING HARN MONUMENTATION.
 SEE GPS CALIBRATION SHEET FOR HORIZONTAL AND VERTICAL COORDINATE VALUES.



⊙
 L73
 STA. 16+61.55
 100.00' RT
 ELEV. 687.23'

BENCH MARKS

- BM1 ELEVATION - 681.57
 N 490.699, 2680 E 1,502,178, 1250
 BL - STA 4+86.88 89.84 RT.
 FND. BRIDGE SPIKE IN THE
 E. FACE OF A 12" DIA. WOOD PP
- BM2 ELEVATION - 687.23
 N 489.609, 4500 E 1,503,122, 6850
 BL - STA 19+28.01 79.2182 RT.
 POURED MONUMENT W/DISK
 STAMPED *DRMP INC. W-5520-BM2
- BM3 ELEVATION - 673.08
 N 488.254, 7560 E 1,504,245, 2180
 BL - STA 36+86.69 102.8114 RT.
 XCUT/DMV
- BM4 ELEVATION - 648.86
 N 487.011, 2870 E 1,505,558, 0680
 BL - STA 54+83.59 95.4553 LT.
 POURED MONUMENT W/DISK
 STAMPED *DRMP INC. W-5520-BM4
- BM5 ELEVATION - 647.22
 N 486.024, 2763 E 1,506,400, 5044
 BL - STA 67+84.00 111.8523 LT.
 SET BRIDGE SPIKE IN PP
- BM6 ELEVATION - 654.13
 N 484.772, 0916 E 1,507,441, 0980
 BL - STA 84+17.40 70.2938 LT.
 SET X-CUT IN CONC. MEDIUM
- BM7 ELEVATION - 669.03
 N 483.789, 6841 E 1,508,484, 7496
 BL - STA 98+55.71 69.9754 LT.
 SET PMON W/ ALUM. DISK
 *DRMP INC. W-5520 BM7
- BM8 ELEVATION - 643.42
 N 482.447, 9277 E 1,509,689, 5458
 BL - STA 116+50.90 101.4267 RT.
 SET BRIDGE SPIKE IN PP
- BM9 ELEVATION - 643.80
 N 481.610, 6016 E 1,510,615, 6415
 BL - STA. 129+01.30 78.5032 RT.
 SET PMON W/ ALUM. DISK
 *DRMP INC. W-5520 BM9

DATUM DESCRIPTION
 THE LOCALIZED COORDINATE SYSTEM DEVELOPED FOR THIS PROJECT IS BASED ON THE STATE PLANE COORDINATES ESTABLISHED BY THE NATIONAL GEODETIC SURVEY FOR MONUMENT "HAYWOOD" WITH NAD 83/NA 2011 STATE PLANE GRID COORDINATES OF NORTHING: 480240.3781(±) EASTING: 1512213.1895(±) ELEVATION: 652.40(±)
 THE AVERAGE COMBINED GRID FACTOR USED ON THIS PROJECT (GROUND TO GRID) IS: 0.999845581
 THE N.C. LAMBERT GRID BEARING AND LOCALIZED HORIZONTAL GROUND DISTANCE FROM "HAYWOOD" TO -BL- 16 STATION 141+86.70 IS N47°11'18.75"W 816.4900'
 ALL LINEAR DIMENSIONS ARE LOCALIZED HORIZONTAL DISTANCES
 VERTICAL DATUM USED IS NAVD 88

Point	North	East	Elevation	"L" Station	Offset	Description
L73	487476.0756	1500816.0391	684.5575	10+00.00	3222.93' RT.	CONC. MONUMENT W/DISK STAMPED "L 73 1934 696.980"
BL1	490747.3982	1502255.1915	684.5575	10+00.00	11.6' RT.	SET 5/8 IR. W/ DRMP INC. TRAV. CAP LB 2648
BL2	490016.6582	1502871.8432	691.4182	10+63.85	11.2' RT.	SET 5/8 IR. W/ DRMP INC. TRAV. CAP LB 2648
BL3	489338.3458	1503462.9548	684.5384	19+55.34	0.98' LT.	SET 5/8 IR. W/ DRMP INC. TRAV. CAP LB 2648
BL4	488592.0506	1504086.454	673.7350	129+28.25	5.53' RT.	SET 5/8 IR. W/ DRMP INC. TRAV. CAP LB 2648
BL5	487866.431	1504722.0269	670.0686	138+92.72	10.91' LT.	SET 5/8 IR. W/ DRMP INC. TRAV. CAP LB 2648
Point	North	East	Elevation	"L2" Station	Offset	Description
BL6	487164.1204	1505319.2592	651.2661	209+21.91	13.14' LT.	SET 5/8 IR. W/ DRMP INC. TRAV. CAP LB 2648
BL7	486426.7779	1505916.6078	645.5444	218+67.41	10.99' RT.	SET 5/8 IR. W/ DRMP INC. TRAV. CAP LB 2648
BL8	485737.3175	1506497.6066	644.0330	227+72.26	9.03' RT.	SET 5/8 IR. W/ DRMP INC. TRAV. CAP LB 2648
BL9	484985.2399	1507136.6085	647.0008	OUT OF CHAIN	SET 5/8 IR. WITH CAP TRAV. LB 2648	
Point	North	East	Elevation	"L3" Station	Offset	Description
BL10	484284.2609	1507816.0366	667.9600	307+35.25	8.59' RT.	SET 5/8 IR. W/ DRMP INC. TRAV. CAP LB 2648
BL11	483945.3223	150824.1551	674.0140	312+57.70	11.85' LT.	SET 5/8 IR. W/ DRMP INC. TRAV. CAP LB 2648
BL12	483448.9010	1508749.162	656.1590	319+87.52	8.24' LT.	SET 5/8 IR. W/ DRMP INC. TRAV. CAP LB 2648
Point	North	East	Elevation	"L4" Station	Offset	Description
BL13	482784.6834	1509472.1360	641.3800	401+44.32	7.92' LT.	SET 5/8 IR. W/ DRMP INC. TRAV. CAP LB 2648
BL14	482122.7624	1510194.5870	639.0614	411+24.5	9.70' LT.	SET 5/8 IR. W/ DRMP INC. TRAV. CAP LB 2648
BL15	481448.5575	1510898.2313	644.3604	420+98.45	10.28' RT.	SET 5/8 IR. W/ DRMP INC. TRAV. CAP LB 2648
BL16	480795.2549	1511614.2174	648.5179	430+67.69	6.52' RT.	SET 5/8 IR. W/ DRMP INC. TRAV. CAP LB 2648
HAY1	480240.3781	1512213.1895		OUT OF CHAIN	CONCRETE MONUMENT WITH DISK STAMPED "HAYWOOD 1965"	

NOTE: DRAWING NOT TO SCALE

6/2/09
 I:\2\2015\12\58\40_PM\LocationSurveys\W5520_1s_01c1.dgn
 DWG: 6/2/09 10:58:40 AM
 PLOT: 6/2/09 10:58:40 AM