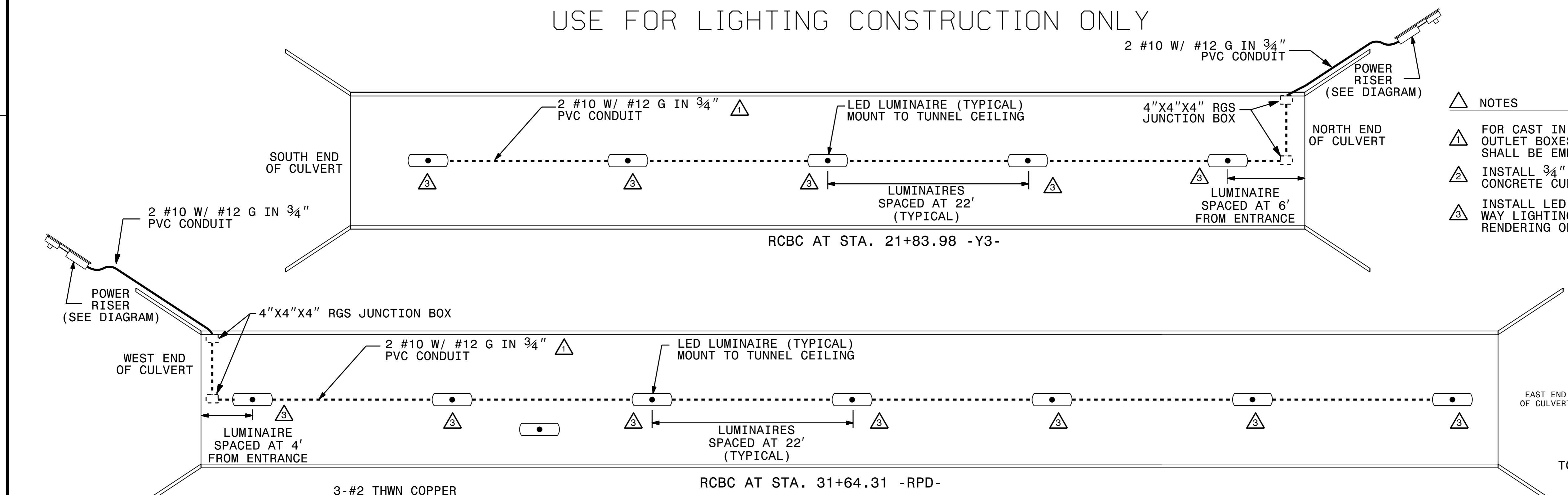
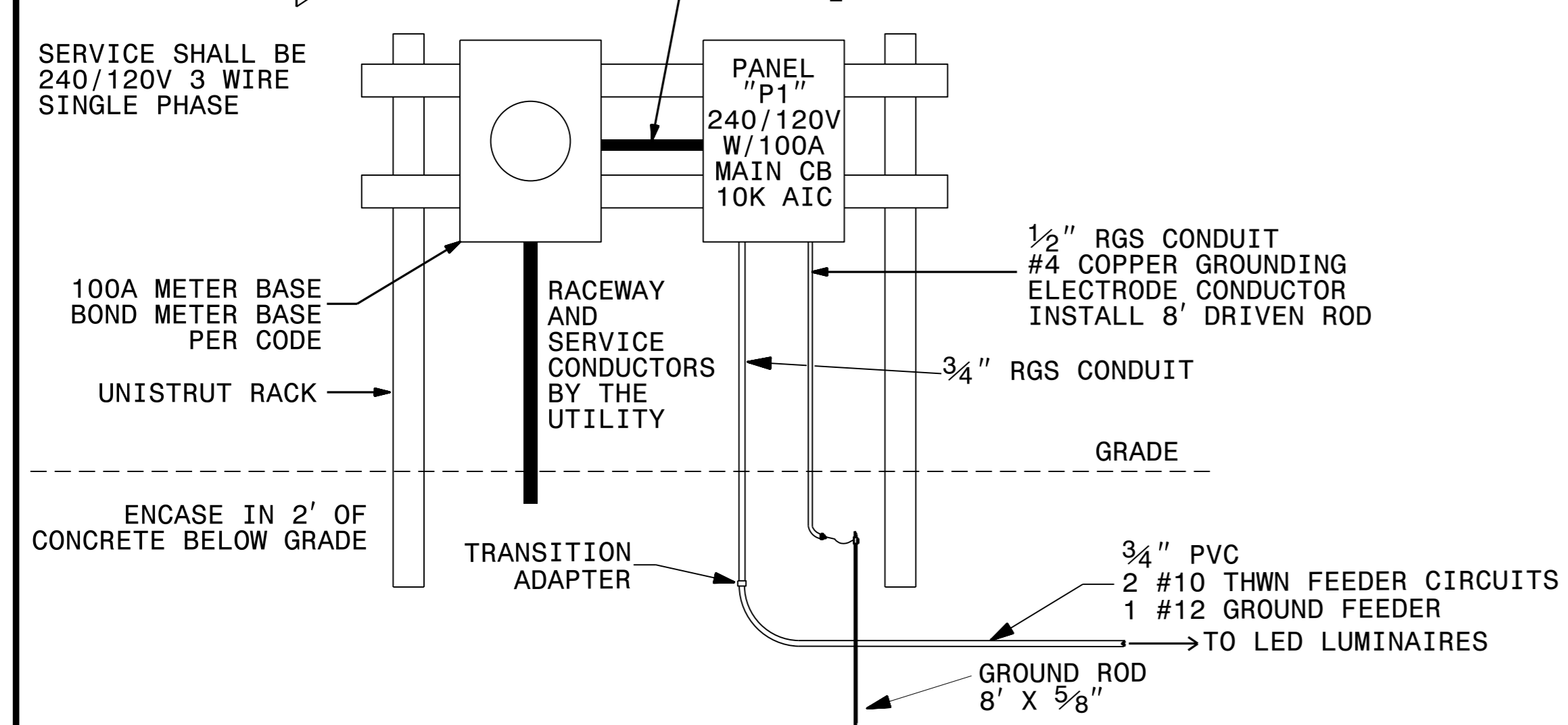


USE FOR LIGHTING CONSTRUCTION ONLY

DCN



- NOTES
- △ FOR CAST IN PLACE CULVERT, PVC CONDUIT, OUTLET BOXES AND EXPANSION FITTINGS SHALL BE EMBEDDED IN TOP OF CULVERT.
 - △ INSTALL 3/4" PVC EXPANSION FITTINGS AT ALL CONCRETE CULVERT SECTION JUNCTIONS.
 - △ INSTALL LED LUMINAIRES THAT ARE FOR PASSAGE WAY LIGHTING, 50W MAXIMUM, AND WITH A COLOR RENDERING OF 4000K.

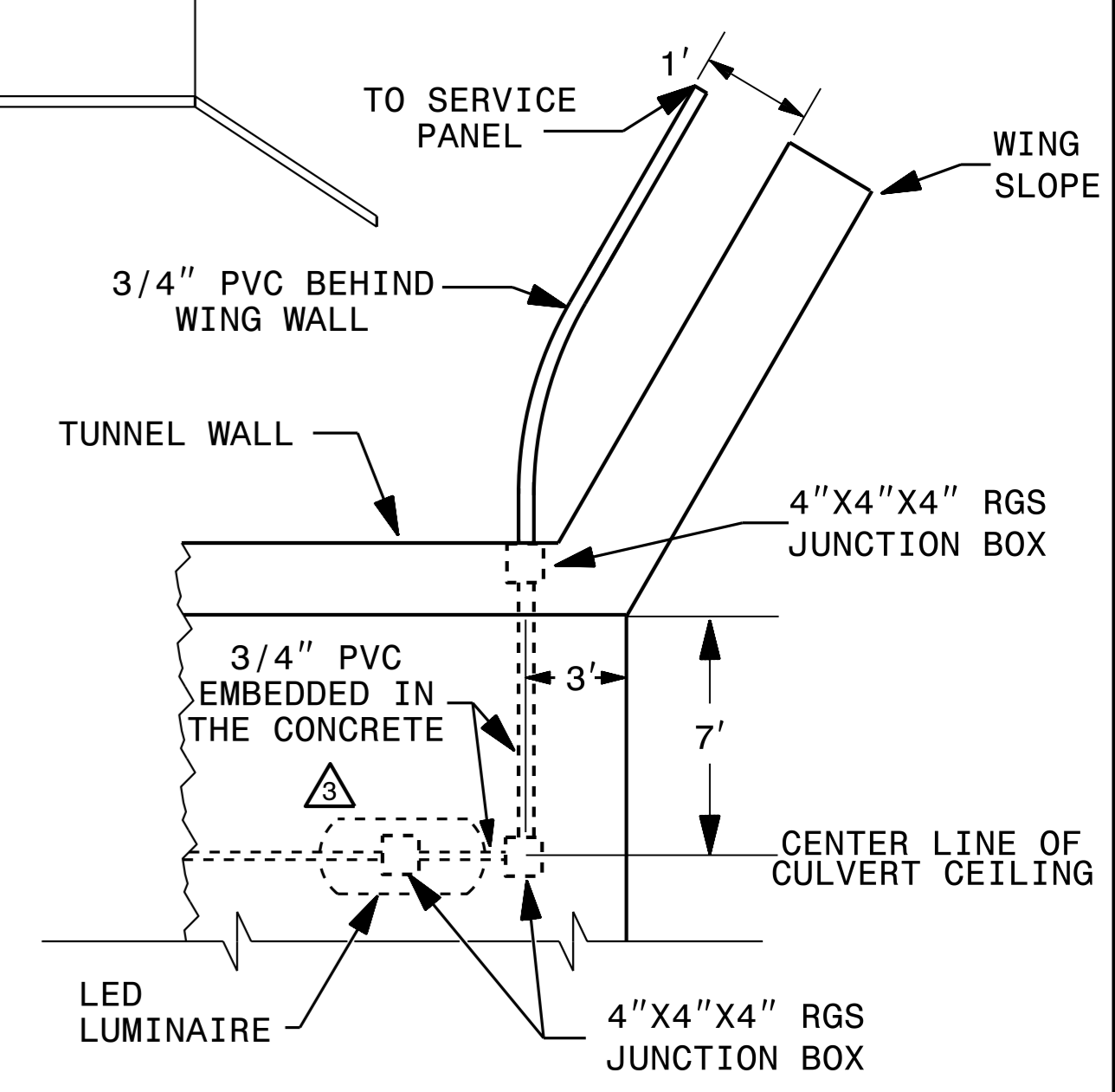
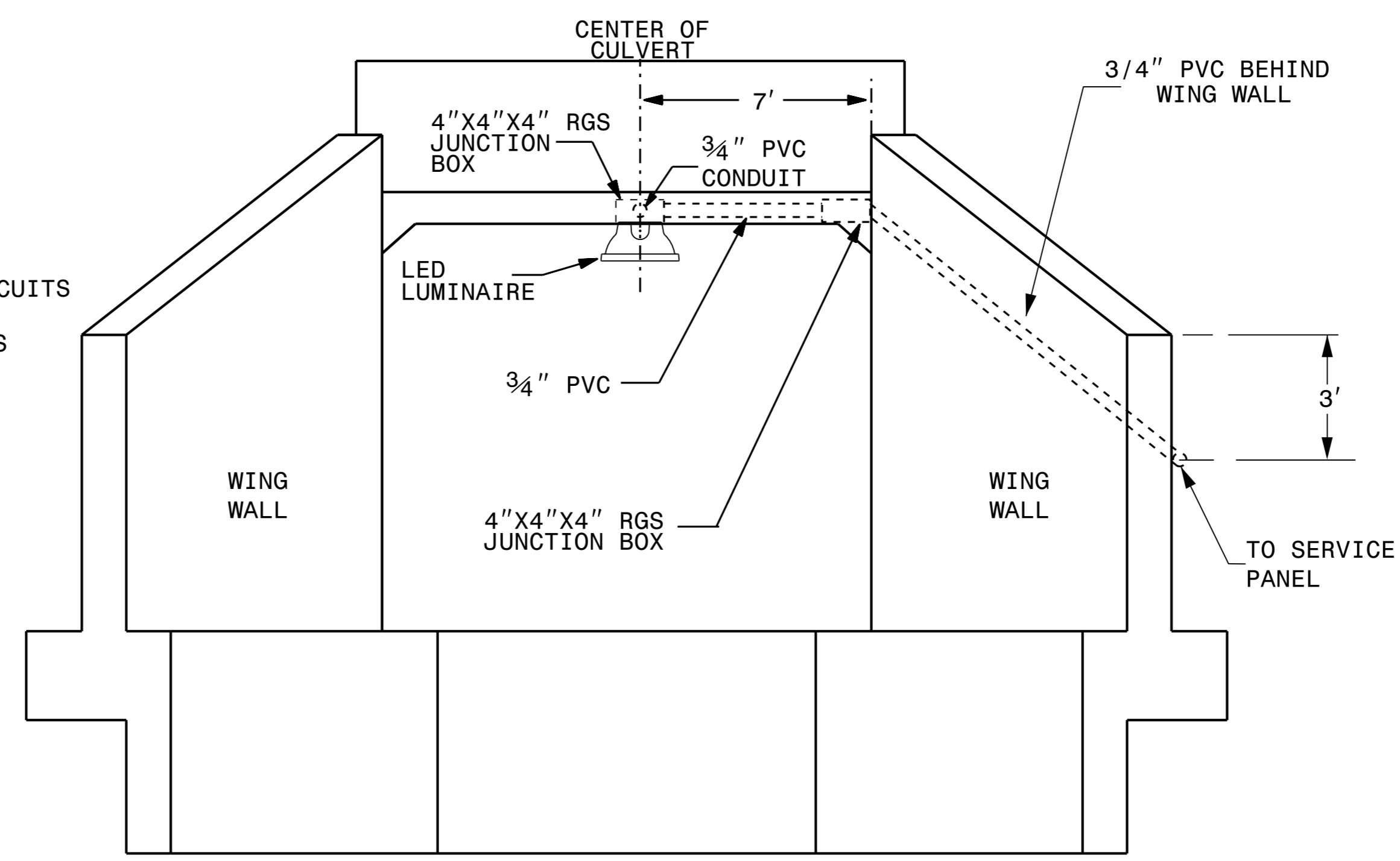


SERVICE	WIRE SZ	GRND SZ	LOAD VA	BRK AMP	CKT #	P1	CKT #	BRK AMP	LOAD VA	GRND SZ	WIRE SZ	SERVICE
CULVERT LIGHTS	2#10	#12	600	15/1	1		2					
SPARE			600	15/1	3		4					
					5		6					
					7		8					
					9		10					
					11		12					
					13		14					
					15		16					
					17		18					
					19		20					

LOCATION: OUTDOOR
 PANEL MOUNTING: SURFACE
 SERVICE: 240/120, 1PH, 3 WIRE, AC, FULL NEUTRAL, SERVICE ENTRANCE
 MAIN BREAKER: 100A
 CABINET: NEMA 3R
 ACCESSORIES: GROUND BAR
 COMMENTS: NEW PANEL "P1", BOLT ON BREAKERS

CONNECTED VA
 PHASE "A" = 600 VA
 PHASE "B" = 600 VA

CULVERT LIGHTING PLANS
 PLAN VIEW

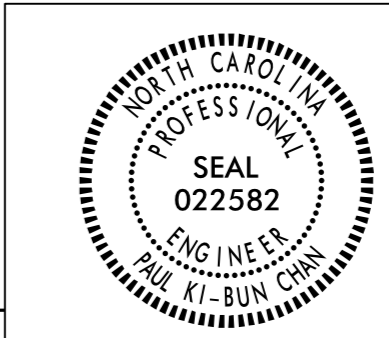


FIXTURE MOUNTING DETAIL
 TOP VIEW

PROJECT NO. I-5000
 GASTON COUNTY
 STATIONS: 21+83.98 -Y3-
 & 31+64.31 -RPD-

SHEET 1 OF 1

STATE OF NORTH CAROLINA
 DEPARTMENT OF TRANSPORTATION
 RALEIGH
 PEDESTRIAN CULVERT LIGHTING SYSTEMS
 UNDER I85/US 321 EXIT RAMP AND UNDER BULB AVENUE



SEE PROJECT SPECIAL PROVISIONS TITLED "PEDESTRIAN CULVERT LIGHTING SYSTEMS" FOR MATERIALS CONSTRUCTION METHODS AND PAYMENT

REVISIONS						SHEET NO.
NO.	BY:	DATE:	NO.	BY:	DATE:	C-26
1			3			SHEETS
2			4			26

10-JAN-2017 14:47
 F:\Lighting\Electrical\Lighting Design\I-5000_ECS_RCBC_TUNNEL.dgn
 \$\$\$USERNAME\$\$\$

DocuSigned by: Paul Chan 1/10/2017