

AS-BUILT REPAIR QUANTITY TABLE

REPAIRS BENT 4 (RIGHT)	QUANTITIES			
	ESTIMATE		ACTUAL	
SHOTCRETE REPAIRS	AREA SF	VOLUME CF	AREA SF	VOLUME CF
CAP	60.6	25.3 *		
COLUMNS & STRUTS	70.7	29.5 *		
CONCRETE REPAIRS	AREA SF	VOLUME CF	AREA SF	VOLUME CF
CAP	31.3	13.8 *		
COLUMNS & STRUTS	21.9	12.1 *		
EPOXY RESIN INJECTION	LN. FT		LN. FT	
CAP	0.0			
COLUMNS & STRUTS	0.0			
EPOXY COATING	SQ. FT.		SQ. FT.	
TOP OF BENT CAP	109			

VALUES IN CHART REPRESENT ESTIMATED REPAIR TOTALS AFTER REMOVAL OF UNSOUND CONCRETE, MIN. OF 1" BEHIND REBAR AND 2" MIN. CLEAR TO SAWCUT. SEE REPAIR DETAILS.

NOTES

REPAIR LOCATIONS AND ESTIMATED QUANTITIES ARE GIVEN WITH THE BEST INFORMATION AVAILABLE. IF ADDITIONAL REPAIRS NOT SHOWN ON THE DRAWINGS ARE DEEMED NECESSARY BY THE ENGINEER, THE ENGINEER WILL NOTE ON THE DRAWINGS THE APPROXIMATE LOCATIONS AND DESCRIPTION OF THE REPAIRS AND ADJUST THE ACTUAL QUANTITIES ENTERED INTO THE REPAIR SUMMARY OF QUANTITIES TABLE.



SHOTCRETE REPAIRS MAY BE SUBSTITUTED IN LIEU OF CONCRETE REPAIRS WITH THE APPROVAL OF THE ENGINEER.

FOR REPAIR DETAILS, SEE "TYPICAL CAP AND COLUMN REPAIR DETAILS" SHEET.

EPOXY COATING SHALL BE APPLIED TO THE TOP FACE OF THE CAP. THE CONTRACTOR SHALL NOT COAT THE AREA OF THE CAP BENEATH THE MASONRY PLATES. FOR EPOXY COATING, SEE SPECIAL PROVISIONS.

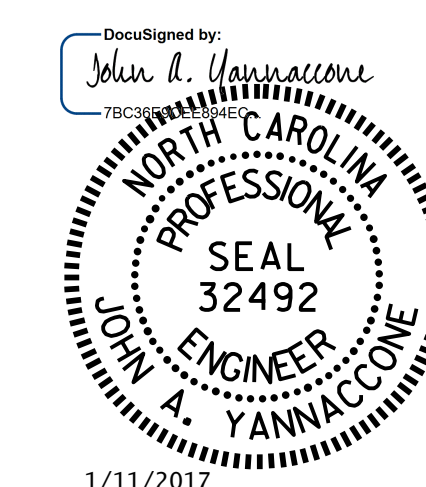
* QUANTITY HAS BEEN INCREASED DUE TO THE POTENTIAL FOR FURTHER DETERIORATION SINCE THE FIELD INSPECTION BY STRUCTURES MANAGEMENT UNIT.

CONCRETE REPAIRS TO THE BENT CAP MAY REQUIRE BRIDGE JACKING. FOR BRIDGE JACKING, SEE "JACKING DETAILS" SHEET.

 DAMAGED AREA
 EPOXY RESIN INJECTION

PROJECT NO. I-5000
GASTON COUNTY
 BRIDGE NO. 120

SHEET 5 OF 6

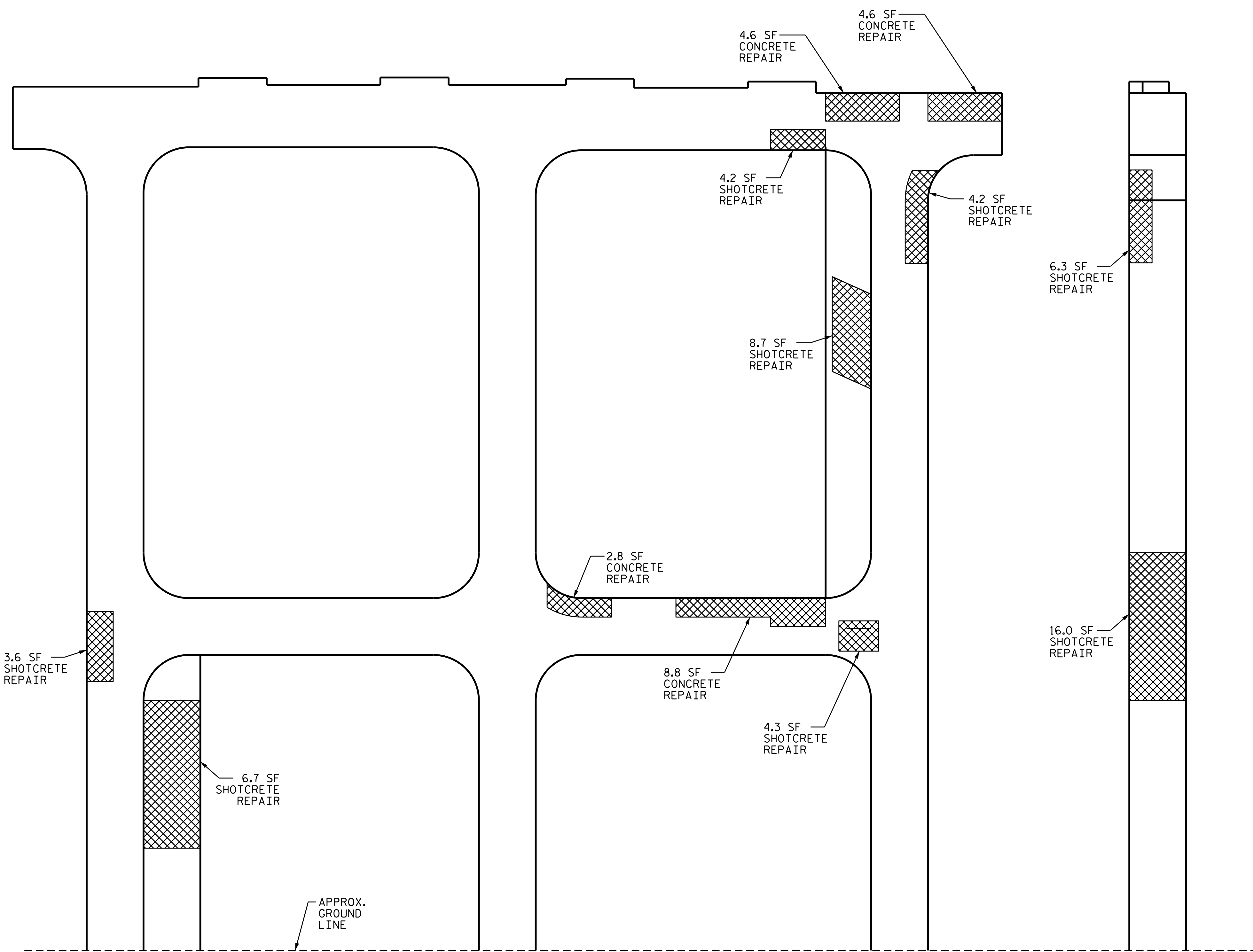
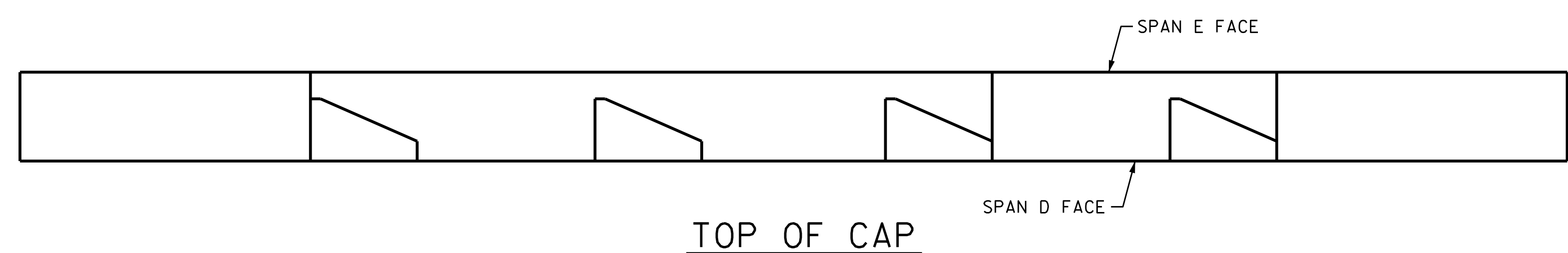


STATE OF NORTH CAROLINA
 DEPARTMENT OF TRANSPORTATION
 RALEIGH

**BENT 4
 SPAN D FACE
 (RIGHT SECTION)**

REVISIONS						SHEET NO.
NO.	BY:	DATE:	NO.	BY:	DATE:	S-20
1			3			TOTAL SHEETS
2			4			30

DOCUMENT NOT CONSIDERED FINAL UNLESS ALL SIGNATURES COMPLETED



ELEVATION

(COLUMN FACE IS SHOWN UNWRAPPED FOR CLARITY)

END VIEW

SOUTH FACE

DRAWN BY : D. V. JOYNER DATE : 11/2016
 CHECKED BY : J. YANNACONE DATE : 11/2016