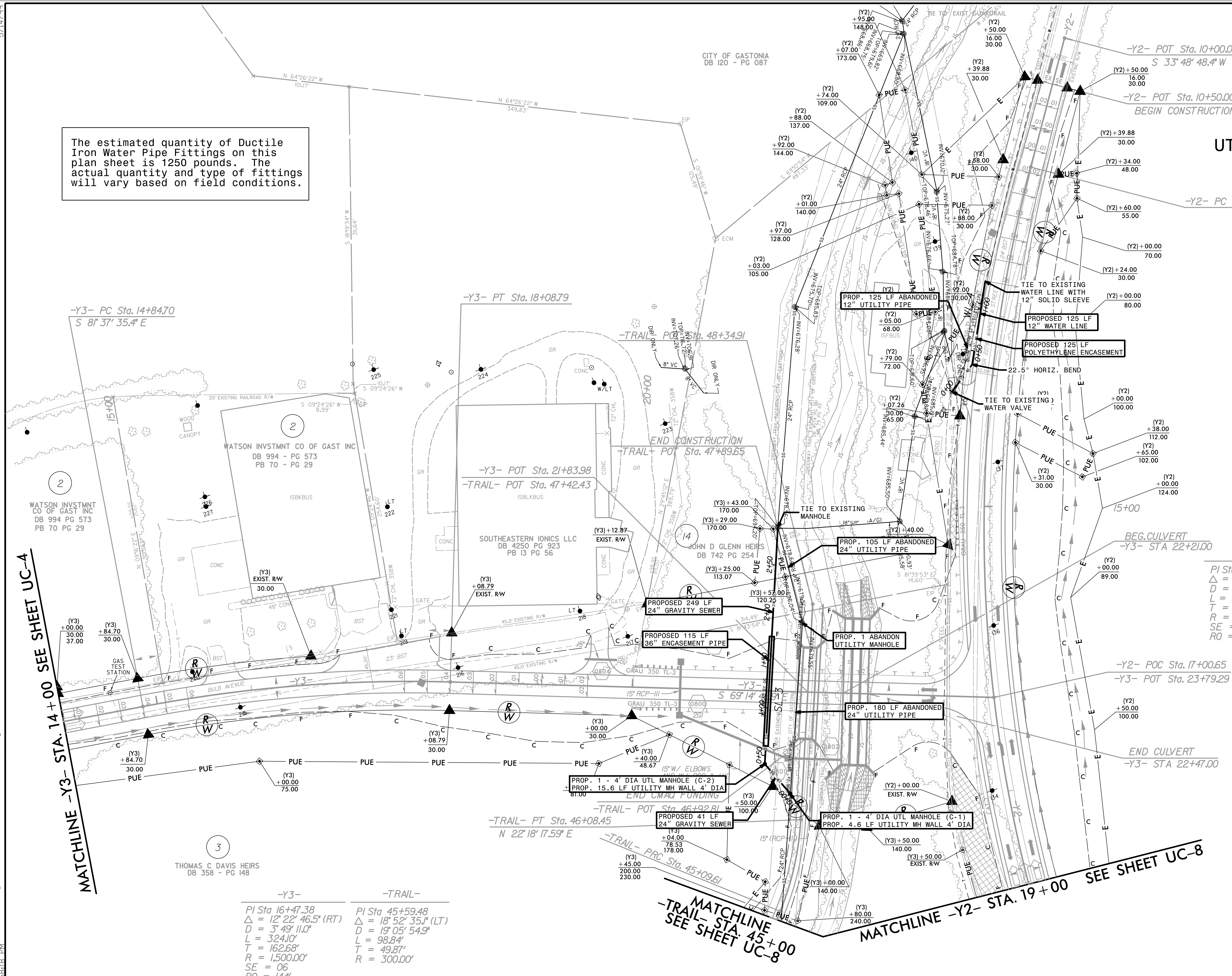


# UTILITY CONSTRUCTION

**DOCUMENT NOT CONSIDERED FINAL  
UNLESS ALL SIGNATURES COMPLETED**

The estimated quantity of Ductile Iron Water Pipe Fittings on this plan sheet is 1250 pounds. The actual quantity and type of fittings will vary based on field conditions.



14  
JOHN D GLENN HEIRS  
DB 344 - PG 588

PI Sta 16+22.15  
Δ = 35° 38' 48.0" (LT)  
D = 3' 49' 11.0"  
L = 933.23'  
T = 482.27'  
R = 1,500.00'  
SE = 06  
RO = 144'



-Y3-	-TRAIL-
PI Sta 16+47.38	PI Sta 45+59.48
Δ = 12° 22' 46.5" (RT)	Δ = 18° 52' 35.1" (LT)
D = 3' 49' 11.0"	D = 19' 05' 54.9"
L = 324.10'	L = 98.84'
T = 162.68'	T = 49.87'
R = 1,500.00'	R = 300.00'
SE = 06	
RO = 144'	

MATCHLINE -Y3- STA. 14+00 SEE SHEET UC-4

MATCHLINE -TRAIL- STA. 45+00 SEE SHEET UC-8

MATCHLINE -Y2- STA. 19+00 SEE SHEET UC-8

5/14/99  
I:\7206\_15000\_Ut\_(r-dg\_sht)#08\_UC\utl\_const\_Sht#07.psh.dgn