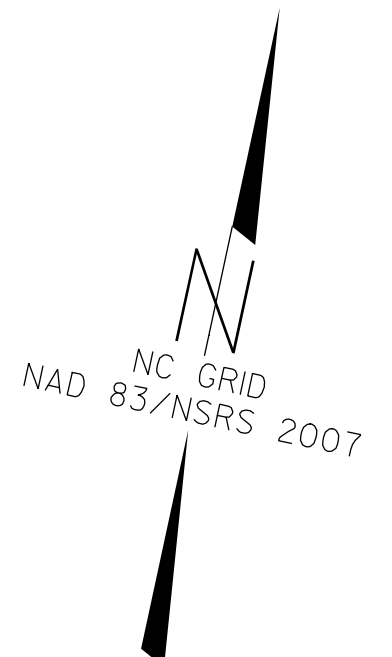


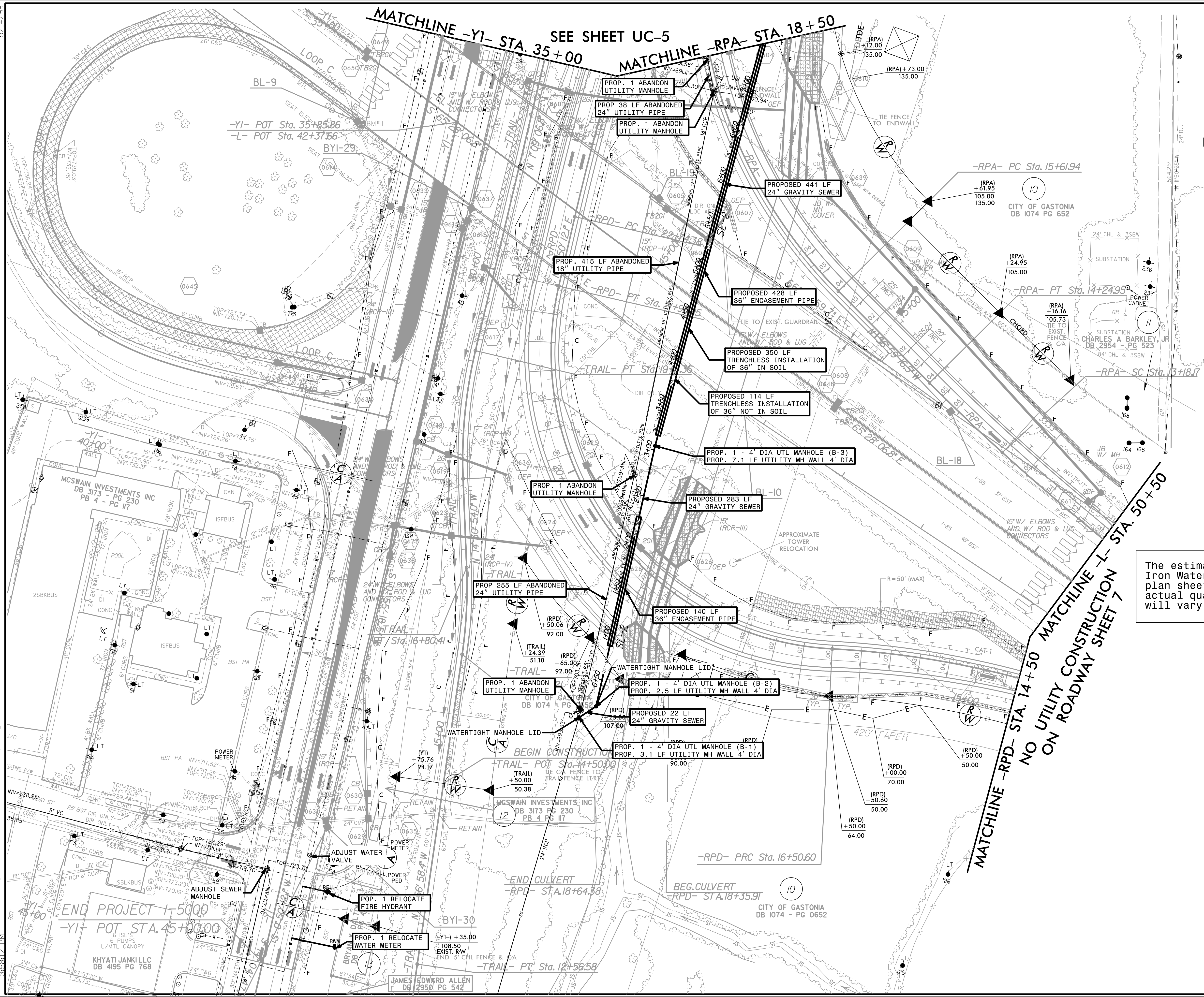
PROJECT REFERENCE NO.	SHEET NO.
I-5000	UC-6
DESIGNED BY: BCH	
DRAWN BY: BCH	
CHECKED BY: JLT	
APPROVED BY: JES	
REVISED:	
NORTH CAROLINA DEPARTMENT OF TRANSPORTATION	UTILITY CONSTRUCTION PLANS ONLY
UTILITIES ENGINEERING SEC. PHONE: (919) 707-6690 FAX: (919) 250-4151	

**UTILITY CONSTRUCTION**

**DOCUMENT NOT CONSIDERED FINAL UNLESS ALL SIGNATURES COMPLETED**



The estimated quantity of Ductile Iron Water Pipe Fittings on this plan sheet is 400 pounds. The actual quantity and type of fittings will vary based on field conditions.



**MATCHLINE -RPA- STA. 14+50**  
**MATCHLINE -L- STA. 50+50**  
**NO UTILITY CONSTRUCTION ON ROADWAY SHEET 7**

**MATCHLINE -YI- STA. 35+00** SEE SHEET UC-5  
**MATCHLINE -RPA- STA. 18+50**

5/14/99  
 I:\7206\150000\150000.Lt.(rdg\_sht#06)\_UC(utl\_const\_Sht#06).psb.dgn  
 1/7/2016 11:15:00 AM

END PROJECT I-5000  
 -YI- POT STA. 45+00.00  
 KHYATI JANKILLC DB 4195 PG 768  
 JAMES EDWARD ALLEN DB 2950 PG 542