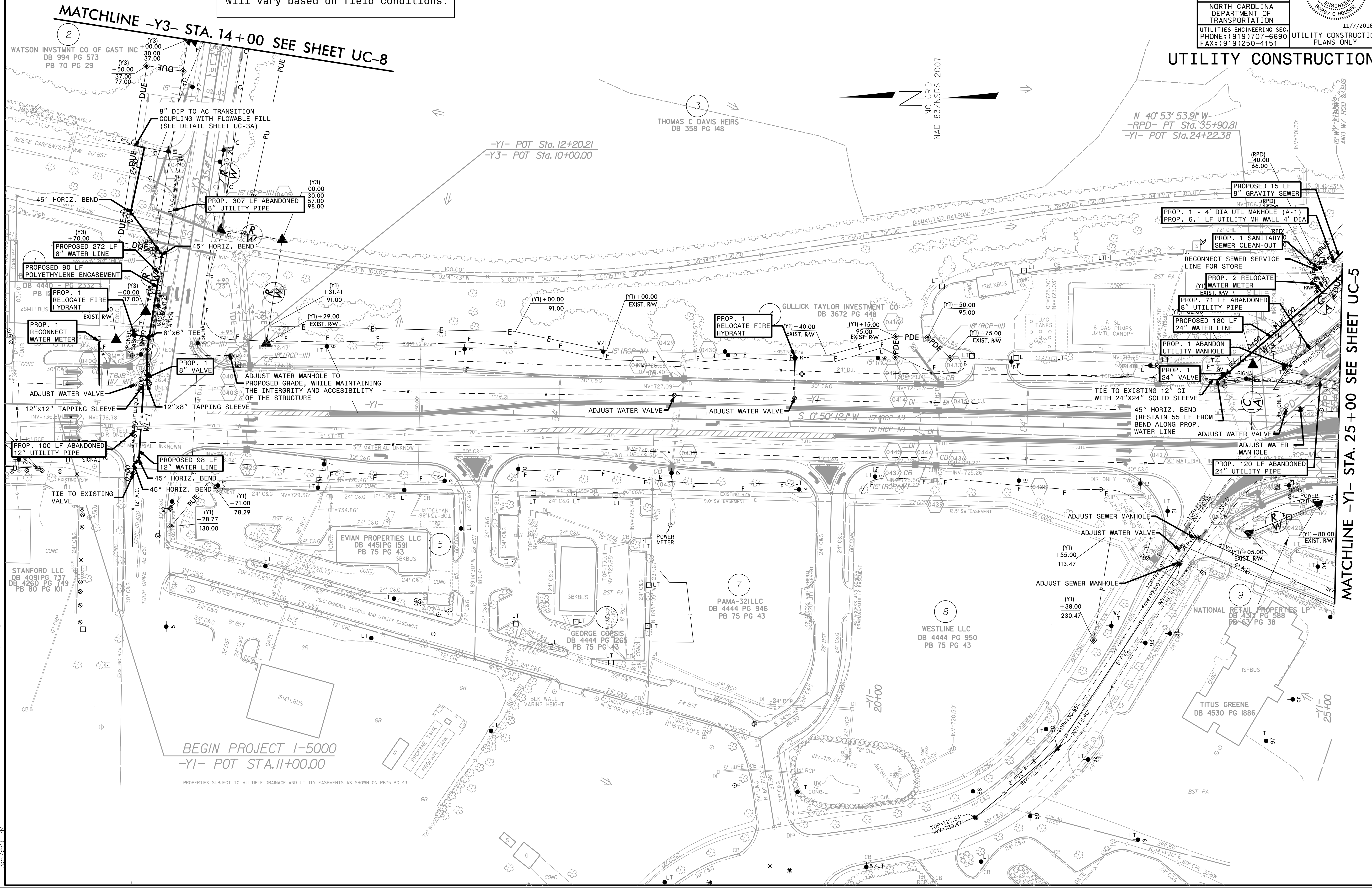


5/14/99  
I:\7206\15000\Ut-rdy\_sht#04\UC\utl\_const\_Sht#04\_psh.dgn

The estimated quantity of Ductile Iron Water Pipe Fitting on this plan sheet is 3270 pounds. The actual quantity and type of fittings will vary based on field conditions.

DOCUMENT NOT CONSIDERED FINAL  
UNLESS ALL SIGNATURES COMPLETED

PROJECT REFERENCE NO.	SHEET NO.
I-5000	UC-4
DESIGNED BY: BCH	
DRAWN BY: BCH	
CHECKED BY: JLT	
APPROVED BY: JES	
REVISED:	
NORTH CAROLINA DEPARTMENT OF TRANSPORTATION	
UTILITIES ENGINEERING SEC. PHONE: (919) 707-6690 FAX: (919) 250-4151	
UTILITY CONSTRUCTION PLANS ONLY	



MATCHLINE -Y3- STA. 14+00 SEE SHEET UC-8

MATCHLINE -Y1- STA. 25+00 SEE SHEET UC-5

BEGIN PROJECT I-5000  
-Y1- POT STA. 11+00.00

PROPERTIES SUBJECT TO MULTIPLE DRAINAGE AND UTILITY EASEMENTS AS SHOWN ON PB75 PG 43