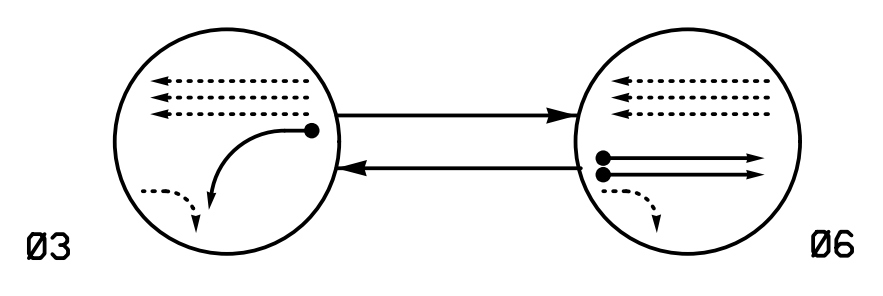


PHASING DIAGRAM



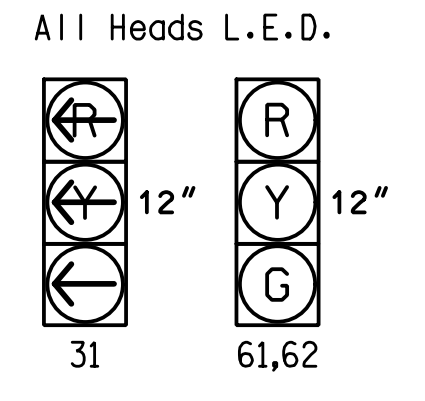
PHASING DIAGRAM DETECTION LEGEND

- ◄● DETECTED MOVEMENT
- ◄ UNDETECTED MOVEMENT (OVERLAP)
- ◄..... UNSIGNALIZED MOVEMENT
- ◄- - - PEDESTRIAN MOVEMENT

TABLE OF OPERATION

SIGNAL FACE	PHASE		
	Ø 3	Ø 6	FLASH
31	—	R	R
61,62	R	G	Y

SIGNAL FACE I.D.



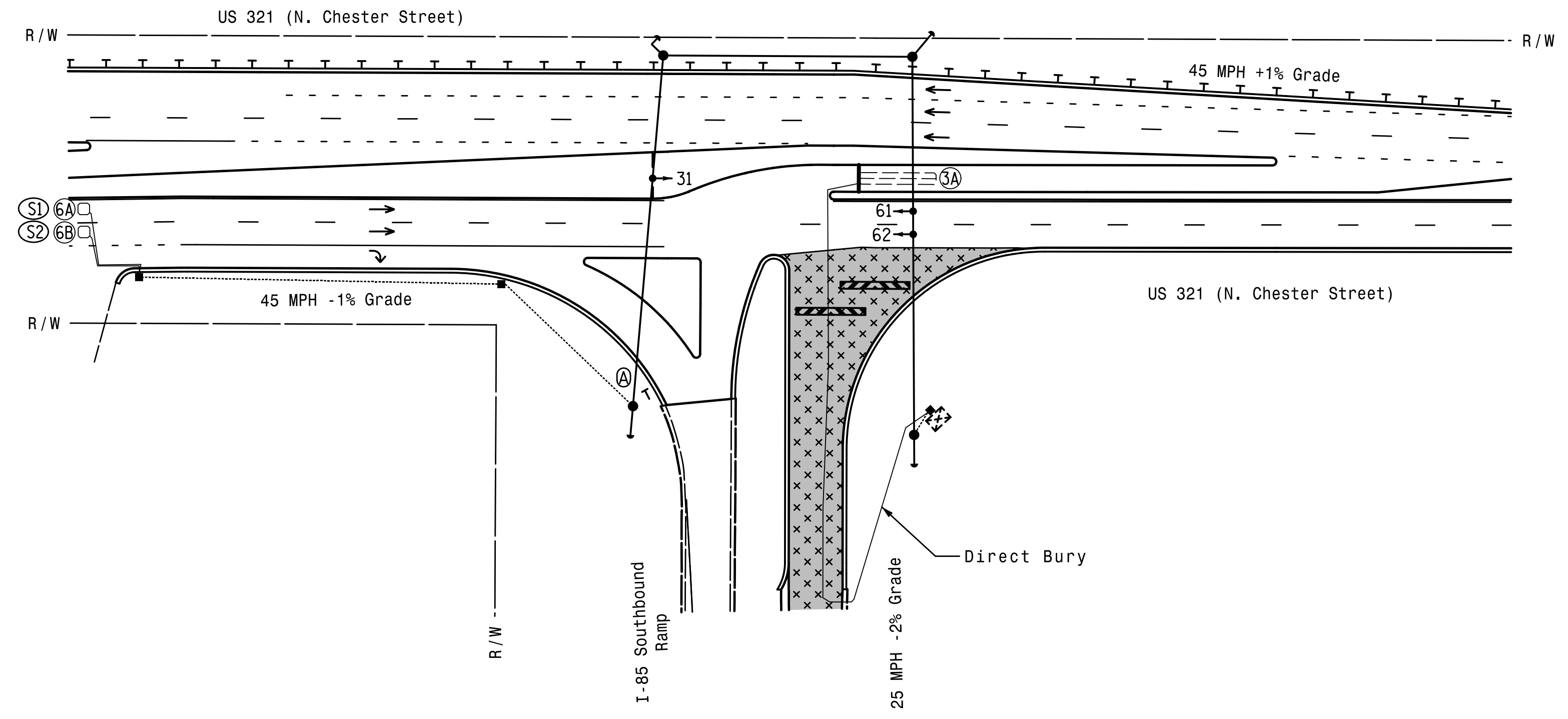
OASIS 2070 LOOP & DETECTOR INSTALLATION CHART

LOOP	SIZE (FT)	DISTANCE FROM STOPBAR (FT)	TURNS	NEW LOOP	DETECTOR PROGRAMMING					SYSTEM LOOP	NEW CARD	
					PHASE	CALLING	EXTENSION	FULL TIME DELAY	STRETCH TIME			DELAY TIME
3A	6X40	0	2-4-2	-	3	Y	Y	-	-	-	-	-
6A/S1	6X6	300	6	Y	6	Y	Y	-	-	-	Y	-
6B/S2	6X6	300	6	Y	6	Y	Y	-	-	-	Y	-

2 Phase Fully Actuated (Gastonia City Signal System)

NOTES

- Refer to "Roadway Standard Drawings NCDOT" dated January 2012 and "Standard Specifications for Roads and Structures" dated January 2012.
- Do not program signal for late night flashing operation unless otherwise directed by the Engineer.
- Set all detector units to presence mode.
- Maximum times shown in timing chart are for free-run operation only. Coordinated signal system timing values supersede these values.
- Signal System data: Controller Asset #0023.



OASIS 2070 TIMING CHART

FEATURE	PHASE	
	3	6
Min Green 1 *	7	12
Extension 1 *	2.0	6.0
Max Green 1 *	20	90
Yellow Clearance	3.0	4.6
Red Clearance	2.4	1.3
Red Revert	2.0	2.0
Walk 1 *	-	-
Don't Walk 1	-	-
Seconds Per Actuation *	-	1.5
Max Variable Initial *	-	34
Time Before Reduction *	-	15
Time To Reduce *	-	30
Minimum Gap	-	3.0
Recall Mode	-	MIN RECALL
Vehicle Call Memory	-	YELLOW
Dual Entry	-	-
Simultaneous Gap	ON	ON

* These values may be field adjusted. Do not adjust Min Green and Extension times for phase 6 lower than what is shown. Min Green for all other phases should not be lower than 4 seconds.

LEGEND

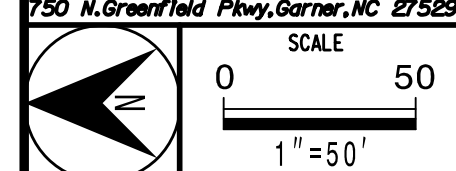
- | PROPOSED | EXISTING |
|--|--|
| ○→ Traffic Signal Head | ●→ Traffic Signal Head |
| ◐→ Modified Signal Head | N/A |
| ⊥ Sign | ⊥ Sign |
| ⊥ Pedestrian Signal Head With Push Button & Sign | ⊥ Pedestrian Signal Head With Push Button & Sign |
| ○ Signal Pole with Guy | ● Signal Pole with Guy |
| ○ Signal Pole with Sidewalk Guy | ● Signal Pole with Sidewalk Guy |
| ⊠ Inductive Loop Detector | ⊠ Inductive Loop Detector |
| ⊠ Controller & Cabinet | ⊠ Controller & Cabinet |
| □ Junction Box | □ Junction Box |
| --- 2-in Underground Conduit | --- 2-in Underground Conduit |
| N/A Right of Way | --- Right of Way |
| N/A Directional Arrow | → Directional Arrow |
| N/A Guardrail | — — — Guardrail |
| ⊠ "YIELD" Sign (R1-2) | ⊠ "YIELD" Sign (R1-2) |
| █ Construction Zone | N/A |
| ▨ Construction Zone Barricade | N/A |

Temporary Signal Phase 2, Step 2

DOCUMENT NOT CONSIDERED FINAL UNLESS ALL SIGNATURES COMPLETED

	Prepared for US 321 (N. Chester Street) at I-85 Southbound Ramp		SEAL
	Division 12 Gaston Co.	Gastonia	
PLAN DATE: September 2016 PREPARED BY: J.A. Wagner	REVIEWED BY: T.R. Terrell	REVIEWED BY: N.R. Simmons	11/8/2016
REVISIONS _____	INITI.	DATE	DATE

HNTB HNTB NORTH CAROLINA, P.C.
 343 E. Six Forks Road, Suite 200
 Raleigh, North Carolina 27609
 NC License No: C-1554
 (919) 546-8997



DocuSigned by: *Natasha R. Simmons*
 SIGNATURE DATE
 SIG. INVENTORY NO. 12-0023T5