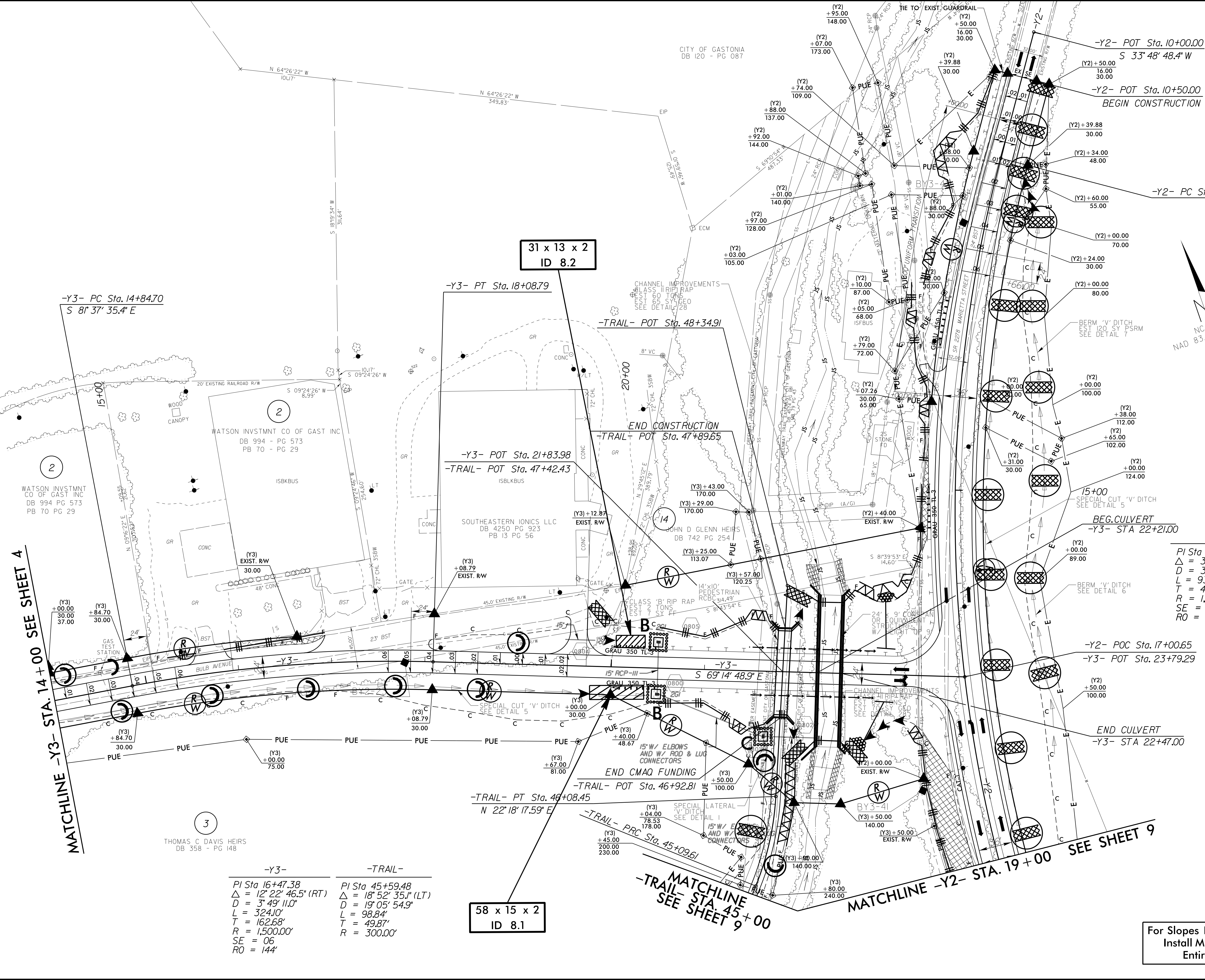


PROJECT REFERENCE NO.	SHEET NO.
I-5000	EC-19/CONST.B
RW SHEET NO.	
ROADWAY DESIGN ENGINEER	HYDRAULICS ENGINEER

8/17/99

01/NOV/2016 16:21 \\c:\p\ar\ar\Des\1-5000-EC.dwg psh08.dgn
 P:\ar\ar\Des\1-5000-EC.dwg psh08.dgn
 11/11/2016 10:29:23



58 x 15 x 2
ID 8.1

NC GRID
NAD 83/NSRS 2007

-Y2-
PI Sta 16+22.15
Δ = 35' 38" 48.0" (LT)
D = 3' 49" 11.0"
L = 933.23'
T = 482.27'
R = 1,500.00'
SE = 06
RO = 144'

-Y3- PI Sta 16+47.38 Δ = 12' 22" 46.5" (RT) D = 3' 49" 11.0" L = 324.10' T = 162.68' R = 1,500.00' SE = 06 RO = 144'	-TRAIL- PI Sta 45+59.48 Δ = 18' 52" 35.1" (LT) D = 19' 05" 54.9" L = 98.84' T = 49.87' R = 300.00'
--	--

For Slopes Excavated Greater Than 10 feet
Install Matting for Erosion Control on
Entire Slope as Work Allows.