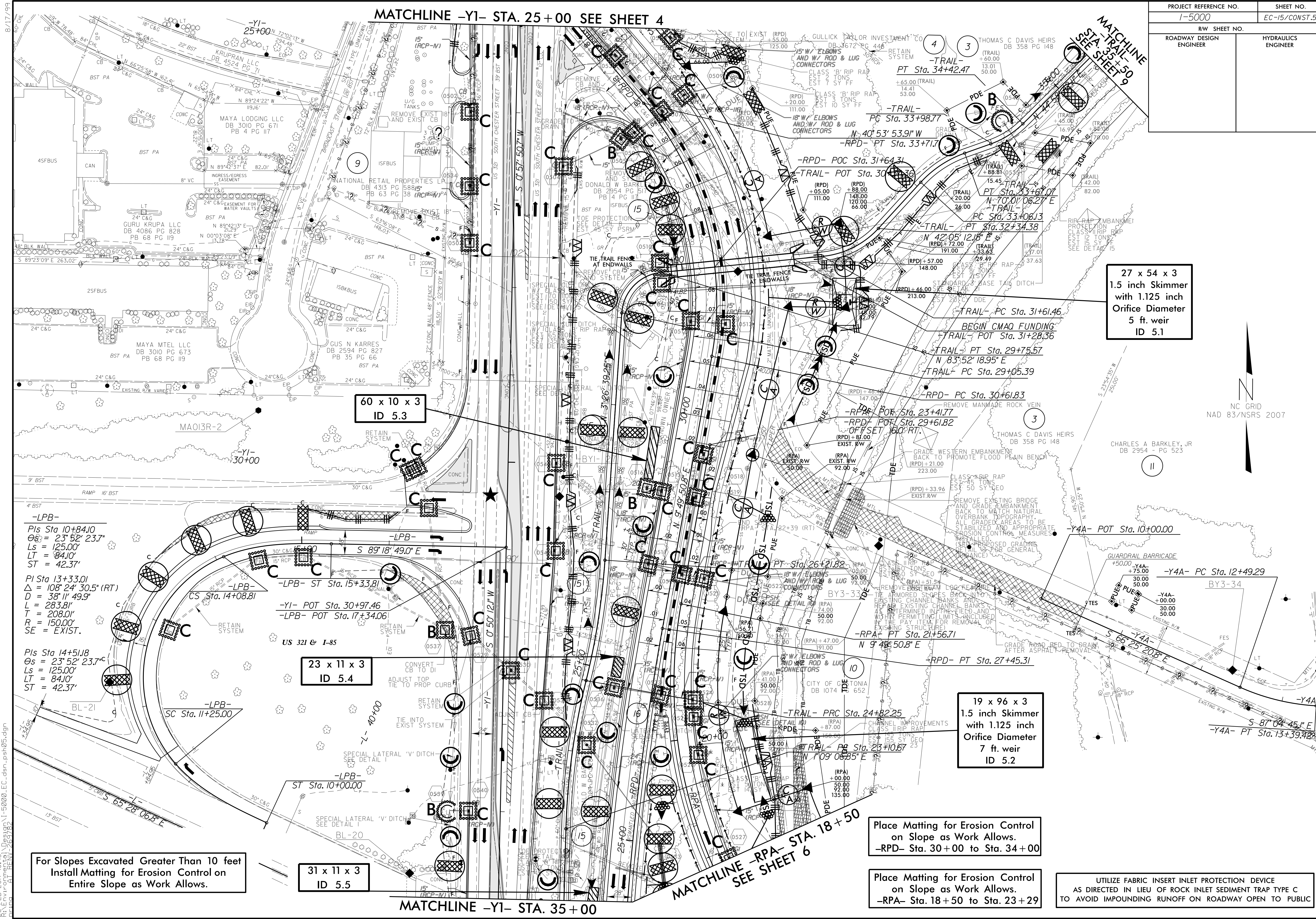


PROJECT REFERENCE NO.	SHEET NO.
1-5000	EC-15/CONST.5
RW SHEET NO.	
ROADWAY DESIGN ENGINEER	HYDRAULICS ENGINEER

MATCHLINE -Y1- STA. 25+00 SEE SHEET 4

MATCHLINE -Y1- STA. 35+50 SEE SHEET 9



27 x 54 x 3
1.5 inch Skimmer
with 1.125 inch
Orifice Diameter
5 ft. weir
ID 5.1

60 x 10 x 3
ID 5.3

23 x 11 x 3
ID 5.4

19 x 96 x 3
1.5 inch Skimmer
with 1.125 inch
Orifice Diameter
7 ft. weir
ID 5.2

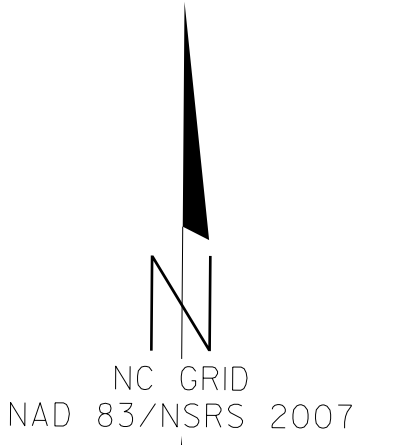
31 x 11 x 3
ID 5.5

For Slopes Excavated Greater Than 10 feet
Install Matting for Erosion Control on
Entire Slope as Work Allows.

Place Matting for Erosion Control
on Slope as Work Allows.
-RPD- Sta. 30+00 to Sta. 34+00

Place Matting for Erosion Control
on Slope as Work Allows.
-RPA- Sta. 18+50 to Sta. 23+29

UTILIZE FABRIC INSERT INLET PROTECTION DEVICE
AS DIRECTED IN LIEU OF ROCK INLET SEDIMENT TRAP TYPE C
TO AVOID IMPOUNDING RUNOFF ON ROADWAY OPEN TO PUBLIC



8/17/19 20-FEB-2017 16:45 D:\Design\1-5000\EC.dwg - psh05.dgn

-LPB-
Pis Sta 10+84.10
 $\Delta = 108^\circ 24' 30.5''$ (RT)
Ls = 125.00'
LT = 84.10'
ST = 42.37'

PI Sta 13+33.01
-LPB-
D = 38' 11' 49.9"
L = 283.81'
T = 208.01'
R = 150.00'
SE = EXIST.

Pis Sta 14+51.18
 $\Delta = 23^\circ 52' 23.7''$
Ls = 125.00'
LT = 84.10'
ST = 42.37'

-Y1- POT Sta. 30+97.46
-LPB- POT Sta. 17+34.06

-RPA- PT Sta. 21+56.71
N 94° 48' 50.8" E

-Y4A- POT Sta. 10+00.00

-Y4A- PC Sta. 12+49.29

-Y4A- PT Sta. 13+39.42

MATCHLINE -Y1- STA. 35+00

MATCHLINE -RPA- STA. 18+50
SEE SHEET 6