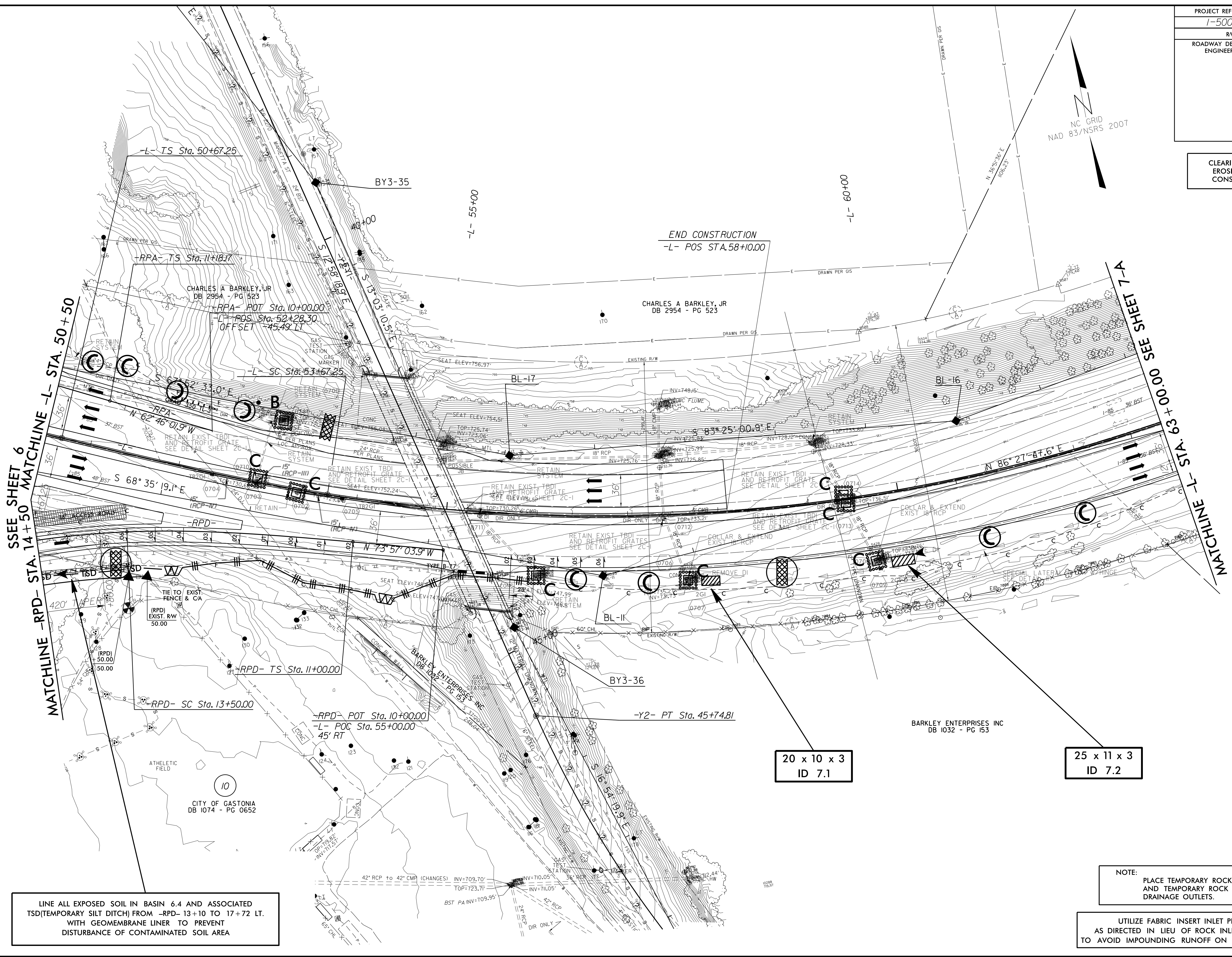


PROJECT REFERENCE NO. 1-5000	SHEET NO. EC-9/CONST.7
RW SHEET NO.	
ROADWAY DESIGN ENGINEER	HYDRAULICS ENGINEER

CLEARING AND GRUBBING  
EROSION CONTROL FOR  
CONSTRUCTION SHEET 7



SSEE SHEET 6  
MATCHLINE -L- STA. 50+50  
MATCHLINE -R- STA. 14+50

MATCHLINE -L- STA. 63+00.00  
SEE SHEET 7-A

LINE ALL EXPOSED SOIL IN BASIN 6.4 AND ASSOCIATED TSD (TEMPORARY SILT DITCH) FROM -R- STA. 13+10 TO 17+72 LT. WITH GEOMEMBRANE LINER TO PREVENT DISTURBANCE OF CONTAMINATED SOIL AREA

20 x 10 x 3  
ID 7.1

25 x 11 x 3  
ID 7.2

NOTE:  
PLACE TEMPORARY ROCK SEDIMENT DAMS TYPE - B AND TEMPORARY ROCK SILT CHECKS TYPE - A AT DRAINAGE OUTLETS.

UTILIZE FABRIC INSERT INLET PROTECTION DEVICE AS DIRECTED IN LIEU OF ROCK INLET SEDIMENT TRAP TYPE C TO AVOID IMPOUNDING RUNOFF ON ROADWAY OPEN TO PUBLIC

8/17/99  
15-MAR-2017 15:04  
P:\V\Projects\15000\1-5000-EC.dwg - psh07.dgn  
PLT: 2/6/2017 2:09:52