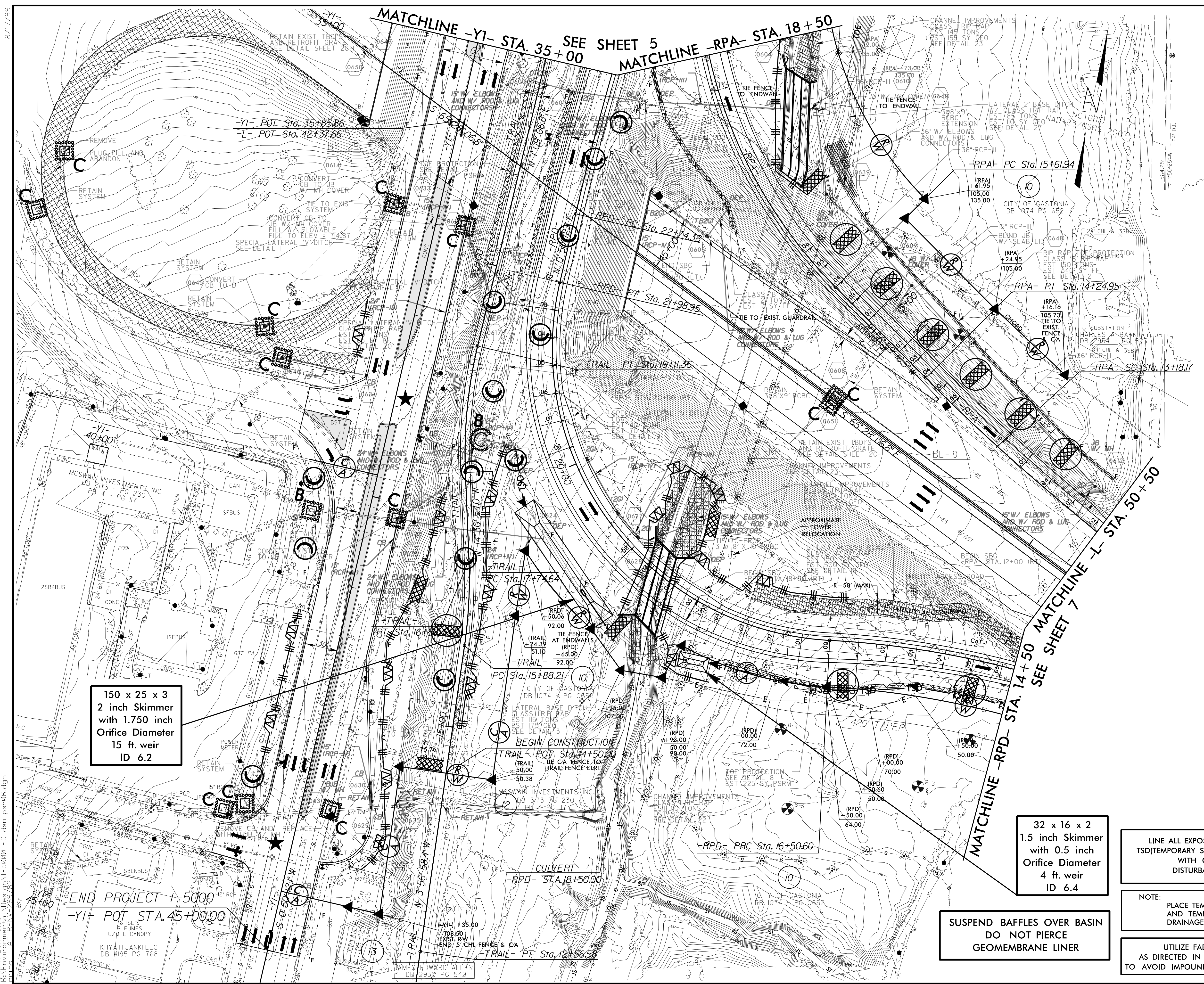


PROJECT REFERENCE NO.	SHEET NO.
I-5000	EC-6/CONST.6
RW SHEET NO.	
ROADWAY DESIGN ENGINEER	HYDRAULICS ENGINEER

CLEARING AND GRUBBING
EROSION CONTROL FOR
CONSTRUCTION SHEET 6



150 x 25 x 3
2 inch Skimmer
with 1.750 inch
Orifice Diameter
15 ft. weir
ID 6.2

32 x 16 x 2
1.5 inch Skimmer
with 0.5 inch
Orifice Diameter
4 ft. weir
ID 6.4

SUSPEND BAFFLES OVER BASIN
DO NOT PIERCE
GEOMEMBRANE LINER

LINE ALL EXPOSED SOIL IN BASIN 6.4 AND ASSOCIATED
TSD (TEMPORARY SILT DITCH) FROM -RPD- 13+10 TO 17+72 LT.
WITH GEOMEMBRANE LINER TO PREVENT
DISTURBANCE OF CONTAMINATED SOIL AREA

NOTE:
PLACE TEMPORARY ROCK SEDIMENT DAMS TYPE - B
AND TEMPORARY ROCK SILT CHECKS TYPE - A AT
DRAINAGE OUTLETS.

UTILIZE FABRIC INSERT INLET PROTECTION DEVICE
AS DIRECTED IN LIEU OF ROCK INLET SEDIMENT TRAP TYPE C
TO AVOID IMPOUNDING RUNOFF ON ROADWAY OPEN TO PUBLIC

8/17/99

I:\MAR-2011\5310\Desig\1-5000-EC.dwg - psh06.dgn
15-MAR-2011 15:30
P:\V\psh06.dgn
15-MAR-2011 15:30