

PROJECT REFERENCE NO. I-5000	SHEET NO. EC-5/CONST.5
RW SHEET NO.	HYDRAULICS ENGINEER
ROADWAY DESIGN ENGINEER	

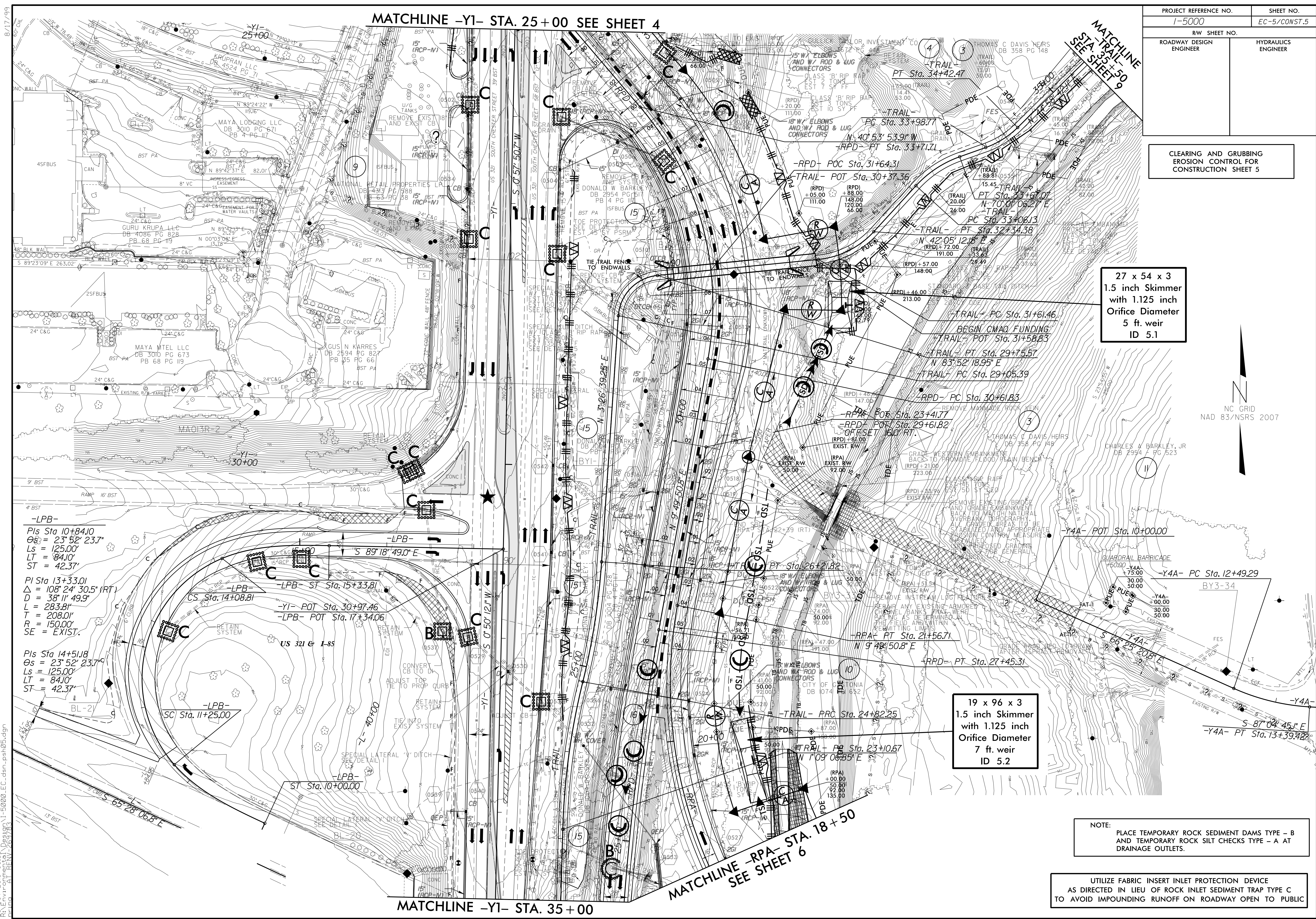
CLEARING AND GRUBBING  
EROSION CONTROL FOR  
CONSTRUCTION SHEET 5

27 x 54 x 3  
1.5 inch Skimmer  
with 1.125 inch  
Orifice Diameter  
5 ft. weir  
ID 5.1

19 x 96 x 3  
1.5 inch Skimmer  
with 1.125 inch  
Orifice Diameter  
7 ft. weir  
ID 5.2

NOTE:  
PLACE TEMPORARY ROCK SEDIMENT DAMS TYPE - B  
AND TEMPORARY ROCK SILT CHECKS TYPE - A AT  
DRAINAGE OUTLETS.

UTILIZE FABRIC INSERT INLET PROTECTION DEVICE  
AS DIRECTED IN LIEU OF ROCK INLET SEDIMENT TRAP TYPE C  
TO AVOID IMPOUNDING RUNOFF ON ROADWAY OPEN TO PUBLIC



MATCHLINE -Y1- STA. 25+00 SEE SHEET 4

MATCHLINE  
STA. 35+50  
SEE SHEET 9

MATCHLINE -Y1- STA. 35+00

MATCHLINE -RPA- STA. 18+50  
SEE SHEET 6

8/17/99  
 28-OCT-2016 09:53 Designer: I-5000-EC.dwg psh05.dgn  
 269783