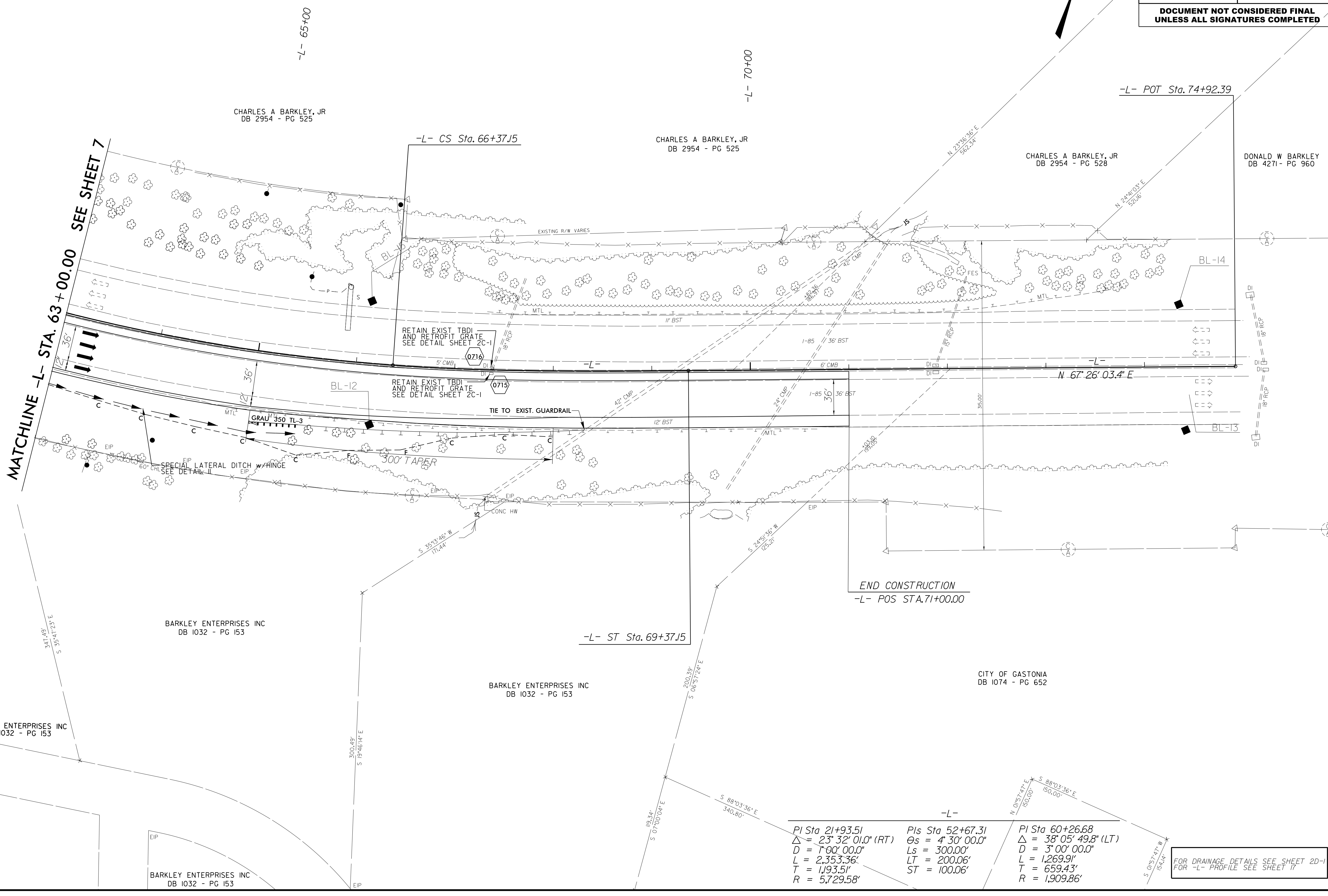
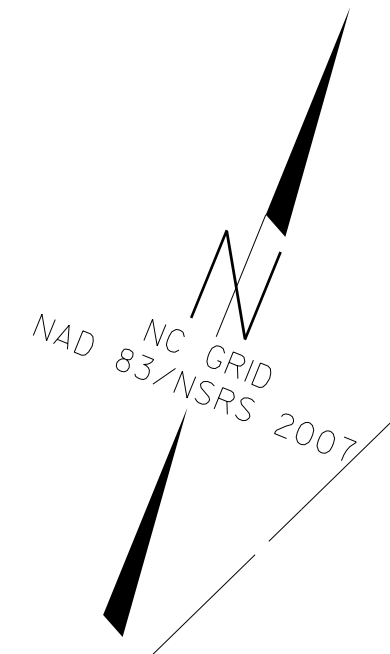


PROJECT REFERENCE NO. I-5000	SHEET NO. 7-A
RW SHEET NO.	
ROADWAY DESIGN ENGINEER	HYDRAULICS ENGINEER
DOCUMENT NOT CONSIDERED FINAL UNLESS ALL SIGNATURES COMPLETED	



PI Sta 21+93.51 $\Delta = 23^\circ 32' 01.0''$ (RT) $D = 1,600.00'$ $L = 2,353.36'$ $T = 1,193.51'$ $R = 5,729.58'$	PIs Sta 52+67.31 $\Delta = 4^\circ 30' 00.0''$ $D = 300.00'$ $L = 200.06'$ $ST = 100.06'$	PI Sta 60+26.68 $\Delta = 38^\circ 05' 49.8''$ (LT) $D = 3,000.00'$ $L = 1,269.91'$ $T = 659.43'$ $R = 1,909.86'$
--	---	--

FOR DRAINAGE DETAILS SEE SHEET 2D-1  
FOR -L- PROFILE SEE SHEET 7

REVISIONS

8/17/99  
 19-JAN-2017 16:39  
 I:\5000\I-5000-Rdy\dsm-psht07a.dgn  
 3:58:50 PM