

09/08/99

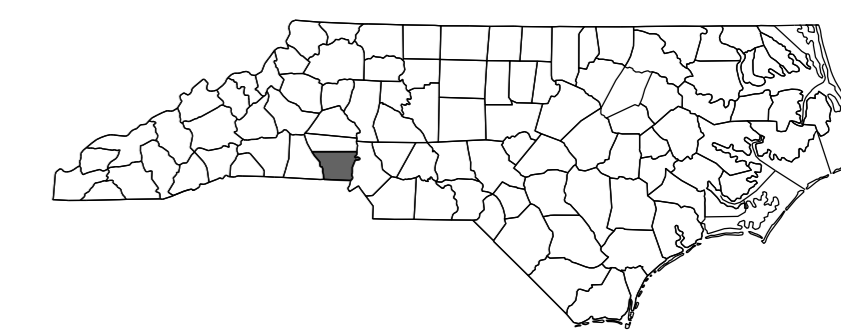
See Sheet 1A For Index of Sheets

# STATE OF NORTH CAROLINA DIVISION OF HIGHWAYS

## GASTON COUNTY

**LOCATION: I-85/US 321 GEOMETRIC SAFETY IMPROVEMENTS  
TO INTERCHANGE**  
**TYPE OF WORK: GRADING, DRAINAGE, PAVING,  
CULVERTS, LIGHTING, AND SIGNALS**

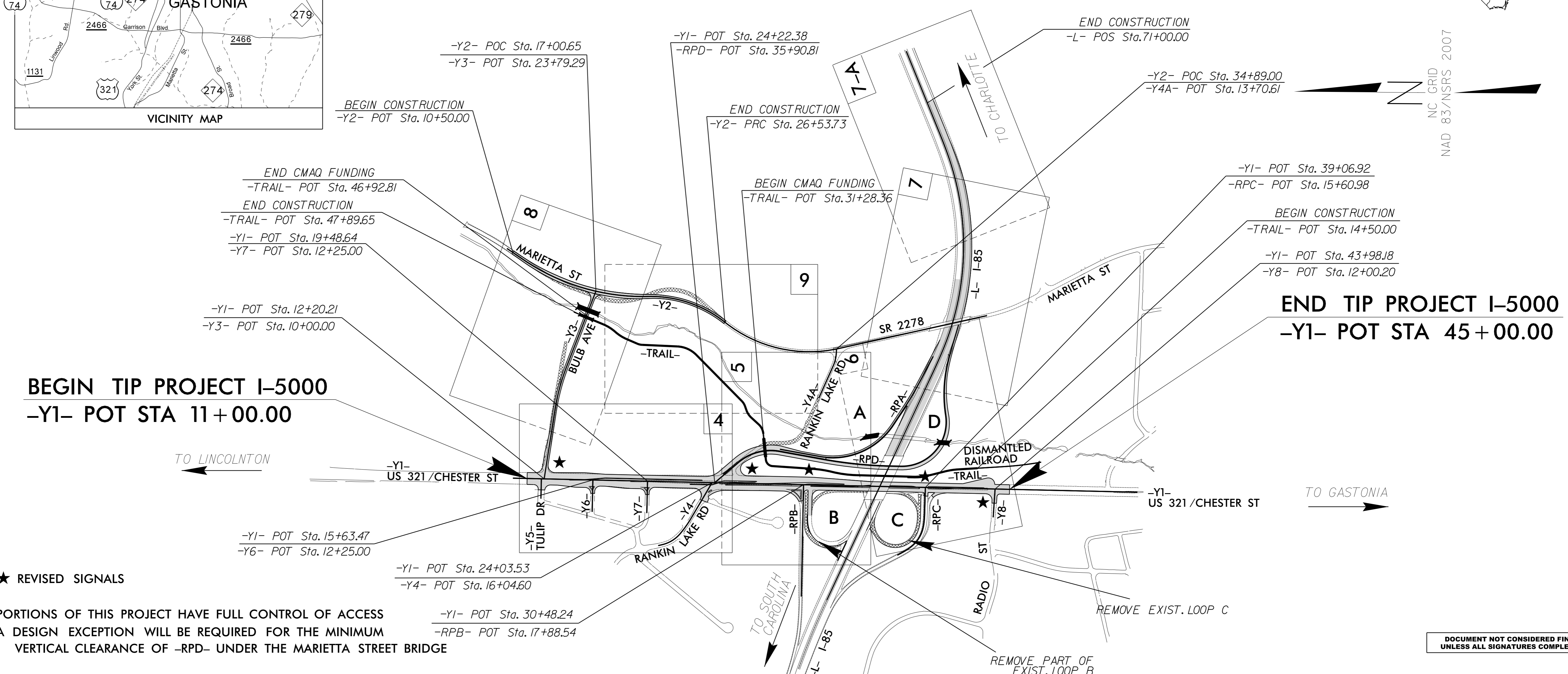
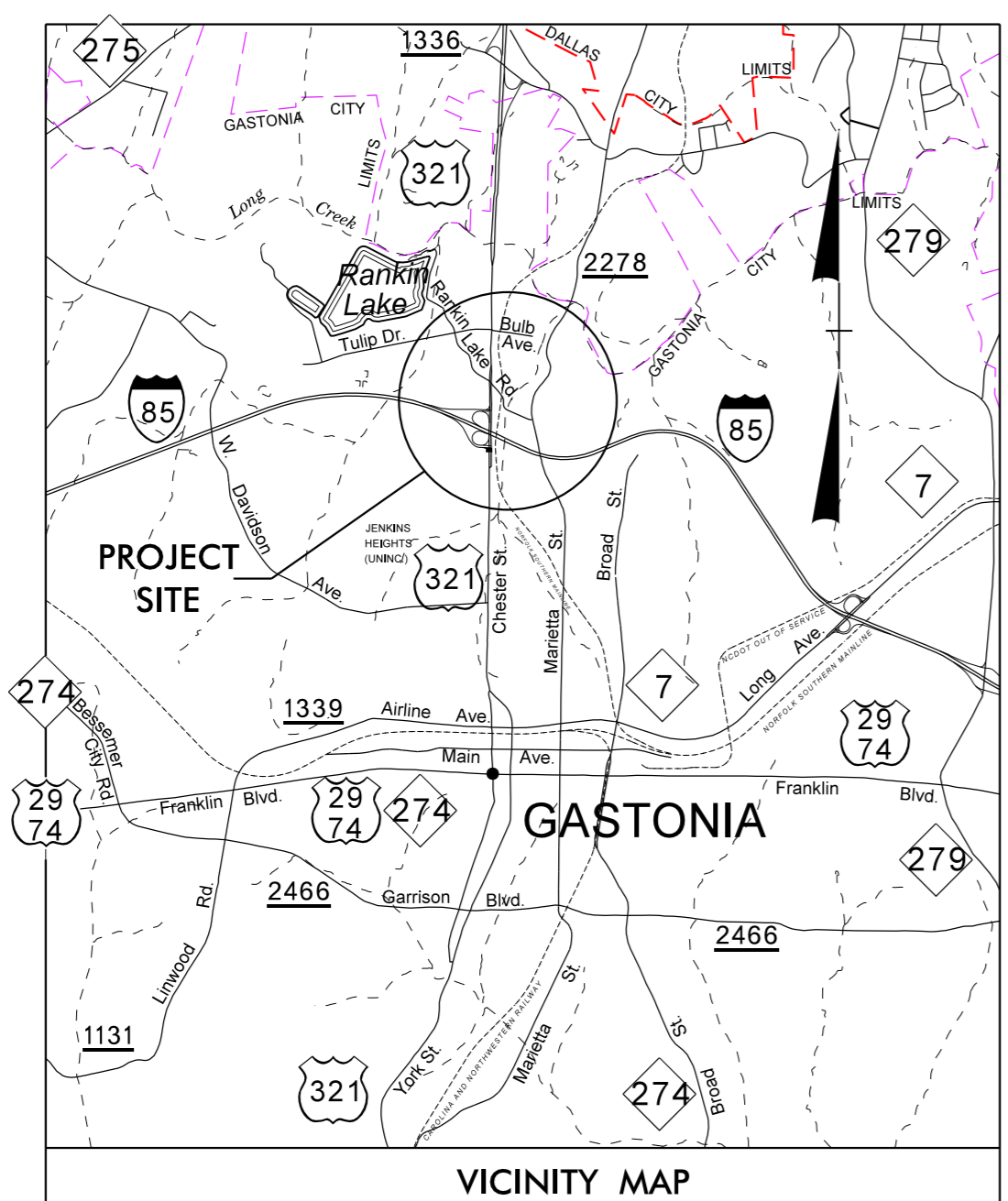
STATE	STATE PROJECT REFERENCE NO.	SHEET NO.	TOTAL SHEETS
N.C.	I-5000	1	
STATE PROJ. NO.	F.A. PROJ. NO.	DESCRIPTION	
41153.1.1	IMF-85-1(113)17	PE	
41153.2.FS1	IMF-85-1(113)17	RW	
41153.2.FSU1	IMF-85-1(113)17	UTIL.	
41153.3.1	IMF-085-1(113)17	CONST.	



NC GRID  
NAD 83/NSRS 2007

**TIP PROJECT: I-5000**

**CONTRACT: C203846**

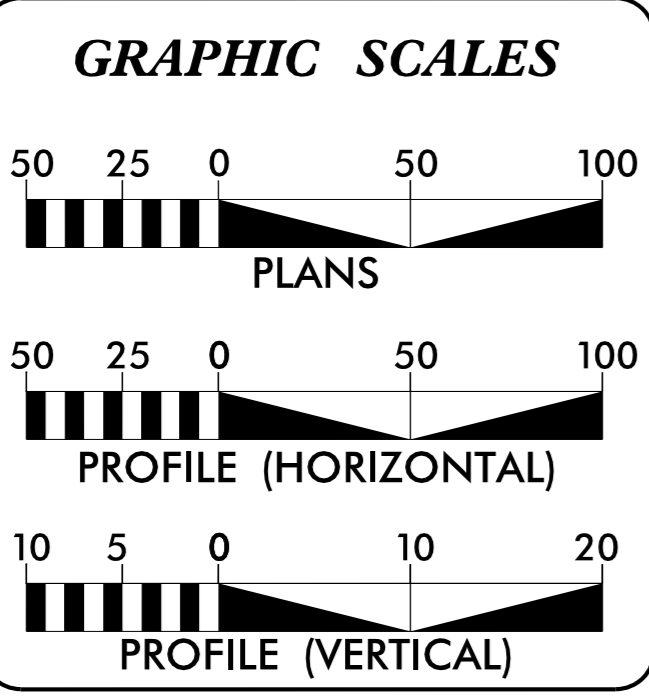


**BEGIN TIP PROJECT I-5000**  
-Y1- POT STA 11+00.00

**END TIP PROJECT I-5000**  
-Y1- POT STA 45+00.00

★ REVISED SIGNALS

PORTIONS OF THIS PROJECT HAVE FULL CONTROL OF ACCESS  
A DESIGN EXCEPTION WILL BE REQUIRED FOR THE MINIMUM  
VERTICAL CLEARANCE OF -RPD- UNDER THE MARIETTA STREET BRIDGE



**DESIGN DATA**

ADT 2017 =	49,516
ADT 2037 =	63,676
K =	8 %
D =	55 %
T =	9 % *
V =	50 MPH
* TTST =	7 DUAL = 2
FUNC CLASS =	PRINCIPAL ARTERIAL REGIONAL TIER

**PROJECT LENGTH**

LENGTH ROADWAY TIP PROJECT I-5000 =	0.644 MILES
TOTAL LENGTH TIP PROJECT I-5000 =	0.644 MILES

Prepared in the Office of:  
**DIVISION OF HIGHWAYS**  
1000 Birch Ridge Dr., Raleigh NC, 27610

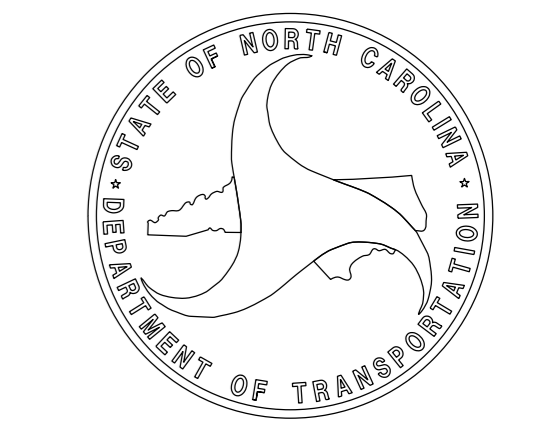
2012 STANDARD SPECIFICATIONS	
<b>RIGHT OF WAY DATE:</b> AUGUST 21, 2015	<b>GARY LOVERING, PE</b> PROJECT ENGINEER
<b>LETTING DATE:</b> April 18, 2017	<b>BRYAN KEY, PE</b> PROJECT DESIGN ENGINEER

**HYDRAULICS ENGINEER**

DocuSigned by:  
*Larry D. Robinson*  
CE1176291105643E...  
3/3/2017  
SIGNATURE: P.E.

**ROADWAY DESIGN ENGINEER**

DocuSigned by:  
*Bryan Key*  
329038A9AF124FC...  
3/3/2017  
SIGNATURE: P.E.



19-JAN-2017 11:46  
R:\Roadway\Proj\I-5000\_Rdy\_tsh.dgn  
\$\$\$\$\$USERNAME\$\$\$\$\$

DOCUMENT NOT CONSIDERED FINAL  
UNLESS ALL SIGNATURES COMPLETED